

# Adaptive Vaccination Solutions

BROUGHT TO YOU BY SANOFI PASTEUR

COVID-19 has changed routine immunization practices but has not changed the importance of disease prevention. As a worldwide organization and leader rooted in innovation and devoted entirely to human vaccines, we've developed Adaptive Vaccination Solutions to help you continue providing your patients with the protection they need.

This comprehensive guidebook provides guidance and support for administering vaccines and communicating the importance of vaccination.

Here's a look at the tools that can help achieve immunization success for you and your practice.

NEW

## Routine and COVID-19 Immunization Guidance

Clinical considerations, strategies, and links for routine immunization practices in conjunction with COVID-19 vaccine administration



### Routine Immunization Planning and Considerations

COVID-19 vaccine options are currently authorized for use in patients under the Emergency Use Authorizations.<sup>1</sup> Additionally, every patient visit can be treated as an opportunity to administer routine vaccinations. Here are some things to consider when planning to administer:

- 1 Prioritizing COVID-19 vaccinations is important, and it is equally important to prioritize routine immunization within the office and with patients. Ensuring that immunization services are maintained or reinstated is essential for protecting individuals and communities from vaccine-preventable diseases.<sup>2</sup>
- 2 When planning routine immunizations for your patients, it is important to consider any administration restrictions and potential scheduling accommodations, such as those on the next page.

SANOFI PASTEUR

## ROUTINE AND COVID-19 VACCINE GUIDANCE

COVID-19 vaccination may pose a challenge to “keeping on schedule” with complex vaccination timing guidelines. This guide provides information and tips for:

- Administering routine immunizations to patients also eligible for the COVID-19 vaccine
- How to create a vaccination schedule for both COVID-19 and routine immunizations

### One-Stop Shot Walk-Thru Immunization Clinic

With the ongoing COVID-19 pandemic, it's more important than ever to help protect patients against diseases that we currently have vaccines for. It's important to remind them that they should adhere to the CDC immunization schedule for their age group, as vaccination is one of the best ways to help protect themselves. In these uncertain times, patients may have hesitations around in-office visits, but immunization is paramount.

**SOLUTION:** Hold a walk-thru immunization clinic so you can provide patients with the opportunity to get CDC-recommended vaccinations while adhering to the recommended physical distancing and congregation guidelines, ensuring separation between sick and healthy patients, and helping to limit traffic flow through your office.



Here you will find general planning tips, logistical considerations, and a clinic site blueprint and patient flow map.

We've broken it down into step-by-step instructions for 3 phases:

- 1 **PLAN**  
Making the Appointment
- 2 **PREPARE**  
Getting Ready for the Appointment
- 3 **PERFORM**  
During the Appointment

#### Planning Tips

**Know the Flow** Have a plan in place to maintain traffic flow, from entrance to exit

**Have the Right Tools** Use the materials checklist provided as a starting point to ensure you have all the items needed to run the clinic

**Patient Proof** Provide documentation of vaccine administration to all recipients at time of vaccination

**Have a Backup Plan** Ensure backup plans are in place in case of late arrivals or delays

Additional resources provided



## PATIENT SAFETY IN CLINIC SETTINGS

To help ensure a safe, comfortable environment for patients, this guide provides in-depth logistical guidance for running:

- Walk-thru immunization clinics
- Drive-thru immunization clinics

SANOFI PASTEUR

## PATIENT OUTREACH COMMUNICATIONS

From clinic announcements to reassuring messages about office cleaning procedures, here's a variety of communication templates for staying in contact with your patients, including:

- WellConnect® recall system and examples of phone and text scripts
- Communication templates for phone, text, and email



## TELEHEALTH GUIDANCE

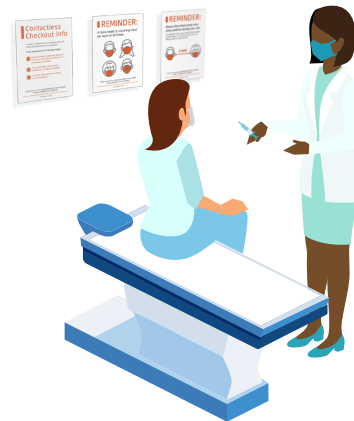
Telehealth is taking a larger role in patient care, and this guide provides helpful tips on continuing care after the appointment ends, such as:

- Talking to patients about vaccination
- How to turn calls into vaccination appointments

## OFFICE SIGNAGE

A collection of helpful signs for your office during the COVID-19 pandemic, including:

- Directional signage
- Sick and well waiting area signage
- Informational posters on differences between common conditions and COVID-19 symptoms



## FURTHER YOUR PRACTICE IMMUNIZATION GOALS

Reach out to your Sanofi Pasteur representative or call 1-800-VACCINE (1-800-822-2463) today and ask about how these guides can be an invaluable resource for you and your practice. **Additionally, you can download these materials by visiting [VaccineShoppe.com](https://www.vaccineshoppe.com)®.**

