

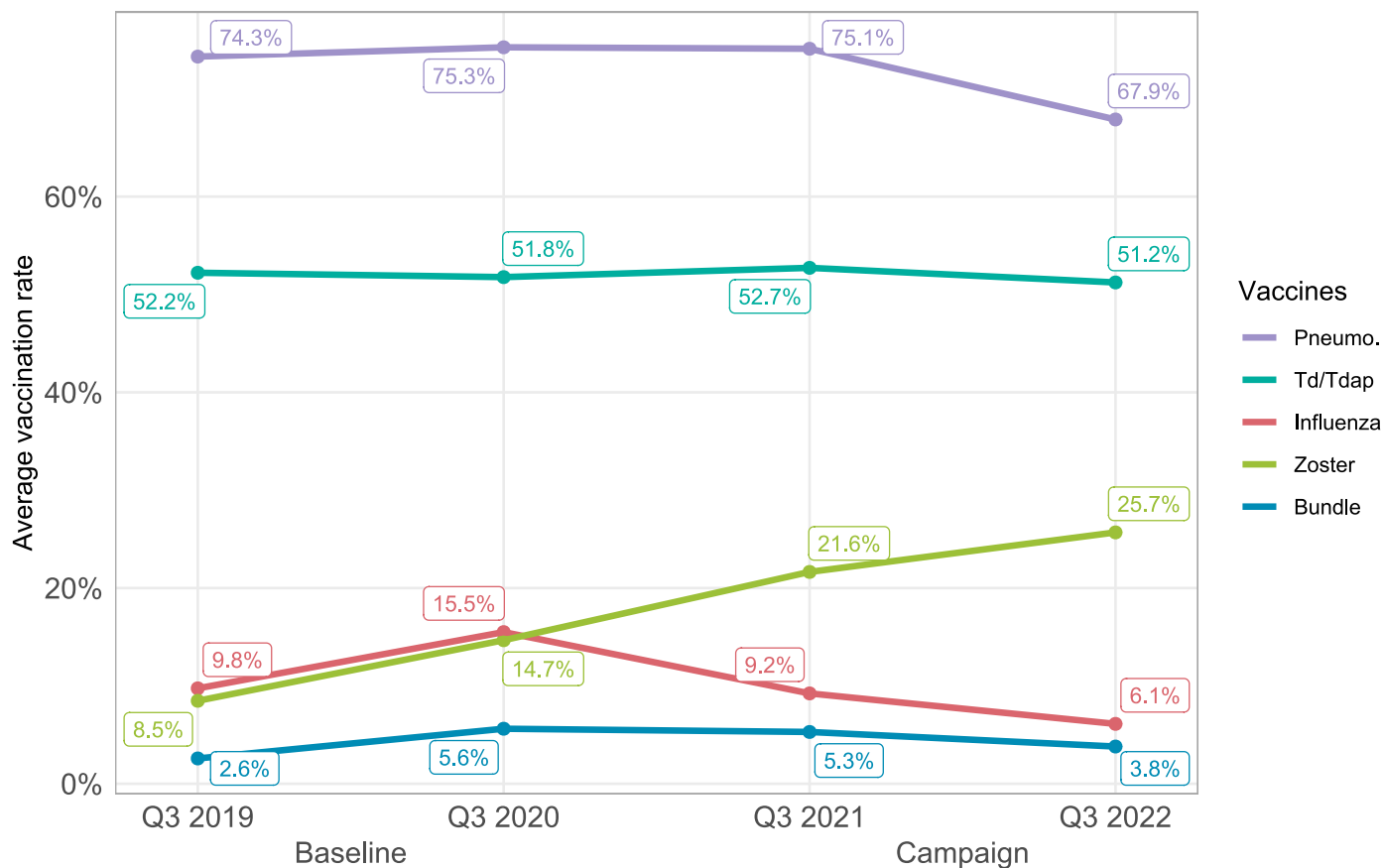
# Rise to Immunize™

## Blinded Comparative Report

November 29, 2022

### Average of vaccination rates across all organizations, year-over-year

Cumulative Measurement Year (MY) rates as of Q3 (the most recent RQ)



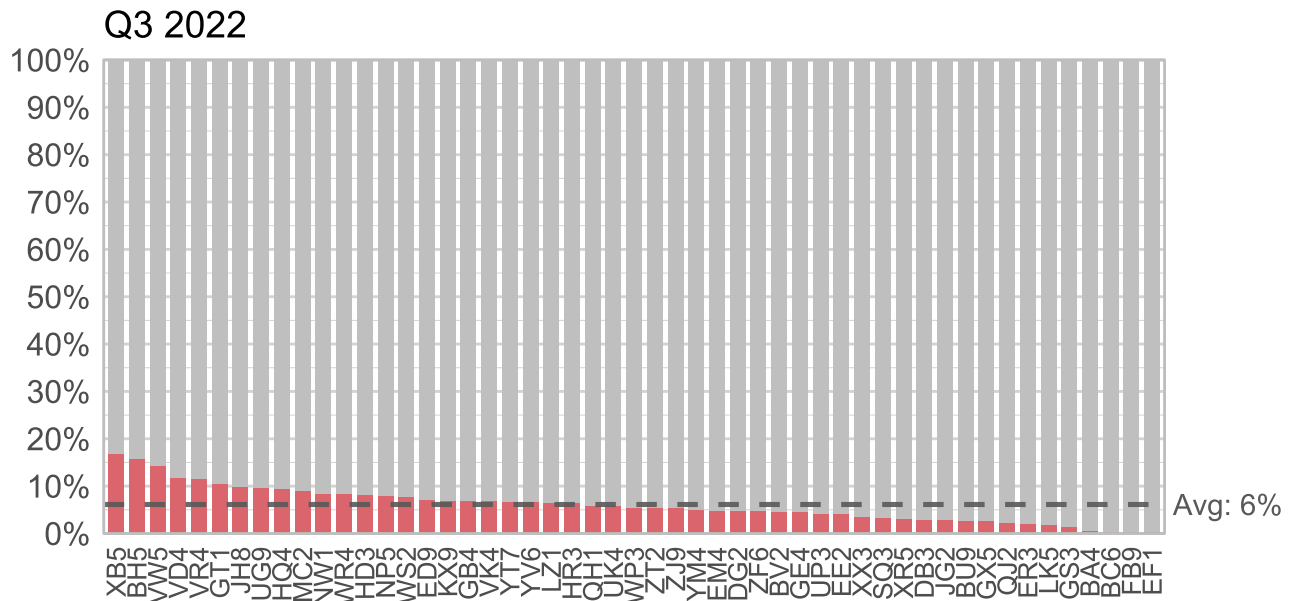
This plot compares the average rates of all Q3s in the campaign so far, including Q3 2022 (the most recent reporting quarter).

- The pneumococcal vaccination rate decreased by 7.2% on average this year (Q3 2022) compared to last year (Q3 2021), but this was expected due to the measure changes.
- Td/Tdap vaccination rates decreased by 1.5%.
- Both influenza and Bundle rates decreased from this year compared to last year, by 3.1% and 1.5%, respectively.
- Zoster vaccination rates increased by 4.1%. This is a slower increase than was observed in past years (e.g., from Q3 2020 to Q4 2021, zoster vaccination rates increased by 6.9%).

# Influenza (M1)

## Intervention

Measurement Year 2022



Q3 influenza vaccination rates are lower this year on average compared to past Q3s (2019, 2020, and 2021). However, it is difficult to draw conclusions from Q3 influenza vaccination data, since the vast majority of influenza vaccinations in a Measurement Year are administered in later quarters. As we progress into through this Measurement Year, we'll see if the downward trend continues.

Top 5 Highest Influenza Vaccination Rates in Q3 2022		
Org	Rank	Rate
XB5	1	16.8%
BH5	2	15.8%
VW5	3	14.4%
VD4	4	11.9%
VR4	5	11.5%

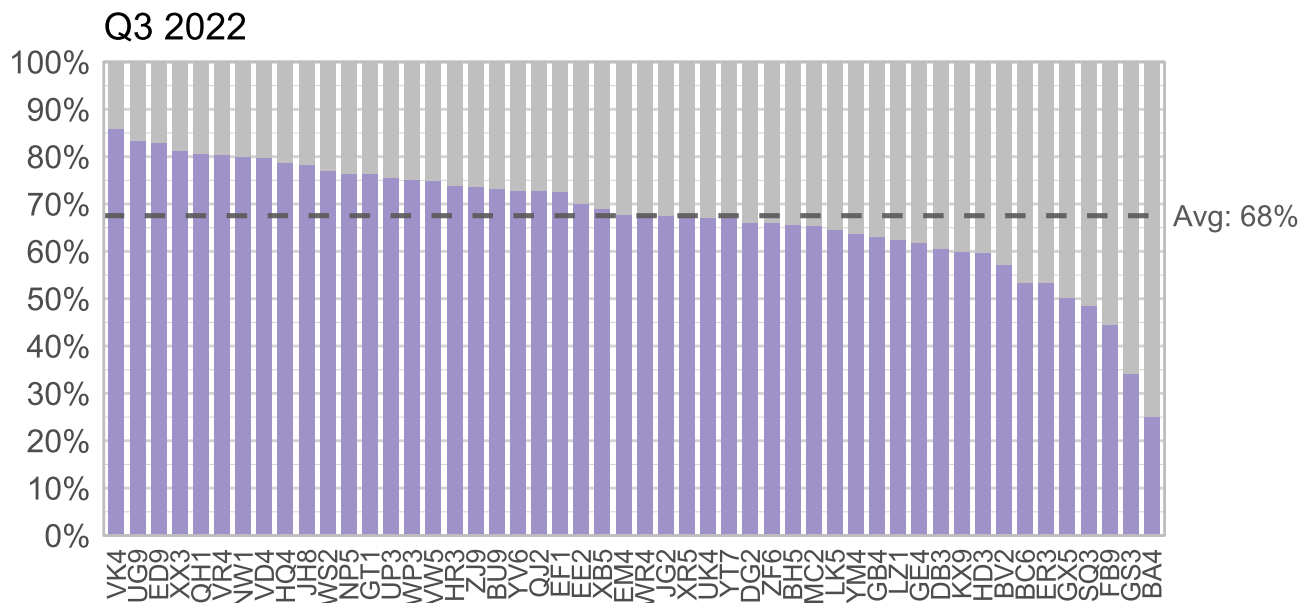
### Top 5 Highest Vaccination Rates

- Congratulations to the 5 organizations with the highest influenza vaccination rates in Q3 2022! XB5, BH5, VW5, VD4, and VR4 have started Measurement Year 2022 off strong!

## Pneumococcal (M2)

### Intervention

### Measurement Year 2022



The new pneumococcal measure has arrived! We are now measuring the proportion of patients who received a pneumococcal **conjugate** vaccine, instead of any pneumococcal vaccine. The average across all groups is now 68%, a 7.2% drop from the average of last year. The drop in average was expected given the narrower measure criteria.

We are excited to see the progression of this measure over time as organizations adapt to the new CDC guidelines!

Top 5 Highest Pneumo. Vaccination Rates in Q3 2022		
Org	Rank	Rate
VK4	1	85.9%
UG9	2	83.4%
ED9	3	83.0%
XX3	4	81.4%
QH1	5	80.7%

### Top 5 Highest Vaccination Rates

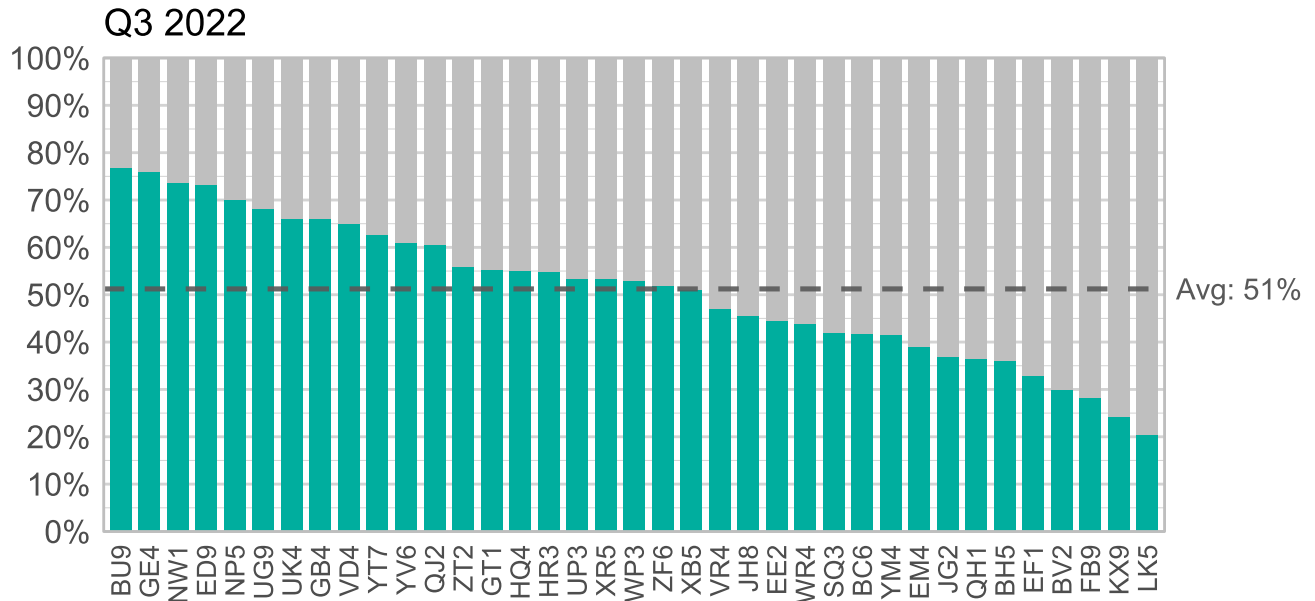
- Congratulations to the organizations with the top 5 highest pneumococcal vaccination rates, VK4, UG9, ED9, XX3, and QH1! These organizations have rapidly adapted to the new guidelines.

# Td/Tdap (M3)

## Intervention

Measurement Year 2021 (All 4 quarters reported)

Measurement Year 2022



The overall average of Td/Tdap vaccination rates decreased by 1% this Q3 compared to last Q3. There continues to be a wide range of rates between organizations (20-76%)!

Top 5 Highest Td/Tdap Vaccination Rates in Q3 2022		
Org	Rank	Rate
BU9	1	76.9%
GE4	2	76.0%
NW1	3	73.7%
ED9	4	73.3%
NP5	5	70.0%

Top 5 Most Improved Orgs by Rank	
# of spots moved from Q3 2021 to Q3 2022	
Org	Increase in Rank
ZT2	6
WP3	4
UP3	3
BC6	3
GB4	2

Top 5 Orgs with Largest Increase (or Smallest Decrease) in Rate	
Change from Q3 2021 to Q3 2022	
Org	Change in Rate
BC6	5.8%
LK5	4.2%
GB4	3.9%
ZT2	3.6%
QH1	2.6%

### Top 5 Highest Vaccination Rates

- Congratulations to the 5 organizations with the highest Td/Tdap vaccination rates in Q3 2022! BU9 remains the top performer. NP5 has joined the top 5, while GE4, NW1, and ED9 make their return.

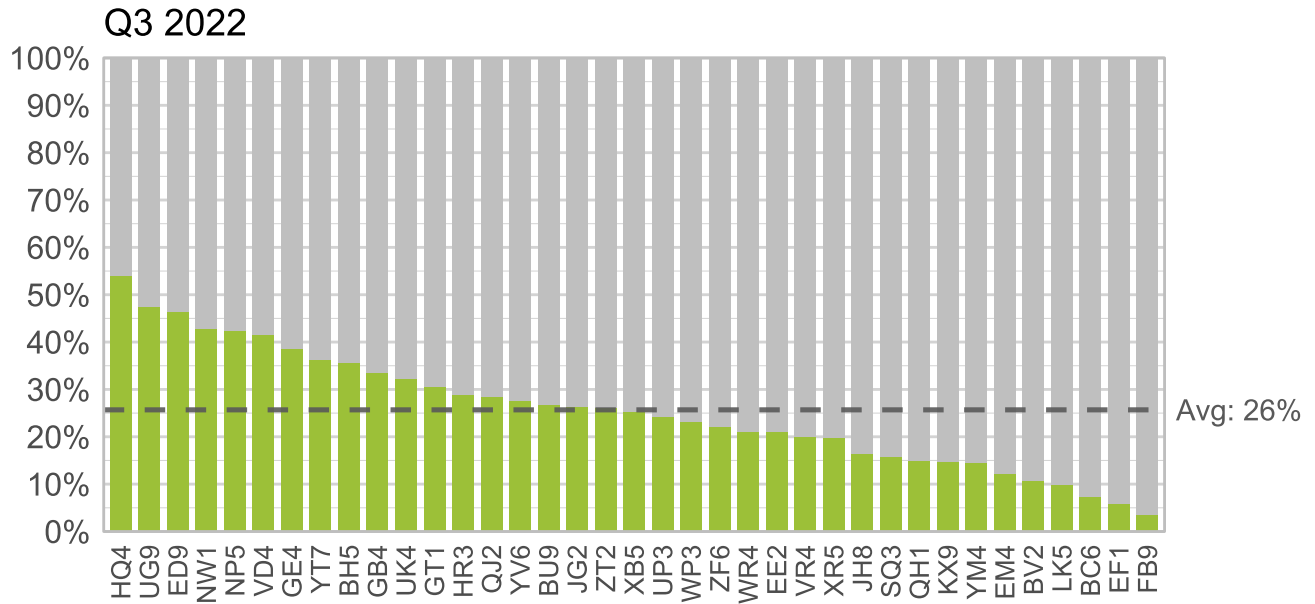
### Top 5 Most Improved Orgs by Rank

- Congratulations to the 5 organizations whose rank increased the most from Q3 2021 to Q3 2022! ZT2 continues to rise in the ranks, with WP3, UP3 and BC6 close behind.

# Zoster (M4)

## Intervention

Measurement Year 2022



Zoster vaccination rates continue to rise! The Q3 2022 average rate (25.4%) is 4.6% higher than last year's Q3 rate of 20.8%.

Top 5 Highest Zoster Vaccination Rates in Q3 2022		
Org	Rank	Rate
HQ4	1	54.0%
UG9	2	47.6%
ED9	3	46.5%
NW1	4	42.9%
NP5	5	42.5%

Top 5 Most Improved Orgs by Rank	
# of spots moved from Q3 2021 to Q3 2022	
Org	Increase in Rank
UG9	5
JG2	5
GB4	2
WP3	2
WR4	2

Top 5 Orgs with Largest Increase (or Smallest Decrease) in Rate	
Change from Q3 2021 to Q3 2022	
Org	Change in Rate
UG9	14.7%
GB4	9.5%
JG2	8.8%
NP5	8.8%
UK4	8.1%

### Top 5 Highest Vaccination Rates

- Congratulations to the 5 organizations with the highest zoster vaccination rates in Q3 2022! HQ4 is leading the pack. UG9, ED9, NW1, and NP5 remain in the top 5 from last quarter.

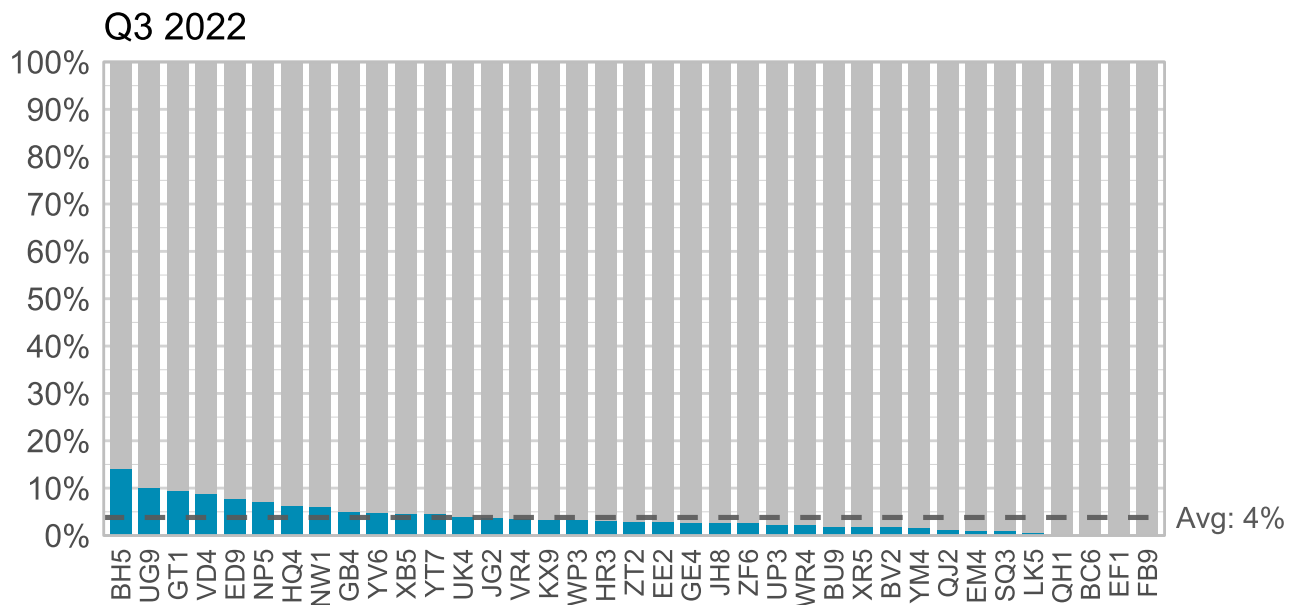
### Top 5 Most Improved Orgs by Rank

- UG9 has climbed 5 spots to the top, improving their rate by 14.7%. JG2 continues it's improvement, also moving up 5 spots with an improvement of 8.8% compared to last year.

## Bundle (M5)

### Intervention

Measurement Year 2022



Bundle rates were 4% this quarter on average. We expect a rapid rise in Bundle rates next quarter as organizations document Q4 influenza vaccinations.

#### Top 5 Highest Bundle Vaccination Rates in Q3 2022

Org	Rank	Rate
BH5	1	14.1%
UG9	2	10.1%
GT1	3	9.4%
VD4	4	8.8%
ED9	5	7.8%

#### Top 5 Highest Vaccination Rates

- Congratulations to the 5 organizations with the highest Bundle vaccination rates in Q3 2022! BH5, UG9, GT1, VD4, and ED9 will look to continue their momentum into the next quarter as flu shots ramp up.

# Performance Summary

## Q3 2022: Summary Statistics

Vaccine	Average	SD	Min	25th pctl	Median	75th pctl	Max
Influenza	6.1%	3.8%	0.5%	3.3%	5.5%	8.2%	16.8%
Pneumo.	67.9%	12.4%	25.1%	62.7%	67.8%	76.4%	85.9%
Td/Tdap	51.2%	15.0%	20.4%	41.6%	53.1%	62.8%	76.9%
Zoster	25.7%	12.5%	3.5%	15.8%	25.4%	33.6%	54.0%
Bundle	3.8%	3.2%	0.0%	1.9%	3.0%	4.8%	14.1%

## Q3 2022: All Organizations

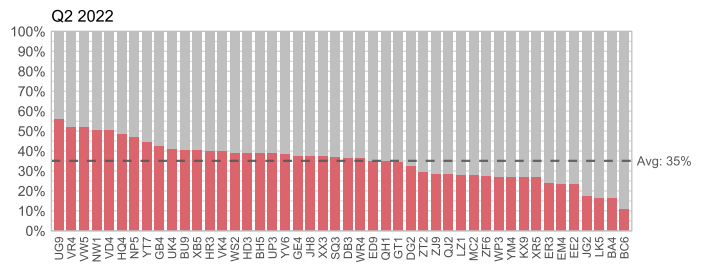
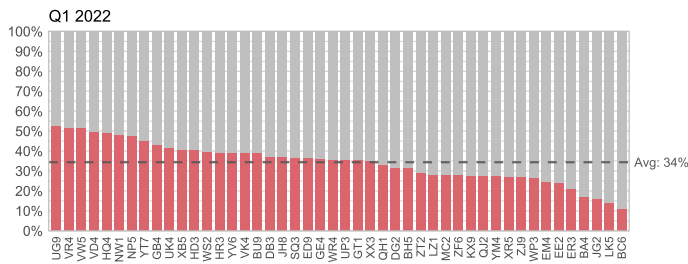
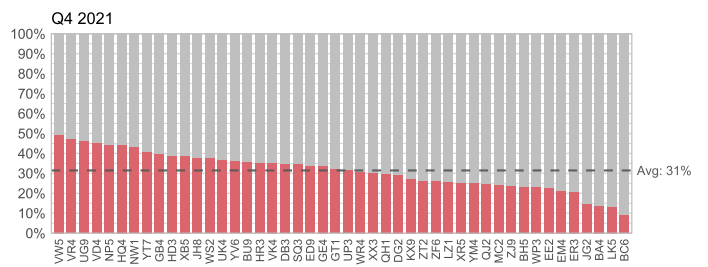
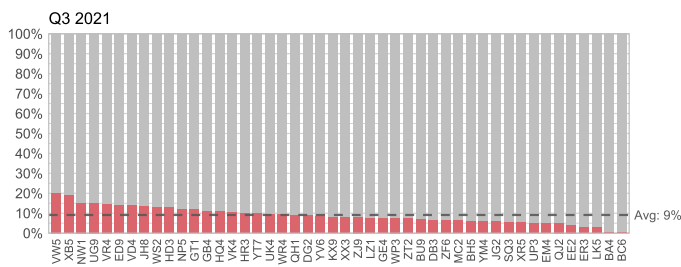
Org	Track	Influenza	Pneumo.	Td/Tdap	Zoster	Bundle
BA4	Basic	0.6%	25.1%	-	-	-
DB3	Basic	3.0%	60.6%	-	-	-
DG2	Basic	4.9%	66.2%	-	-	-
ER3	Basic	2.1%	53.4%	-	-	-
GS3	Basic	1.5%	34.1%	-	-	-
GX5	Basic	2.7%	50.2%	-	-	-
HD3	Basic	8.3%	59.8%	-	-	-
LZ1	Basic	6.5%	62.4%	-	-	-
MC2	Basic	9.1%	65.4%	-	-	-
VK4	Basic	6.9%	85.9%	-	-	-
VW5	Basic	14.4%	75.0%	-	-	-
WS2	Basic	7.9%	77.1%	-	-	-
XX3	Basic	3.6%	81.4%	-	-	-
ZJ9	Basic	5.4%	73.6%	-	-	-
BC6	Core	0.5%	53.5%	41.9%	7.4%	0.1%
BH5	Core	15.8%	65.6%	36.0%	35.6%	14.1%
BU9	Core	2.8%	73.3%	76.9%	26.8%	1.9%
BV2	Core	4.7%	57.2%	29.9%	10.8%	1.9%
ED9	Core	7.2%	83.0%	73.3%	46.5%	7.8%
EE2	Core	4.3%	70.1%	44.5%	21.1%	2.9%
EF1	Core	0.5%	72.7%	33.0%	6.0%	0.1%
EM4	Core	4.9%	67.8%	39.0%	12.3%	1.0%
FB9	Core	0.5%	44.5%	28.3%	3.5%	0.0%
GB4	Core	6.9%	63.1%	66.0%	33.6%	5.1%
GE4	Core	4.6%	61.8%	76.0%	38.6%	2.8%
GT1	Core	10.6%	76.4%	55.3%	30.6%	9.4%
HQ4	Core	9.5%	78.7%	55.2%	54.0%	6.4%
HR3	Core	6.5%	74.0%	54.9%	28.9%	3.2%
JG2	Core	3.0%	67.6%	36.9%	26.4%	3.8%
JH8	Core	10.0%	78.4%	45.7%	16.4%	2.8%

Org	Track	Influenza	Pneumo.	Td/Tdap	Zoster	Bundle
KX9	Core	6.9%	60.0%	24.3%	14.7%	3.4%
LK5	Core	1.9%	64.7%	20.4%	9.9%	0.6%
NP5	Core	8.1%	76.4%	70.0%	42.5%	7.1%
NW1	Core	8.4%	80.1%	73.7%	42.9%	6.1%
QH1	Core	5.9%	80.7%	36.6%	15.0%	0.1%
QJ2	Core	2.3%	72.9%	60.7%	28.6%	1.3%
SQ3	Core	3.4%	48.6%	42.1%	15.8%	1.0%
UG9	Core	9.6%	83.4%	68.1%	47.6%	10.1%
UK4	Core	5.8%	67.2%	66.1%	32.3%	3.9%
UP3	Core	4.3%	75.5%	53.5%	24.3%	2.4%
VD4	Core	11.9%	79.8%	65.1%	41.6%	8.8%
VR4	Core	11.5%	80.5%	47.1%	20.1%	3.5%
WP3	Core	5.5%	75.2%	53.1%	23.3%	3.3%
WR4	Core	8.4%	67.6%	44.0%	21.2%	2.3%
XB5	Core	16.8%	69.0%	51.1%	25.4%	4.7%
XR5	Core	3.2%	67.4%	53.4%	19.9%	1.9%
YM4	Core	5.1%	63.7%	41.6%	14.5%	1.7%
YT7	Core	6.8%	67.1%	62.8%	36.4%	4.7%
YV6	Core	6.7%	72.9%	61.1%	27.6%	4.8%
ZF6	Core	4.9%	66.2%	51.9%	22.2%	2.8%
ZT2	Core	5.5%	85.1%	55.9%	26.1%	3.0%

## Past Data

### Influenza (M1)

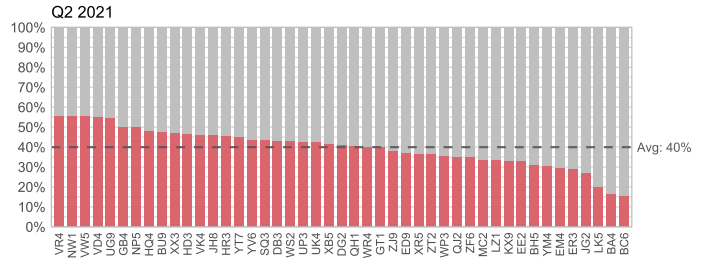
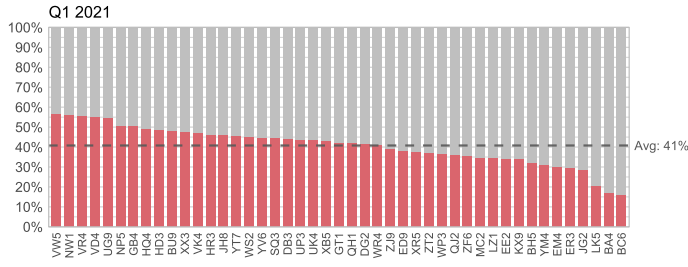
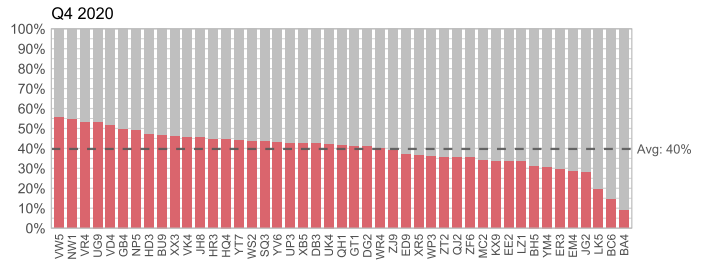
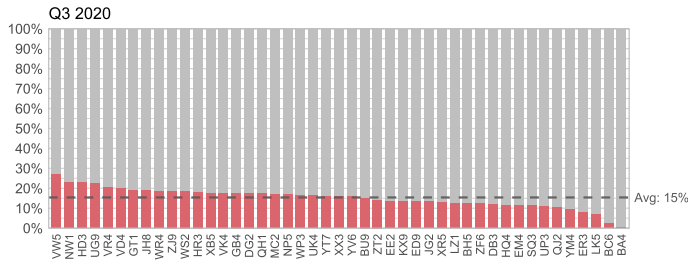
#### Measurement Year 2021



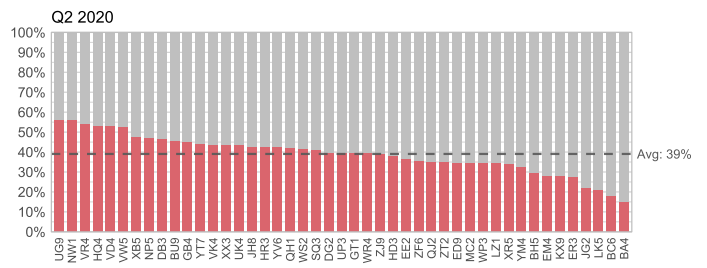
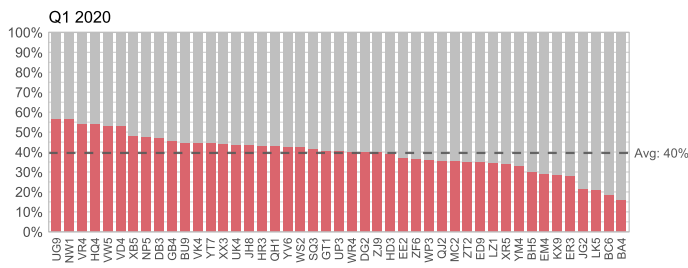
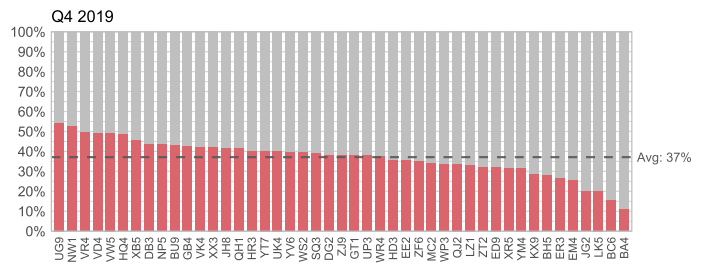
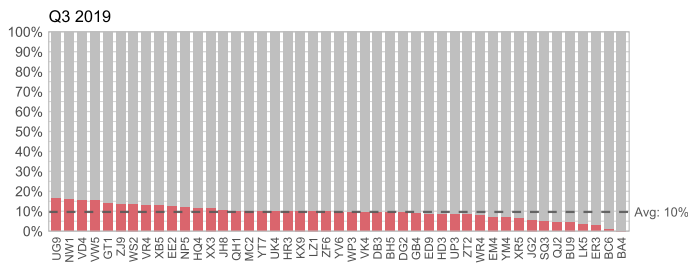


# Baseline

## Measurement Year 2020 (Intra-COVID)

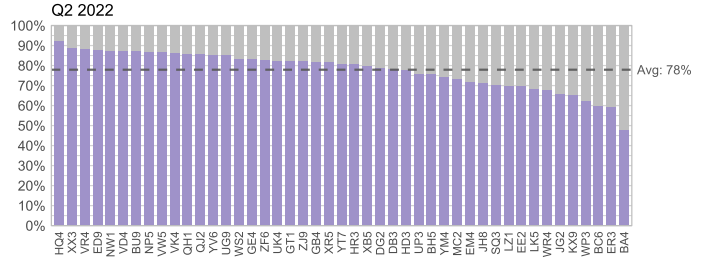
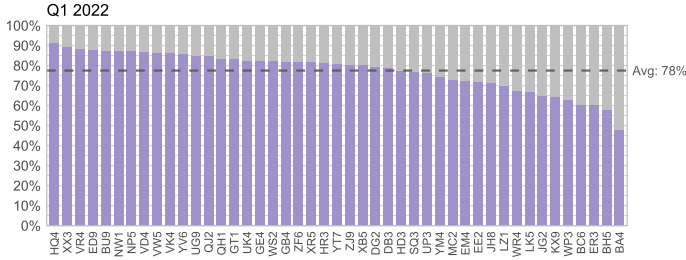
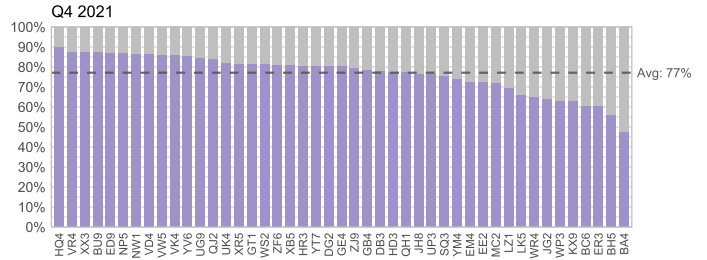
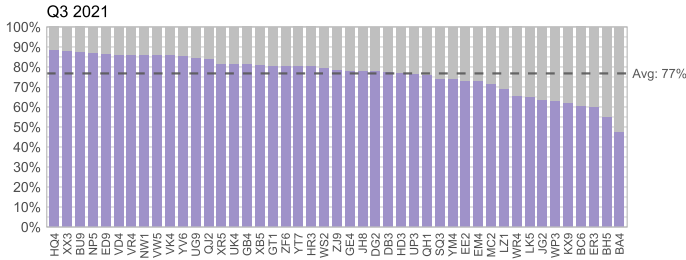


## Measurement Year 2019 (Pre-COVID)



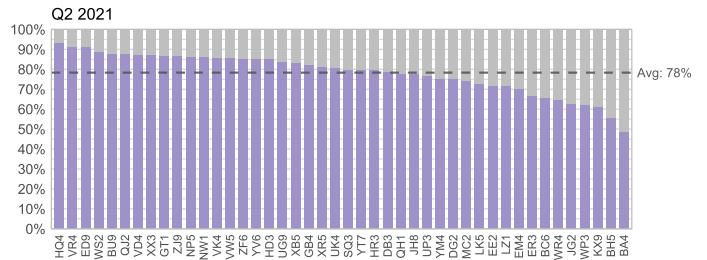
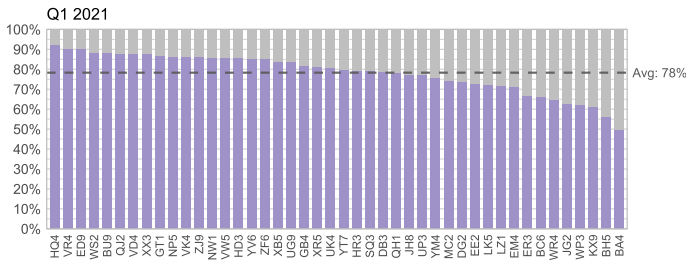
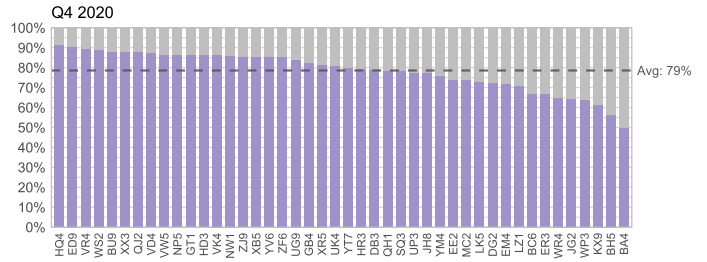
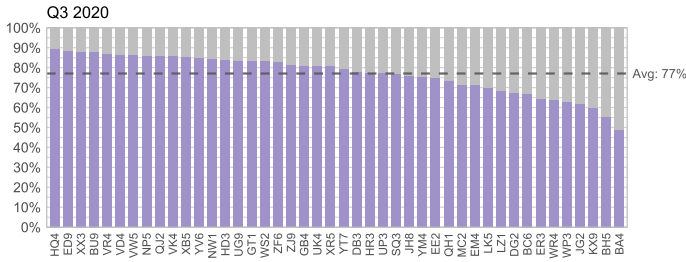
# Pneumococcal (M2)

## Measurement Year 2021

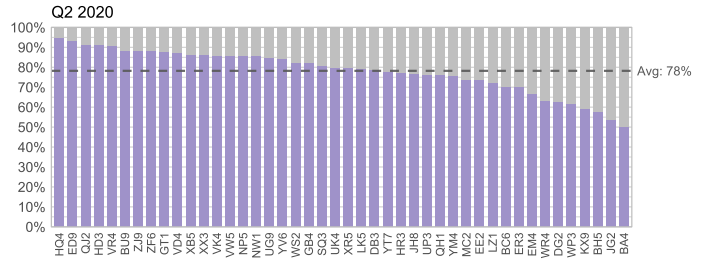
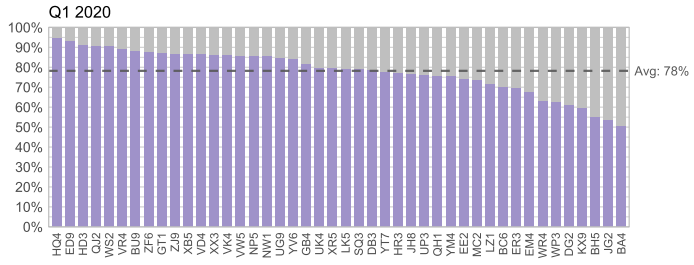
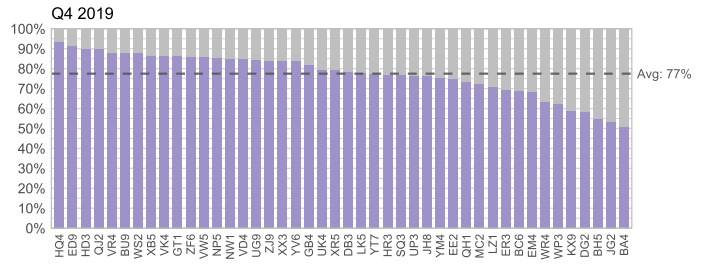
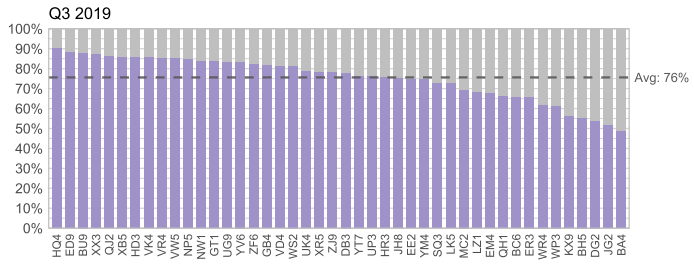


## Baseline

## Measurement Year 2020 (Intra-COVID)

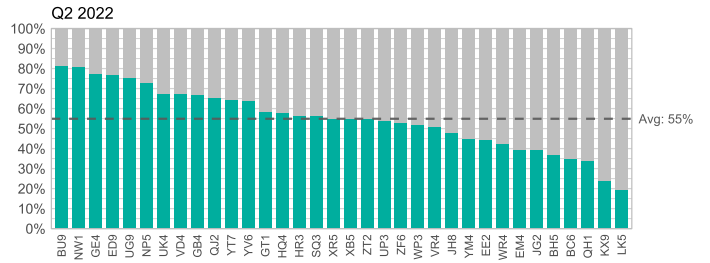
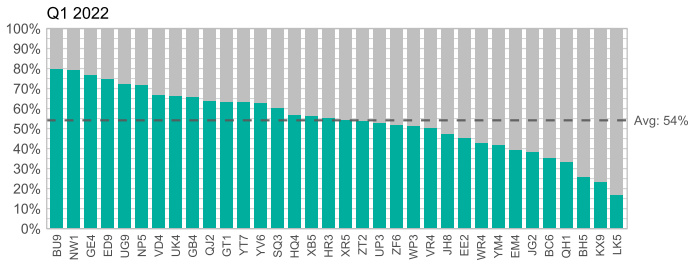
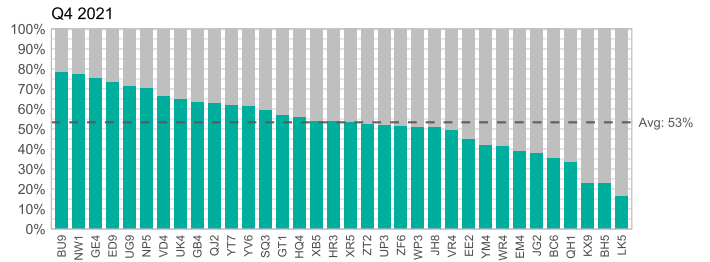
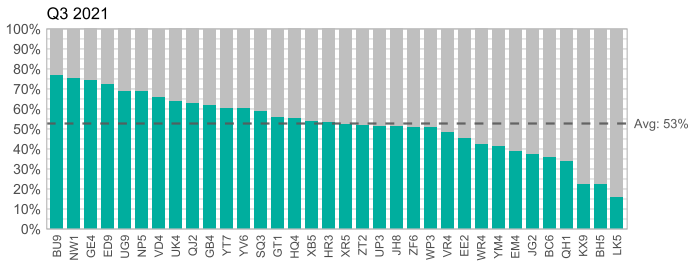


# Measurement Year 2019 (Pre-COVID)



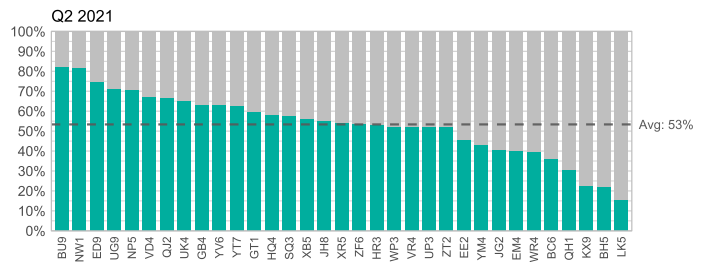
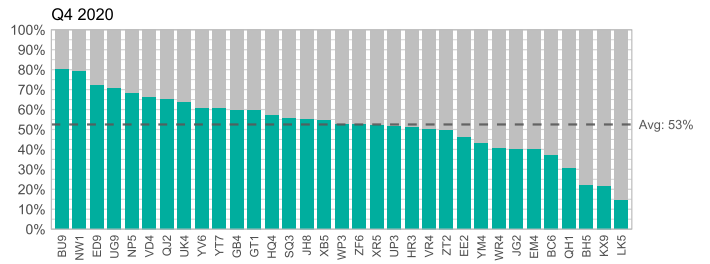
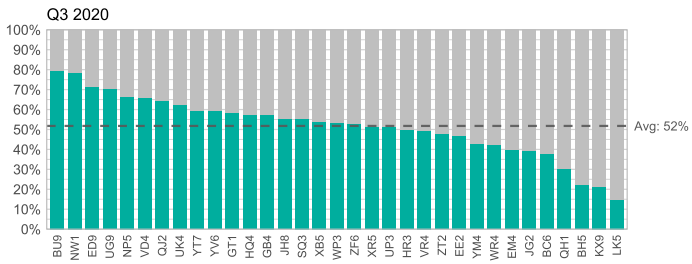
# Td/Tdap (M3)

## Measurement Year 2021

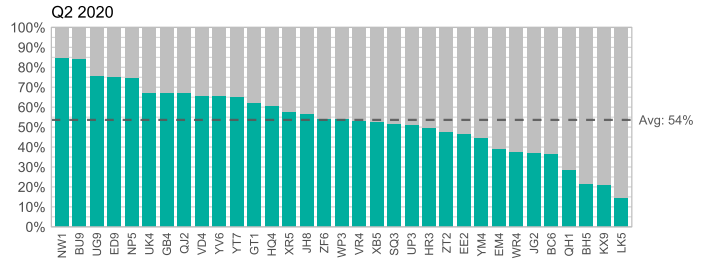
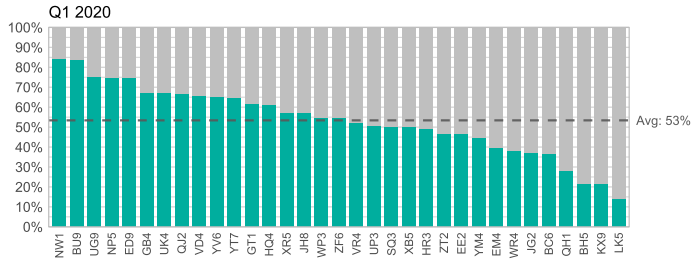
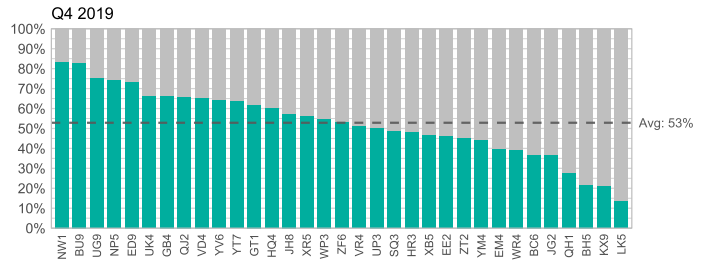
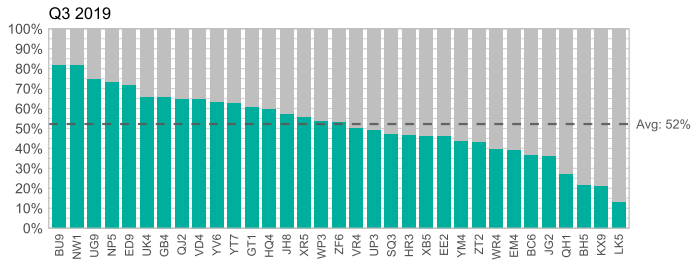


## Baseline

### Measurement Year 2020 (Intra-COVID)

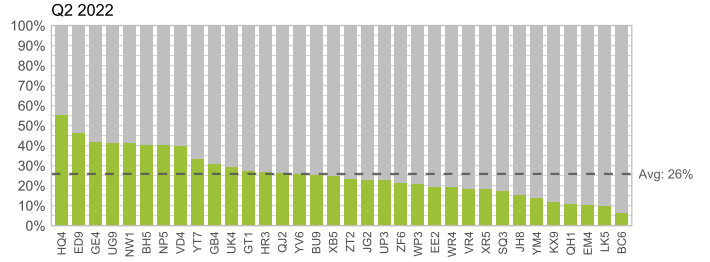
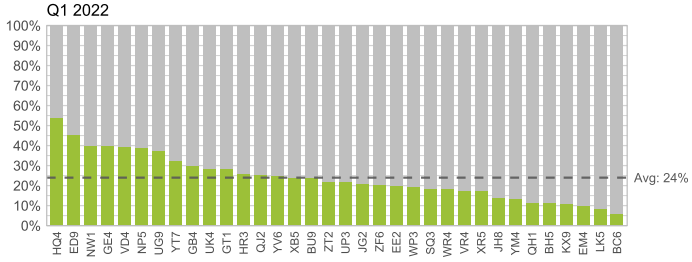
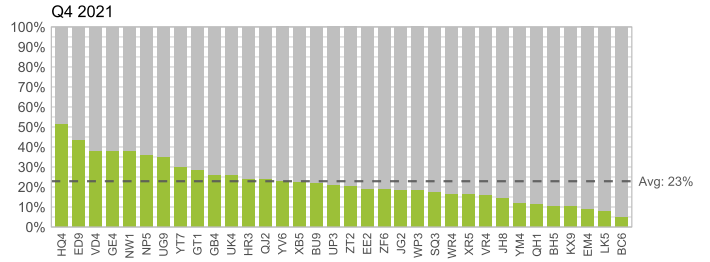
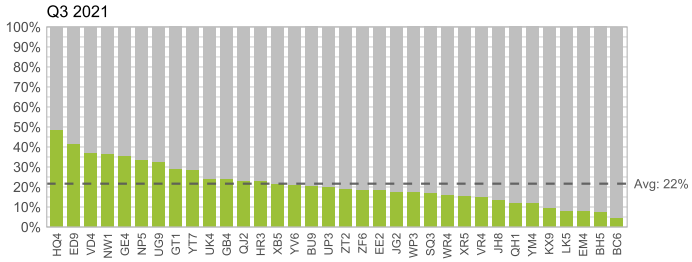


# Measurement Year 2019 (Pre-COVID)



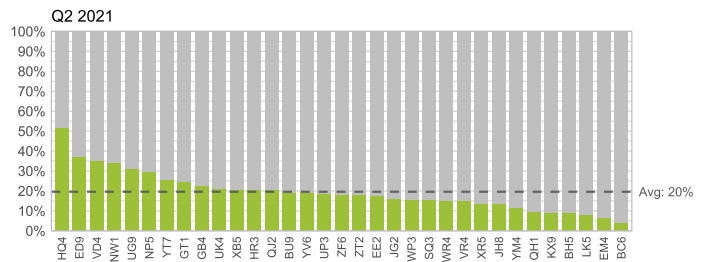
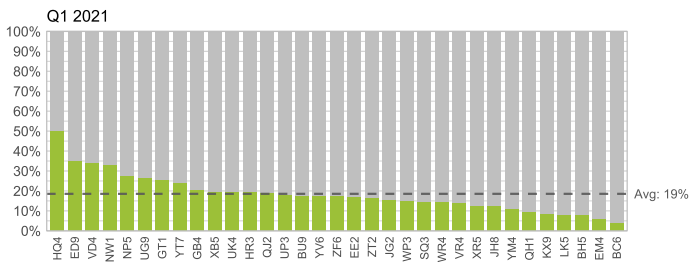
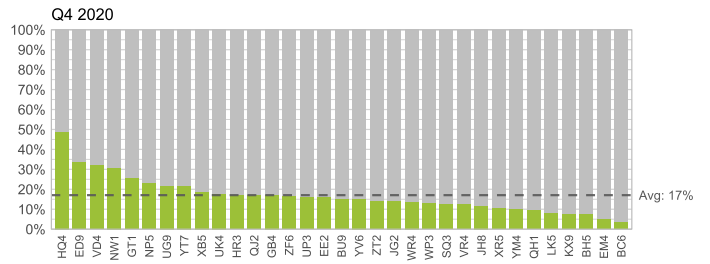
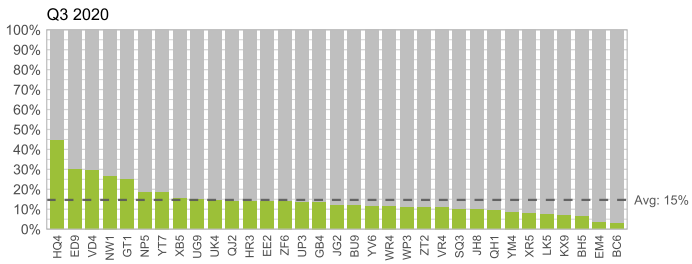
# Zoster (M4)

## Measurement Year 2021

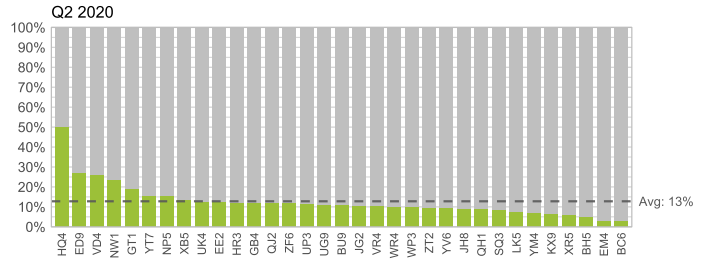
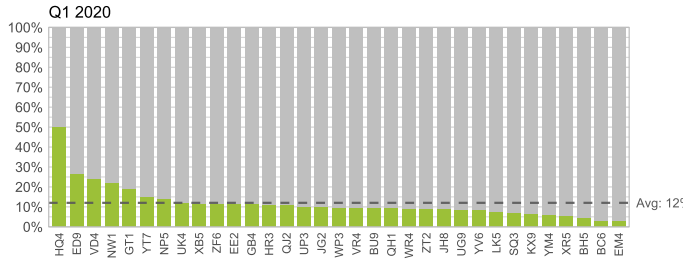
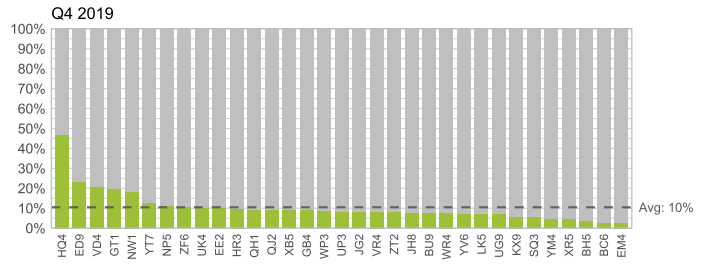
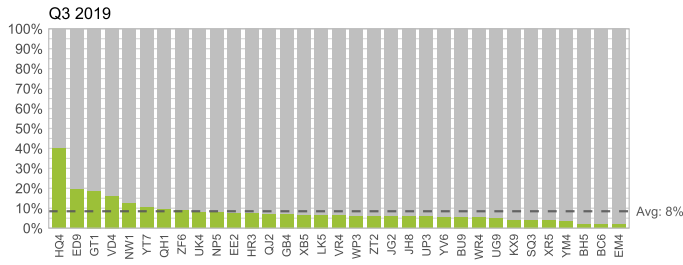


## Baseline

### Measurement Year 2020 (Intra-COVID)

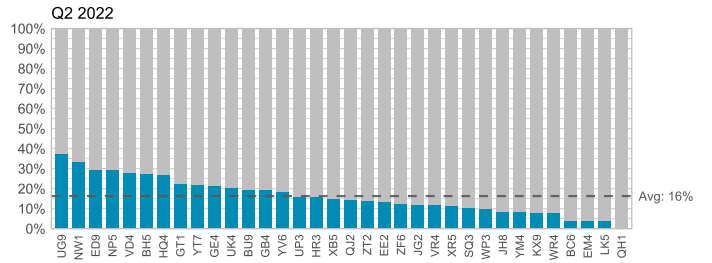
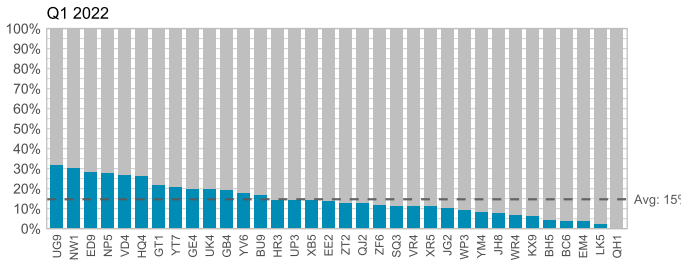
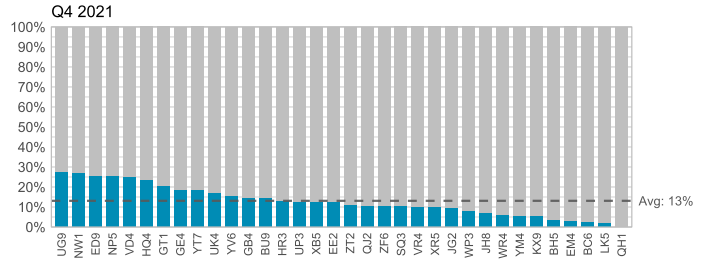
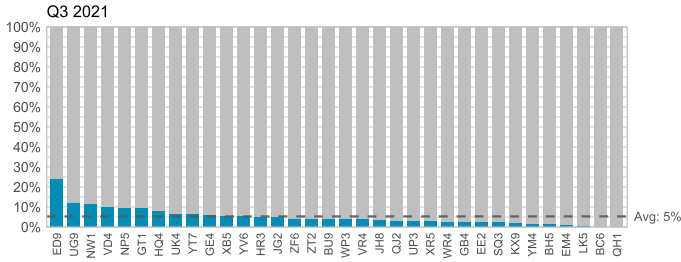


# Measurement Year 2019 (Pre-COVID)



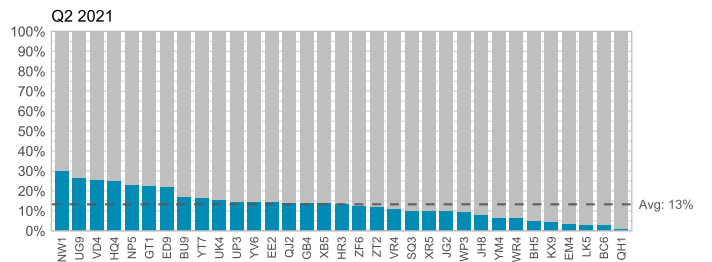
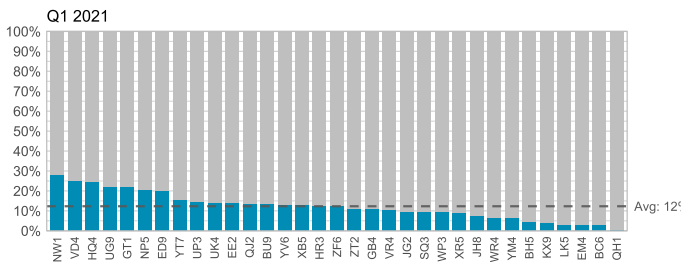
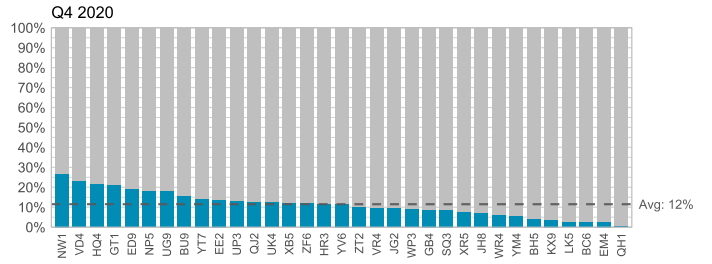
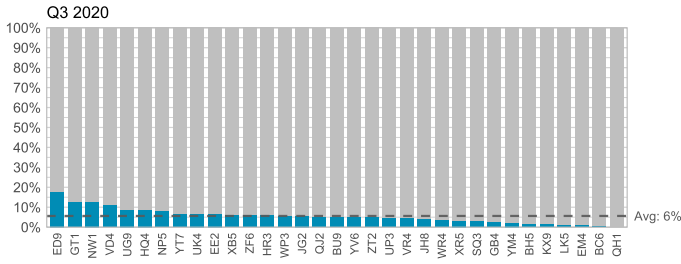
# Bundle (M5)

## Measurement Year 2021



## Baseline

## Measurement Year 2020 (Intra-COVID)





# Measurement Year 2019 (Pre-COVID)

