

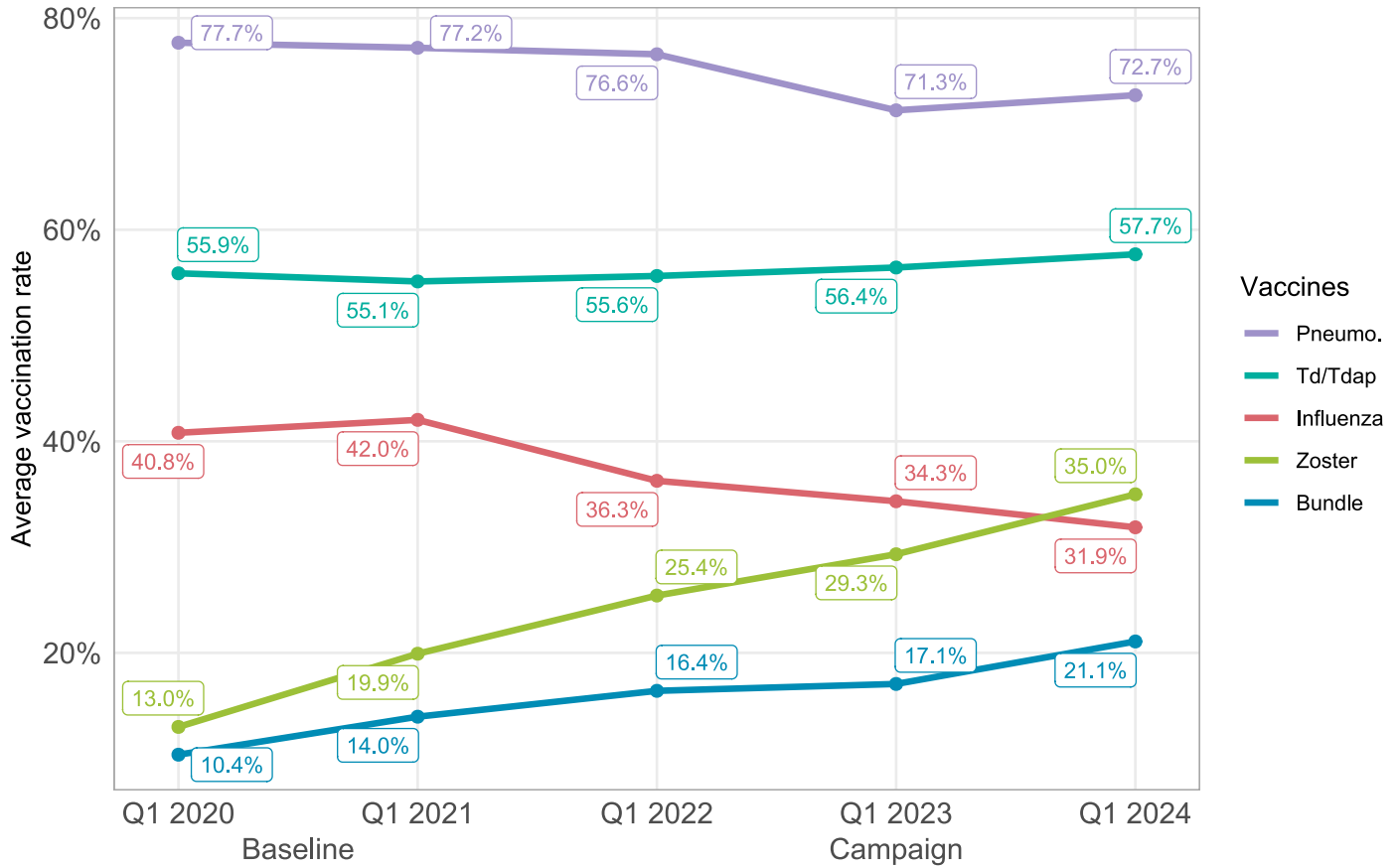
Rise to Immunize[®]

Blinded Comparative Report

May, 2024

Group-weighted average of vaccination rates across all organizations, year-over-year

Cumulative Measurement Year (MY) rates as of Q1 in each year



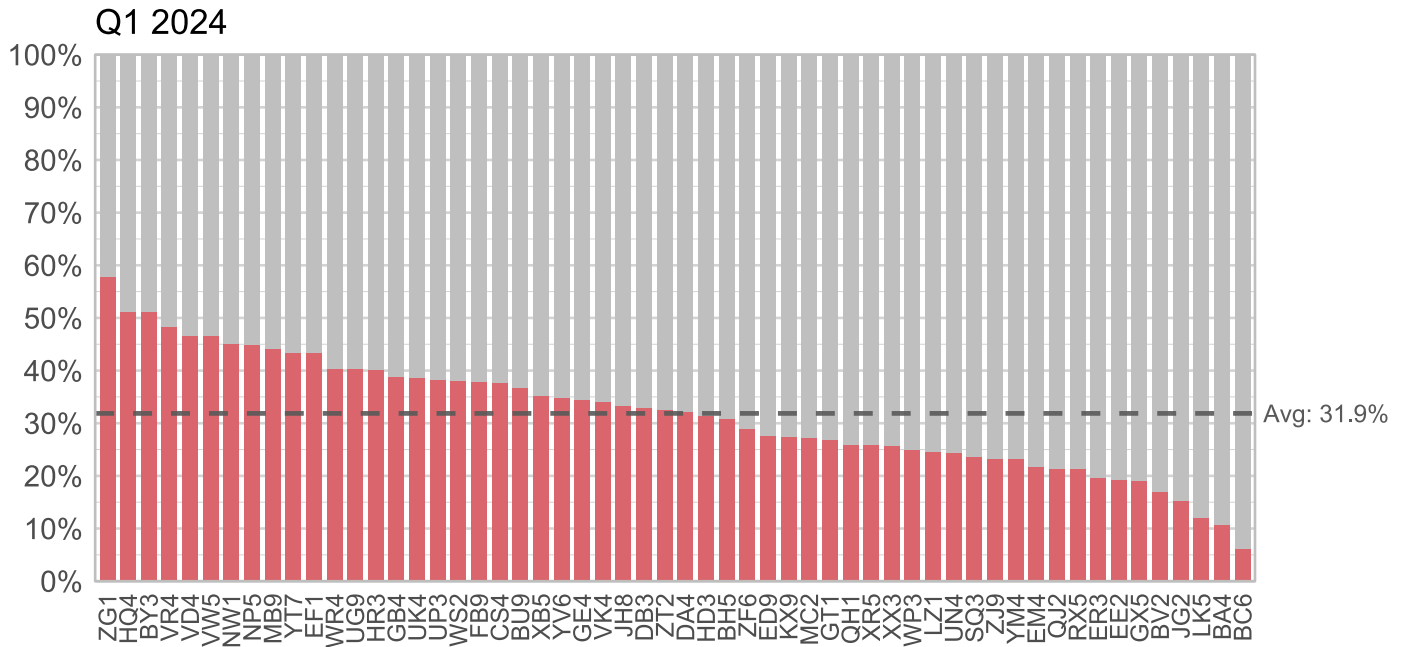
This plot compares the average rates of all Q1s in the campaign so far, including Q1 2024 (the most recent reporting quarter).

- The average pneumococcal vaccination rate across all organizations increased by 1.4% this year (Q1 2024) compared to last year (Q1 2023), an encouraging sign that groups have rapidly adapted to the new conjugate-only measure after a full year.
- The Td/Tdap vaccination rate has increased by 1.2%. Td/Tdap rates have continued to climb.
- Zoster vaccination rates increased by 5.7%. The steady rate increase continues!
- The downward trend of influenza vaccination rates has persisted.

Influenza (M1)

Intervention

Measurement Year 2023



Top 5 Highest Influenza Vaccination Rates in Q1 2024

Org	Rank	Rate
ZG1	1	57.8%
HQ4	2	51.1%
BY3	3	51.1%
VR4	4	48.3%
VD4	5	46.6%

Top 5 Most Improved Orgs by Rank

of spots moved from Q1 2023 to Q1 2024

Org	Increase in Rank
FB9	8
GE4	7
ZF6	7
NP5	6
YT7	6

Top 5 Orgs with Largest Increase (or Smallest Decrease) in Rate

Change from Q1 2023 to Q1 2024

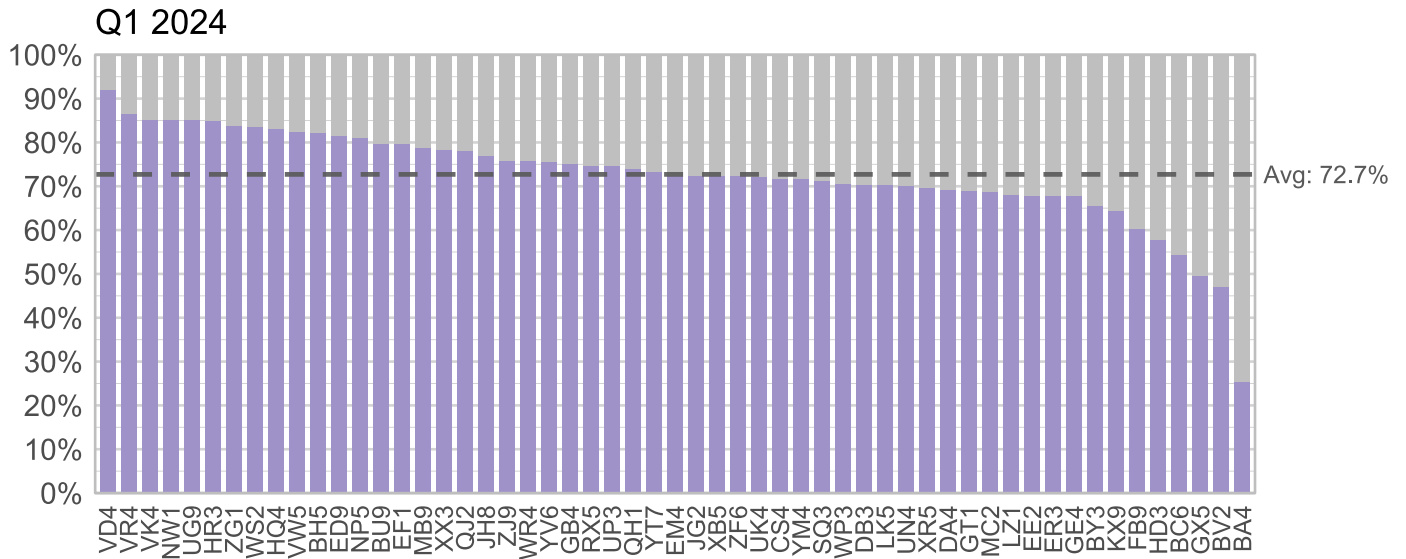
Org	Change in Rate
BV2	6.5%
GX5	4.6%
FB9	4.3%
ZT2	3.5%
RX5	3.1%

- Congratulations to the 5 organizations with the highest influenza vaccination rates in Q1 2024, ZG1, HQ4, BY3, VR4, and VD4!
- Several groups have seen improvements in rates despite the overall downward trend, including BV2, GX5, FB9, and ZT2.

Pneumococcal (M2)

Intervention

Measurement Year 2023



Top 5 Highest Pneumococcal Vaccination Rates in Q1 2024

Org	Rank	Rate
VD4	1	92.0%
VR4	2	86.6%
VK4	3	85.2%
NW1	4	85.2%
UG9	5	85.1%

Top 5 Most Improved Orgs by Rank

of spots moved from Q1 2023 to Q1 2024

Org	Increase in Rank
YM4	10
UP3	9
SQ3	7
DA4	7
ZG1	6

Top 5 Orgs with Largest Increase (or Smallest Decrease) in Rate

Change from Q1 2023 to Q1 2024

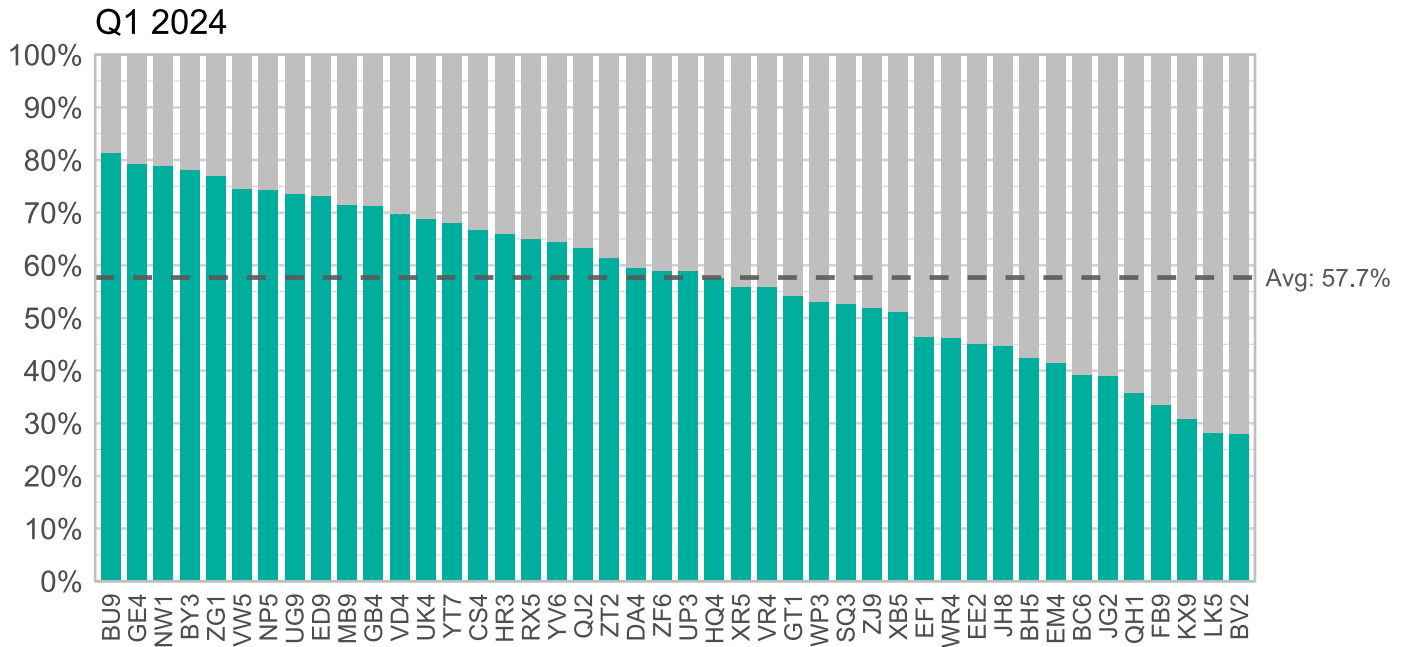
Org	Change in Rate
DA4	7.7%
YM4	7.0%
UP3	6.1%
YT7	4.5%
SQ3	4.4%

- Congratulations to the organizations with the top 5 highest pneumococcal vaccination rates, VD4, VK4, VR4, NW1, and UG9!
- DA4, YM4, UP3, and others continue to improve their pneumococcal vaccination rates.

Td/Tdap (M3)

Intervention

Measurement Year 2023



Top 5 Highest Td/Tdap Vaccination Rates in Q1 2024

Org	Rank	Rate
BU9	1	81.4%
GE4	2	79.2%
NW1	3	78.9%
BY3	4	78.1%
ZG1	5	77.0%

Top 5 Most Improved Orgs by Rank

of spots moved from Q1 2023 to Q1 2024

Org	Increase in Rank
ZF6	6
VR4	4
EF1	3
GB4	2
RX5	2

Top 5 Orgs with Largest Increase (or Smallest Decrease) in Rate

Change from Q1 2023 to Q1 2024

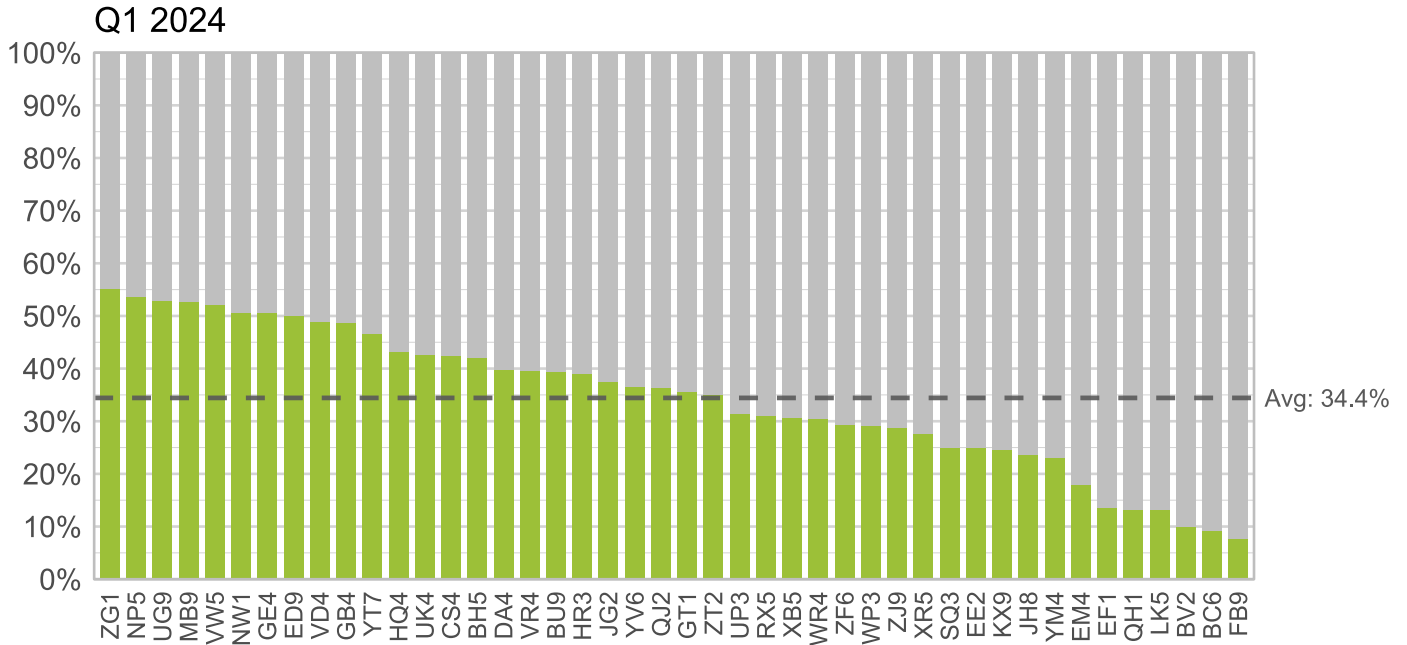
Org	Change in Rate
RX5	6.2%
ZF6	5.8%
VR4	5.6%
LK5	4.8%
KX9	4.2%

- Congratulations to the 5 organizations with the highest Td/Tdap vaccination rates in Q1 2024, BU9, GE4, NW1, BY3, and ZG1! These are the same top 5 high performers as last quarter.
- RX5, ZF6, VR4, and others have continued to improve their Td/Tdap vaccination rates.

Zoster (M4)

Intervention

Measurement Year 2023



Top 5 Highest Zoster Vaccination Rates in Q1 2024

Org	Rank	Rate
ZG1	1	55.2%
NP5	2	53.6%
UG9	3	52.8%
MB9	4	52.6%
VW5	5	52.2%

Top 5 Most Improved Orgs by Rank
of spots moved from Q1 2023 to Q1 2024

Org	Increase in Rank
VR4	11
GB4	6
RX5	5
NP5	4
ZG1	3

Top 5 Orgs with Largest Increase (or Smallest Decrease) in Rate

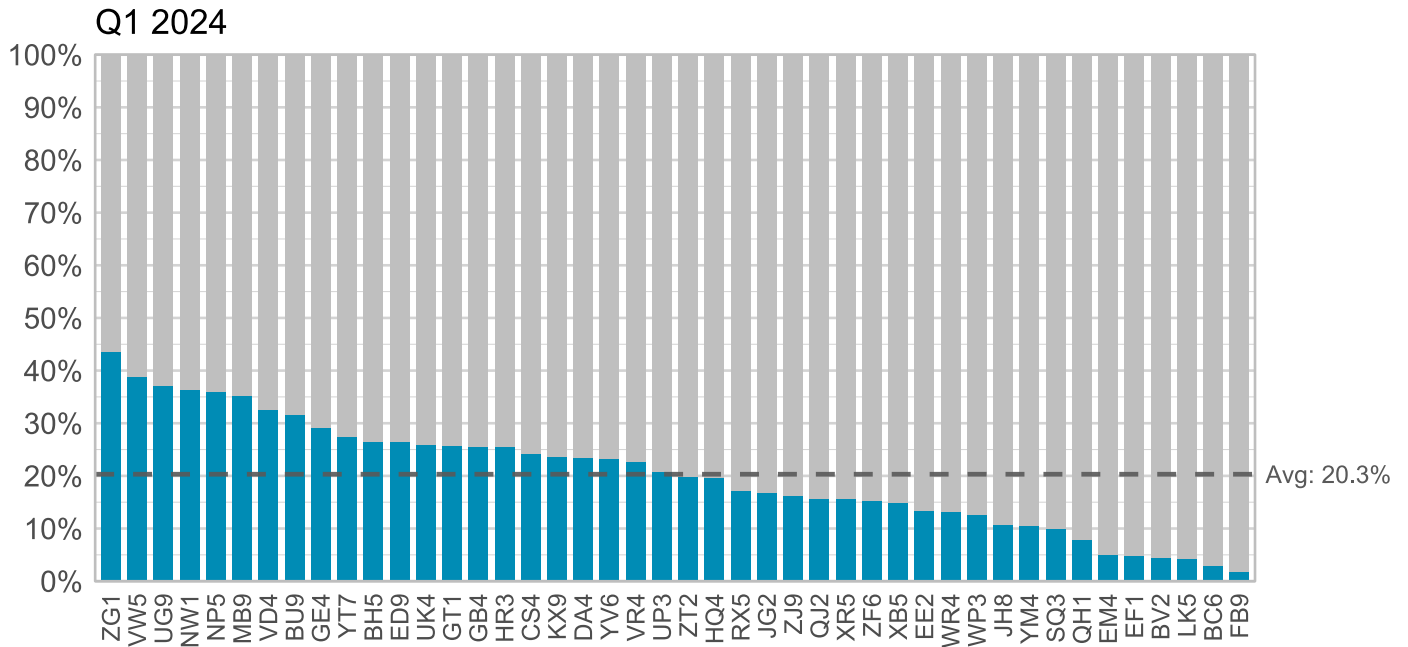
Org	Change in Rate
VR4	14.6%
GB4	14.6%
BU9	8.6%
RX5	8.5%
ZG1	7.7%

- Congratulations to the 5 organizations with the highest zoster vaccination rates in Q4 2023, ZG1, NP5, UG9, MB9, and VW5! Many of our high performing organizations have eclipsed 50%.
- VR4, GB4 and others lead the pack in improving zoster vaccination rates.

Bundle (M5)

Intervention

Measurement Year 2023



Top 5 Highest Bundle Vaccination Rates in Q1 2024

Org	Rank	Rate
ZG1	1	43.5%
VW5	2	38.8%
UG9	3	37.1%
NW1	4	36.4%
NP5	5	36.0%

Top 5 Most Improved Orgs by Rank

of spots moved from Q1 2023 to Q1 2024

Org	Increase in Rank
GE4	10
BU9	8
RX5	8
KX9	6
YT7	3

Top 5 Orgs with Largest Increase (or Smallest Decrease) in Rate

Change from Q1 2023 to Q1 2024

Org	Change in Rate
BU9	12.4%
GE4	11.3%
KX9	9.7%
VR4	8.3%
NP5	7.0%

- Congratulations to the 5 organizations with the highest Bundle vaccination rates!
- BU9 and GE4 have shown rapid improvements in the Bundle measure.

Performance Summary

Q1 2024: All Organizations

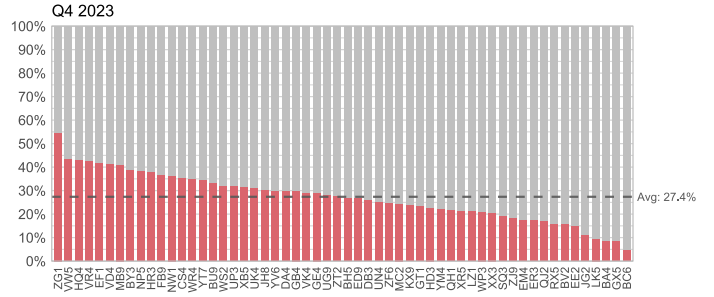
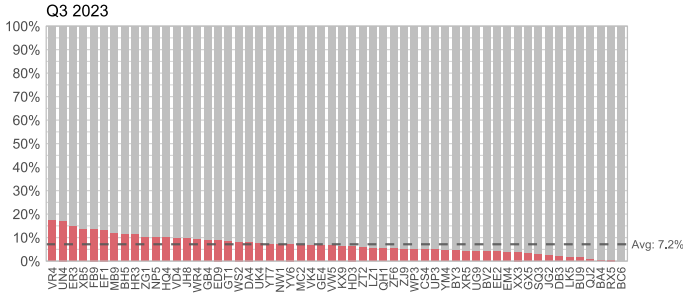
Org	Track	Influenza	Pneumo.	Td/Tdap	Zoster	Bundle
BA4	Basic	10.8%	25.3%	-	-	-
DB3	Basic	32.9%	70.4%	-	-	-
ER3	Basic	19.7%	67.8%	-	-	-
GX5	Basic	19.0%	49.7%	-	-	-
HD3	Basic	31.5%	57.9%	-	-	-
LZ1	Basic	24.6%	68.1%	-	-	-
MC2	Basic	27.3%	68.7%	-	-	-
UN4	Basic	24.4%	70.2%	-	-	-
VK4	Basic	34.1%	85.2%	-	-	-
WS2	Basic	38.0%	83.6%	-	-	-
XX3	Basic	25.7%	78.4%	-	-	-
BC6	Core	6.1%	54.4%	39.2%	9.2%	2.9%
BH5	Core	30.9%	82.2%	42.4%	42.1%	26.4%
BU9	Core	36.8%	79.7%	81.4%	39.4%	31.6%
BV2	Core	17.0%	47.0%	28.0%	9.9%	4.4%
BY3	Core	51.1%	65.6%	78.1%	59.6%	54.9%
CS4	Core	37.7%	71.8%	66.7%	42.5%	24.1%
DA4	Core	32.1%	69.2%	59.6%	39.7%	23.4%
ED9	Core	27.6%	81.6%	73.2%	50.0%	26.4%
EE2	Core	19.2%	67.9%	45.1%	25.0%	13.4%
EF1	Core	43.3%	79.7%	46.4%	13.6%	4.9%
EM4	Core	21.8%	72.5%	41.4%	17.9%	5.1%
FB9	Core	37.8%	60.3%	33.5%	7.6%	1.7%
GB4	Core	38.9%	75.2%	71.3%	48.7%	25.6%
GE4	Core	34.5%	67.8%	79.2%	50.5%	29.2%
GT1	Core	26.8%	69.0%	54.2%	35.6%	25.7%
HQ4	Core	51.1%	83.2%	57.6%	43.2%	19.7%
HR3	Core	40.1%	85.0%	65.9%	39.1%	25.6%
JG2	Core	15.3%	72.5%	39.1%	37.5%	16.8%
JH8	Core	33.4%	77.0%	44.8%	23.6%	10.8%
KX9	Core	27.4%	64.5%	30.9%	24.5%	23.6%
LK5	Core	12.1%	70.3%	28.1%	13.2%	4.3%
MB9	Core	44.1%	78.9%	71.5%	52.6%	35.2%
NP5	Core	44.9%	81.1%	74.4%	53.6%	36.0%
NW1	Core	45.0%	85.2%	78.9%	50.6%	36.4%
QH1	Core	25.9%	74.1%	35.8%	13.2%	7.8%
QJ2	Core	21.4%	78.1%	63.3%	36.3%	15.6%
RX5	Core	21.4%	74.8%	65.1%	31.0%	17.2%
SQ3	Core	23.6%	71.3%	52.6%	25.0%	10.0%

Org	Track	Influenza	Pneumo.	Td/Tdap	Zoster	Bundle
UG9	Core	40.4%	85.1%	73.6%	52.8%	37.1%
UK4	Core	38.6%	72.1%	68.8%	42.6%	25.9%
UP3	Core	38.2%	74.7%	58.9%	31.4%	20.8%
VD4	Core	46.6%	92.0%	69.8%	48.9%	32.6%
VR4	Core	48.3%	86.6%	55.9%	39.5%	22.6%
VW5	Core	46.6%	82.4%	74.6%	52.2%	38.8%
WP3	Core	24.9%	70.5%	53.0%	29.1%	12.6%
WR4	Core	40.4%	75.8%	46.3%	30.5%	13.1%
XB5	Core	35.3%	72.3%	51.1%	30.7%	14.8%
XR5	Core	25.9%	69.7%	55.9%	27.7%	15.6%
YM4	Core	23.2%	71.7%	47.3%	23.0%	10.5%
YT7	Core	43.4%	73.3%	68.0%	46.6%	27.5%
YV6	Core	34.9%	75.6%	64.5%	36.5%	23.3%
ZF6	Core	29.0%	72.3%	59.0%	29.3%	15.2%
ZG1	Core	57.8%	83.9%	77.0%	55.2%	43.5%
ZJ9	Core	23.2%	75.9%	52.0%	28.8%	16.2%
ZT2	Core	32.6%	84.6%	61.5%	35.0%	19.8%

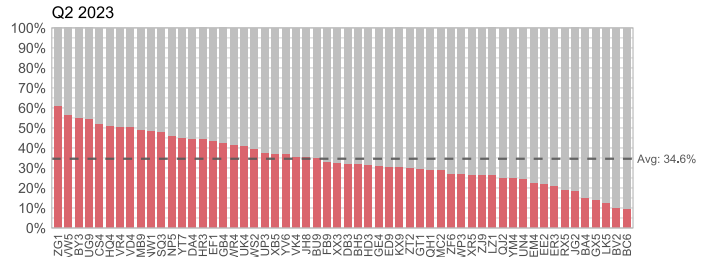
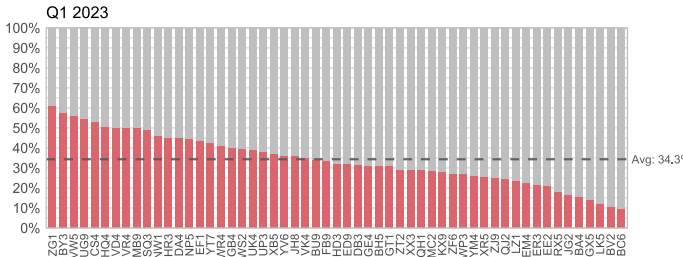
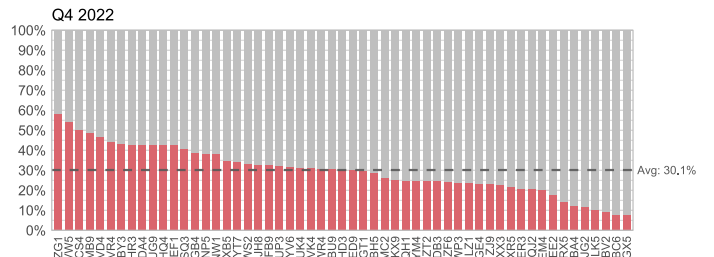
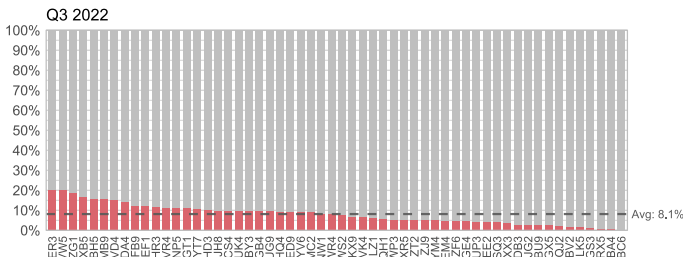
Past Data

Influenza (M1)

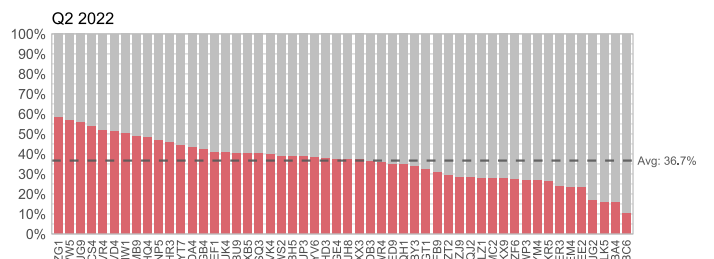
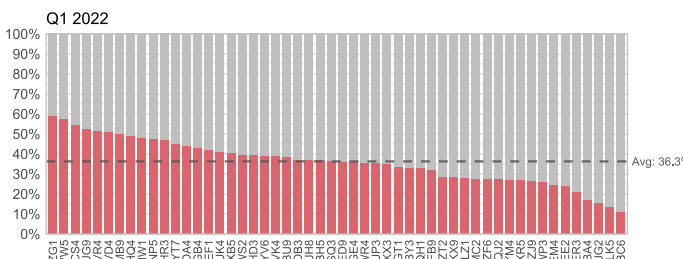
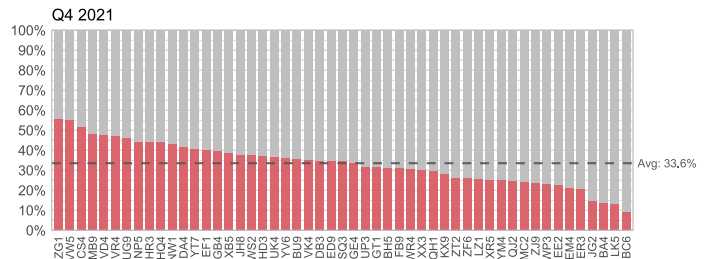
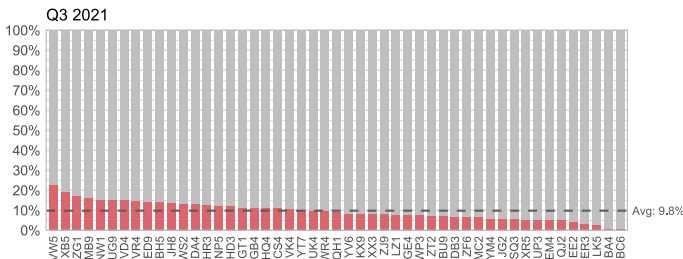
Measurement Year 2023



Measurement Year 2022

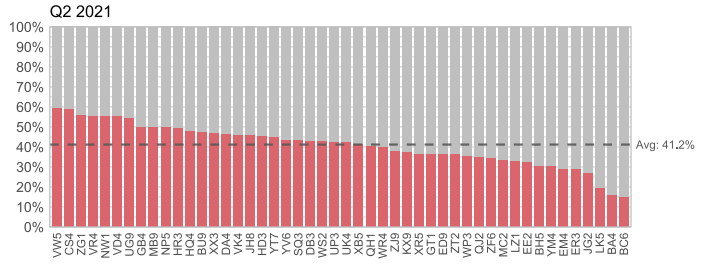
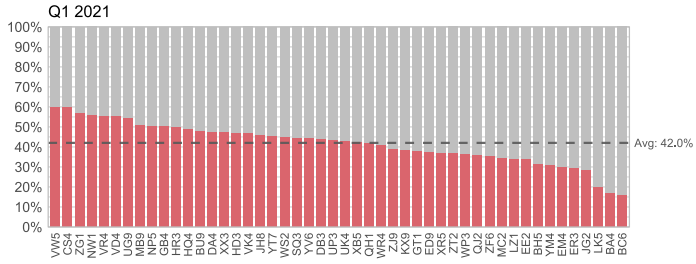
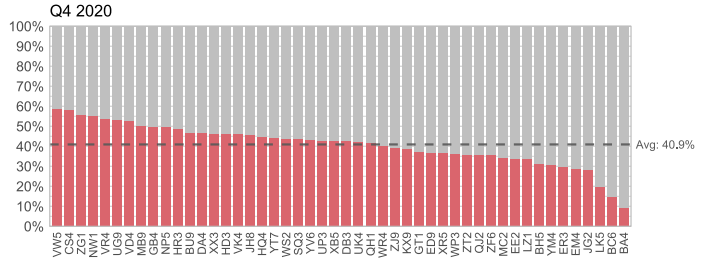
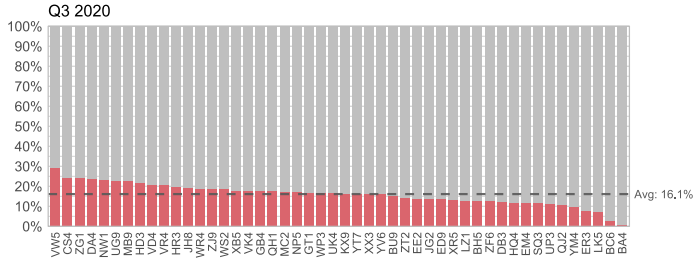


Measurement Year 2021

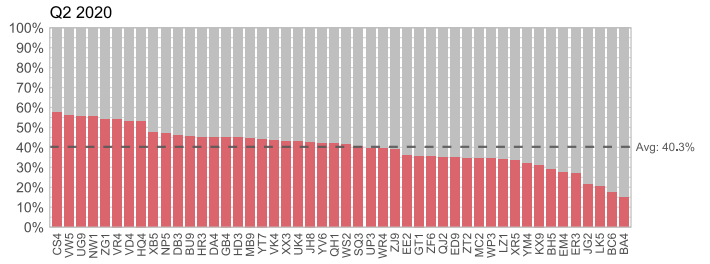
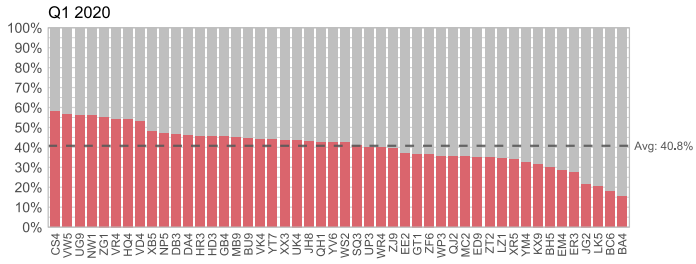
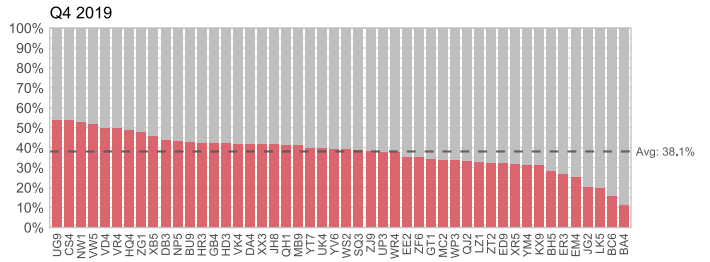
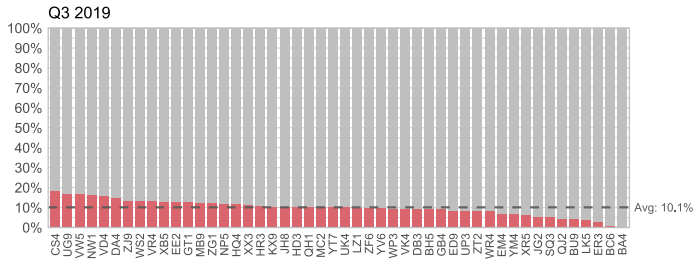


Baseline

Measurement Year 2020 (Intra-COVID)

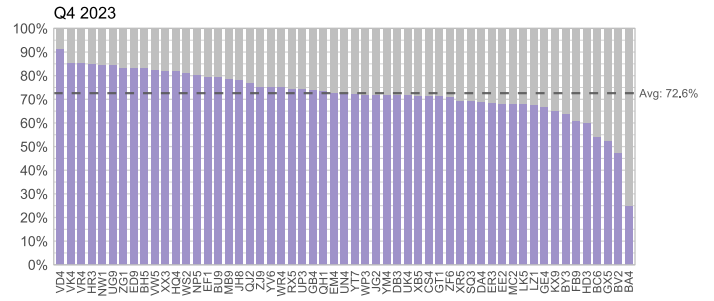
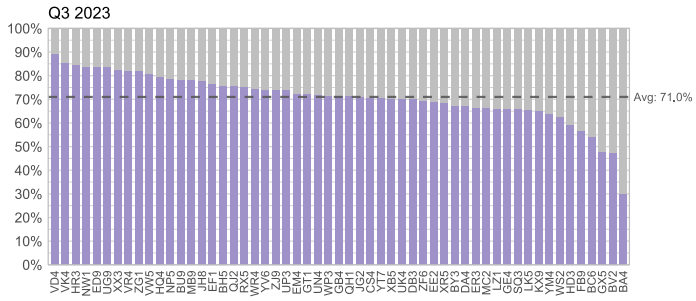


Measurement Year 2019 (Pre-COVID)

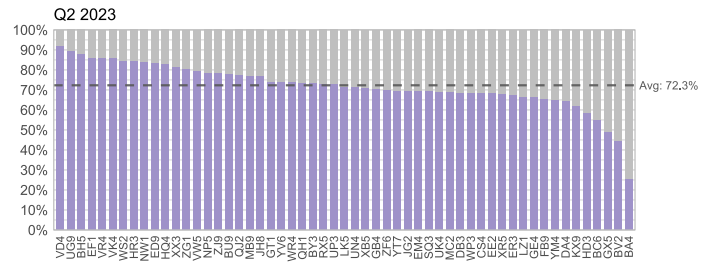
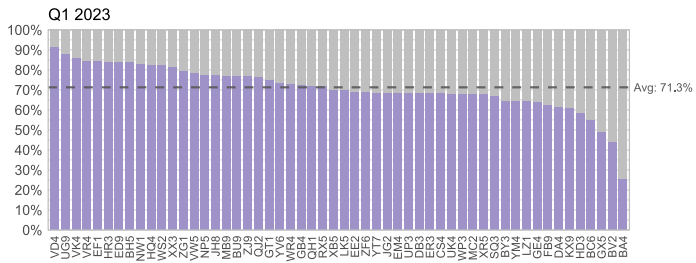
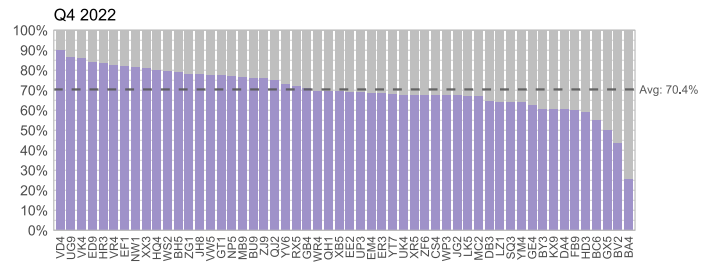
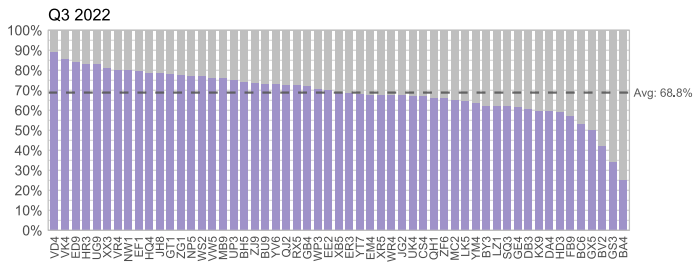


Pneumococcal (M2)

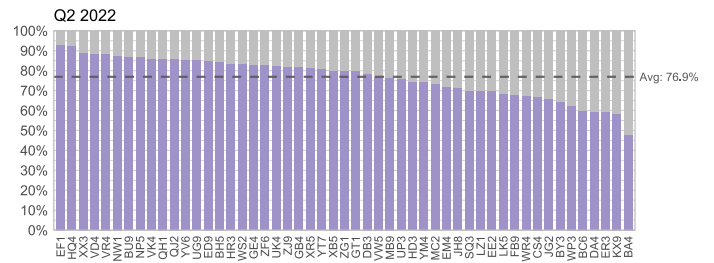
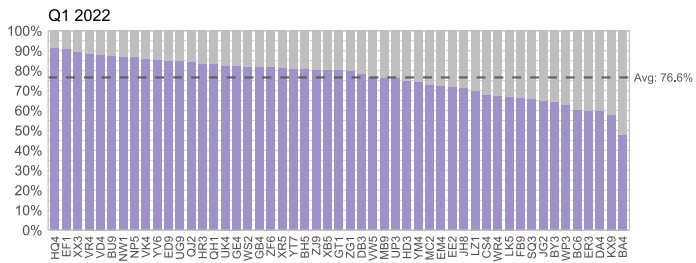
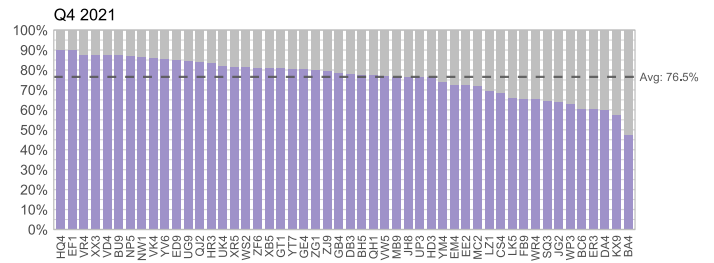
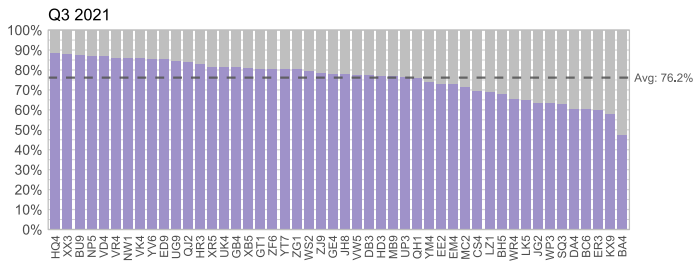
Measurement Year 2023



Measurement Year 2022

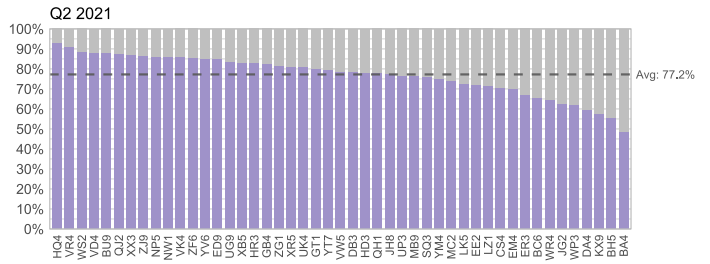
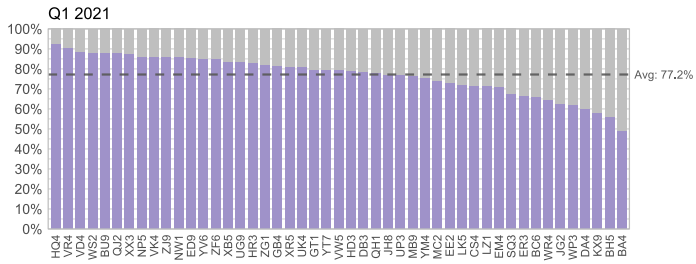
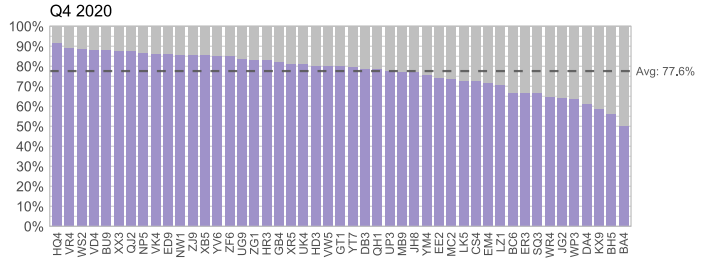
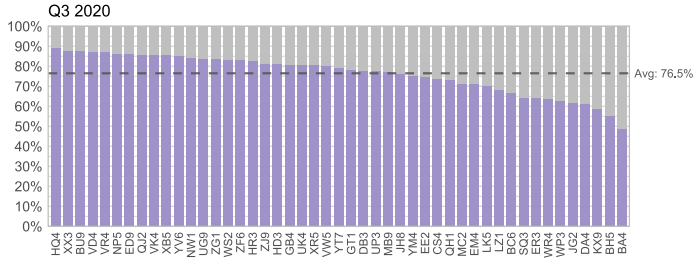


Measurement Year 2021

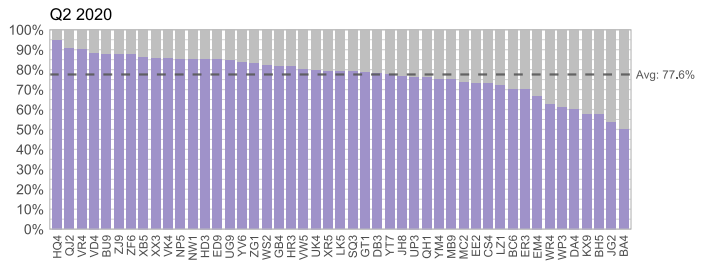
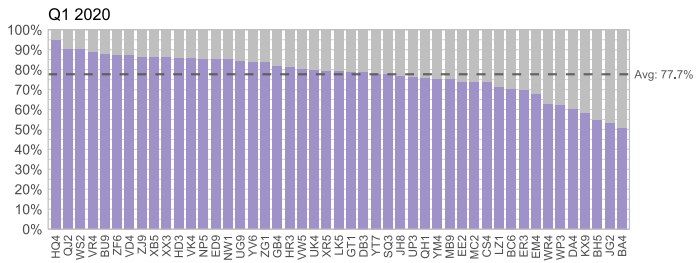
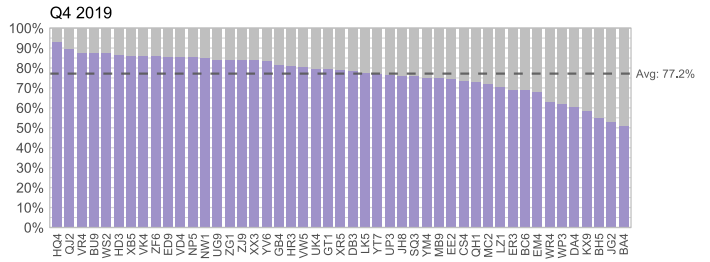
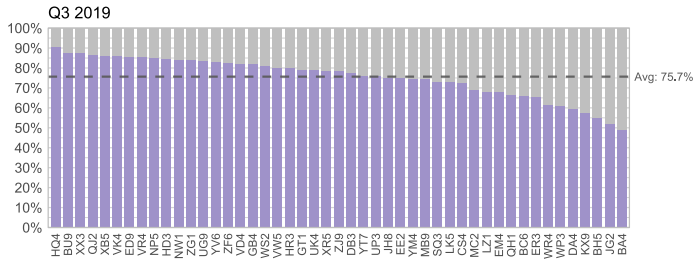


Baseline

Measurement Year 2020 (Intra-COVID)

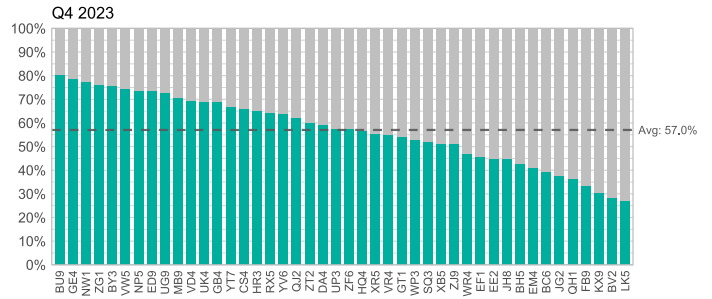
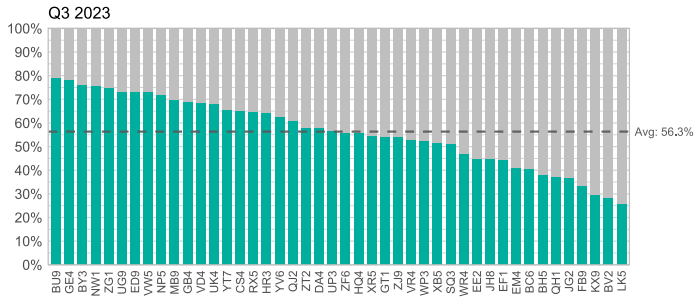


Measurement Year 2019 (Pre-COVID)

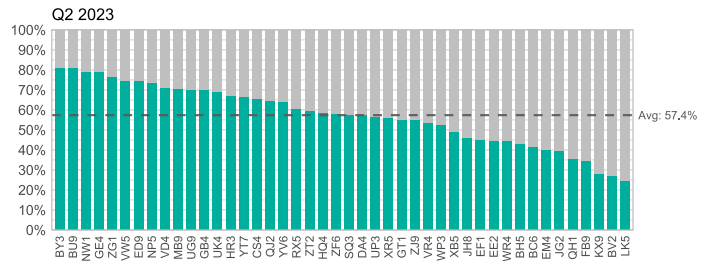
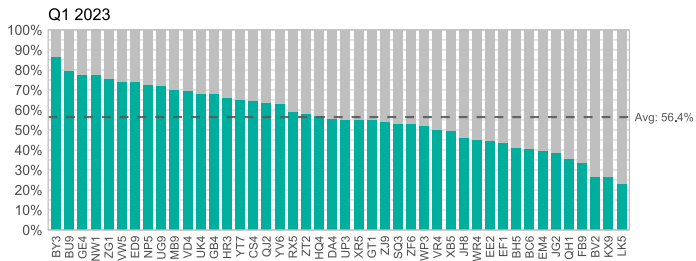
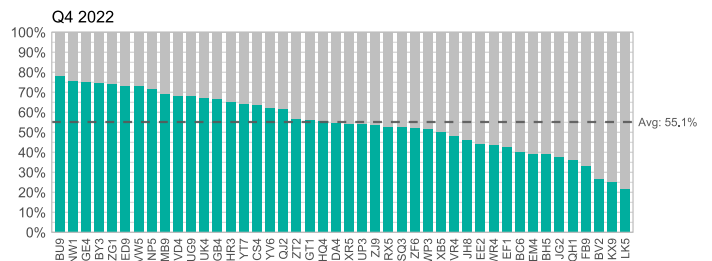
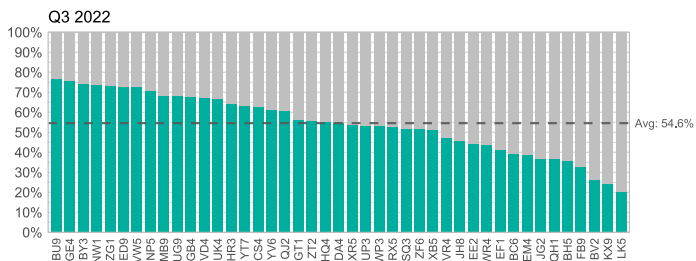


Td/Tdap (M3)

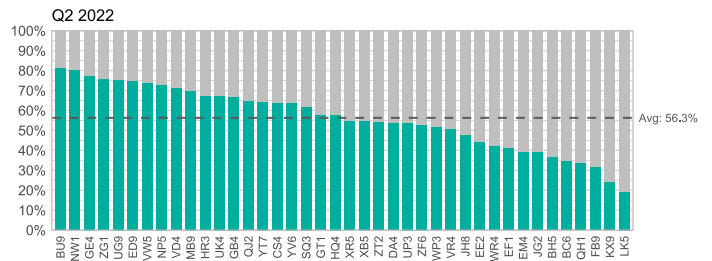
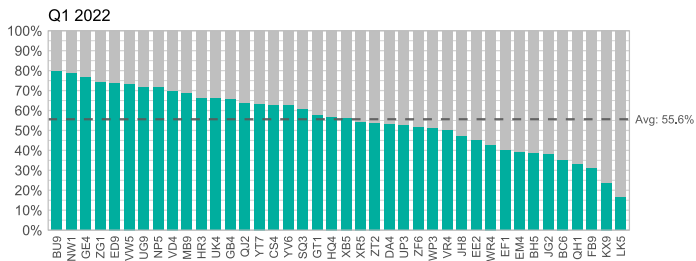
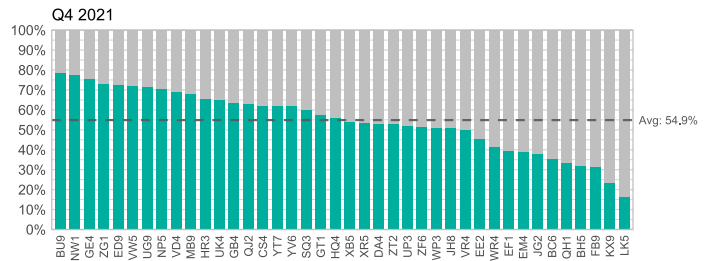
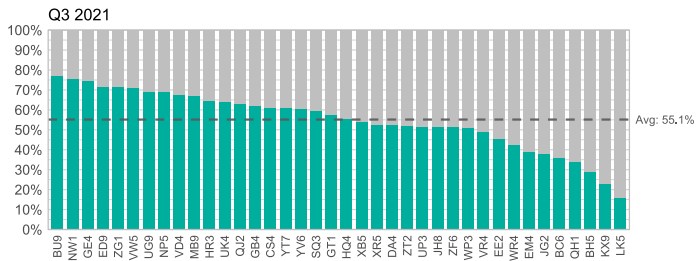
Measurement Year 2023



Measurement Year 2022

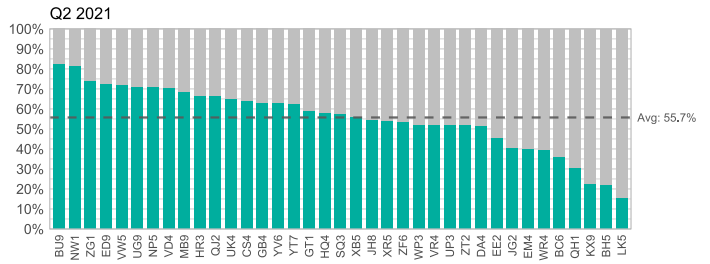
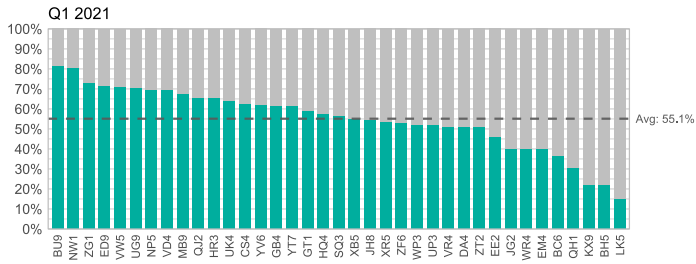
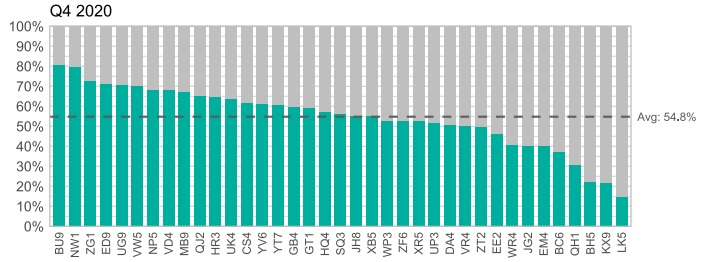
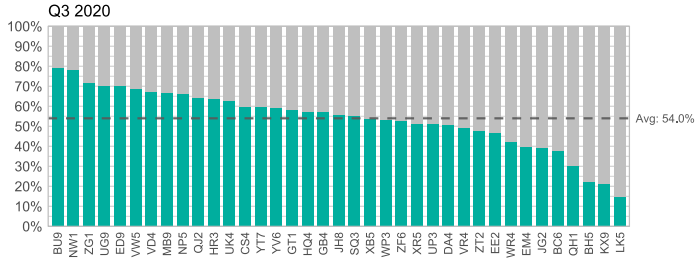


Measurement Year 2021

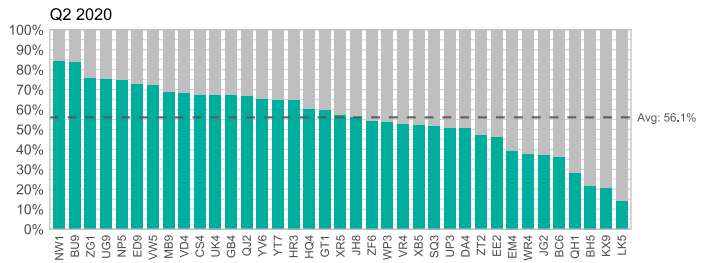
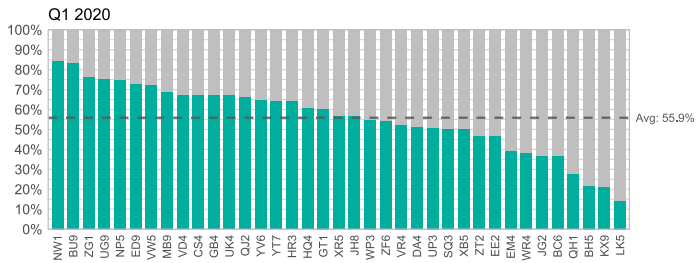
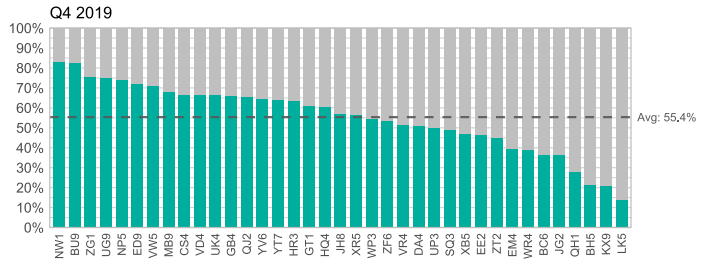
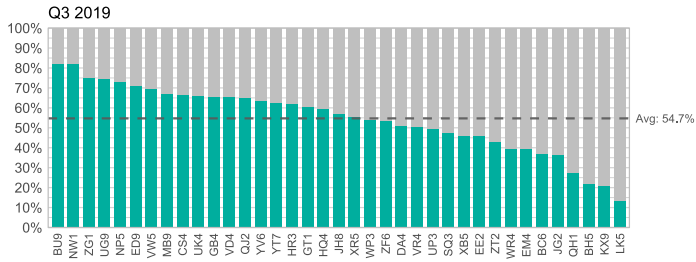


Baseline

Measurement Year 2020 (Intra-COVID)

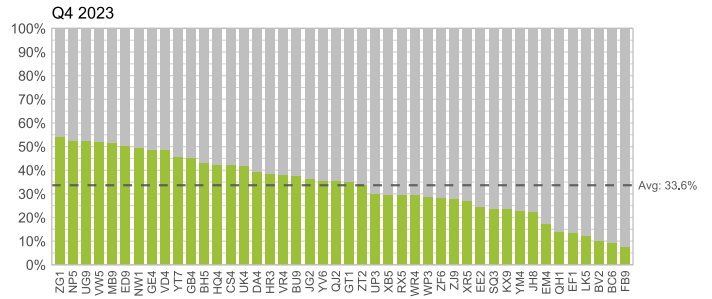
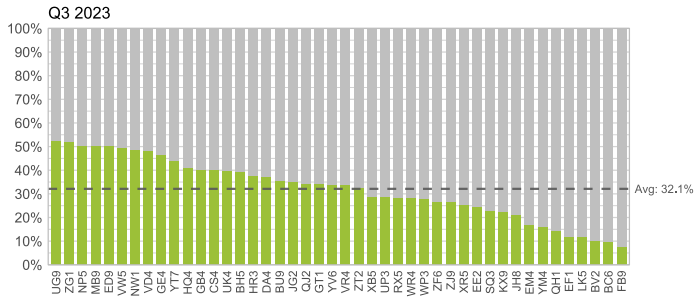


Measurement Year 2019 (Pre-COVID)

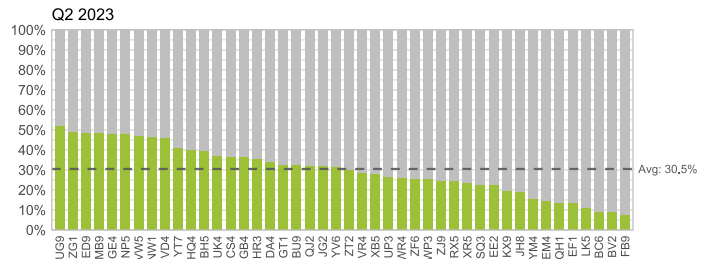
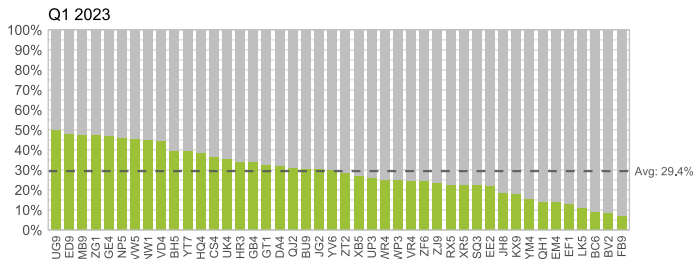
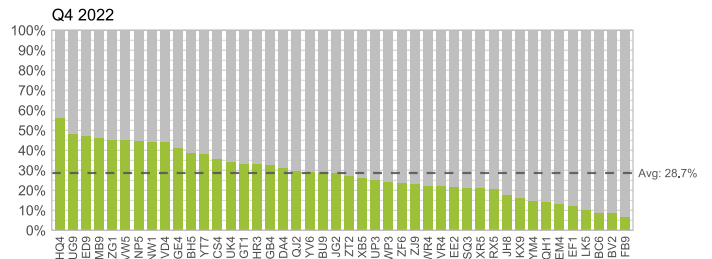
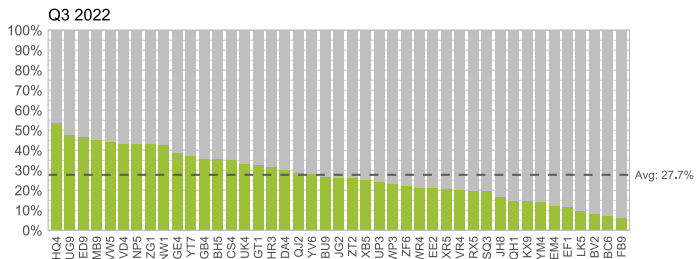


Zoster (M4)

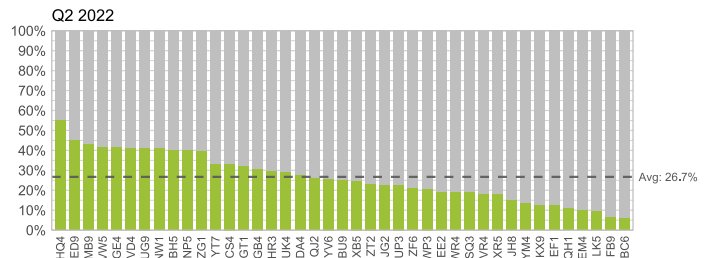
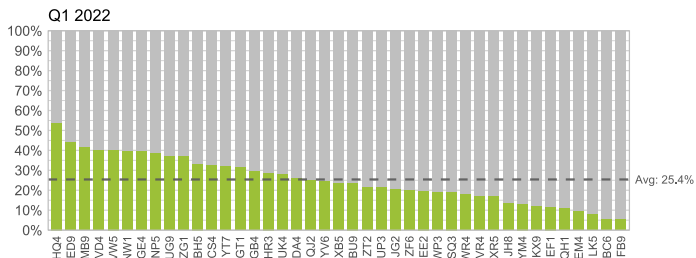
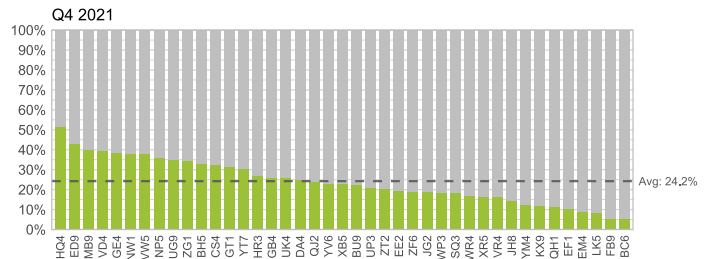
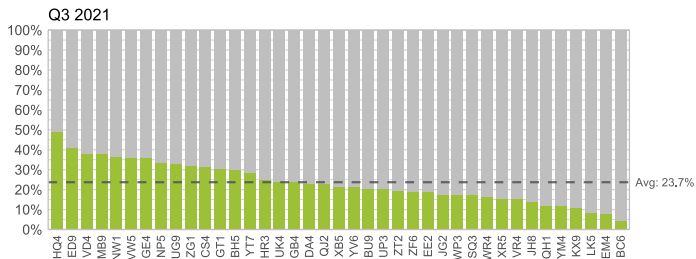
Measurement Year 2023



Measurement Year 2022

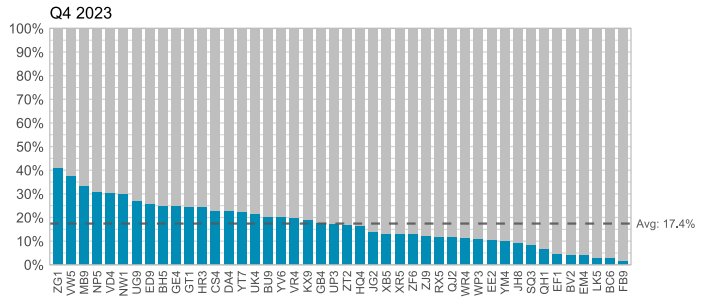
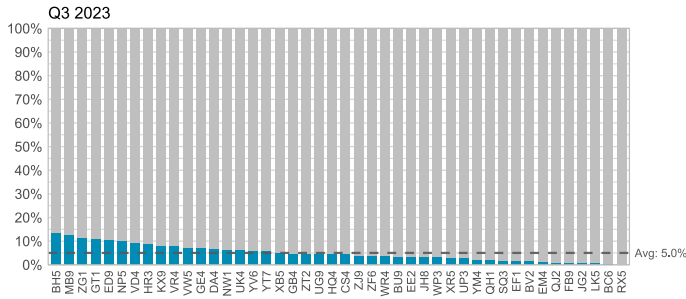


Measurement Year 2021

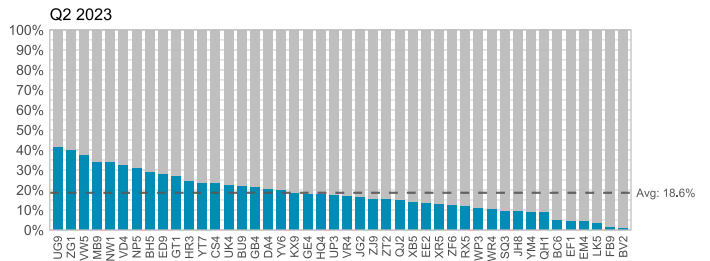
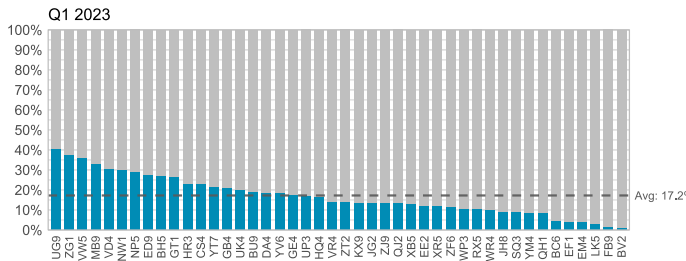
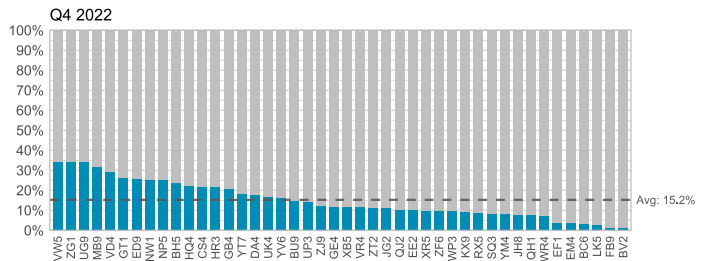
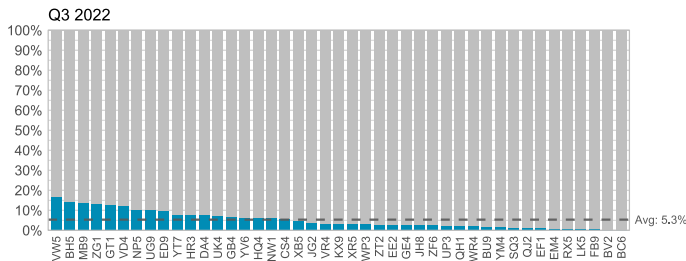


Bundle (M5)

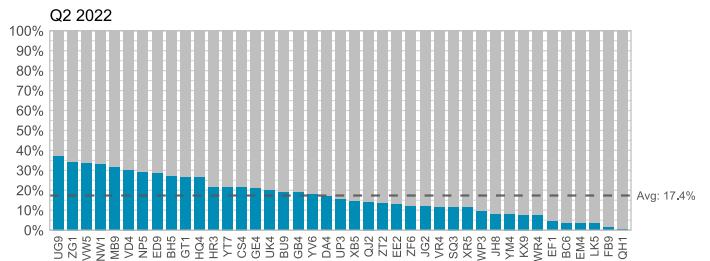
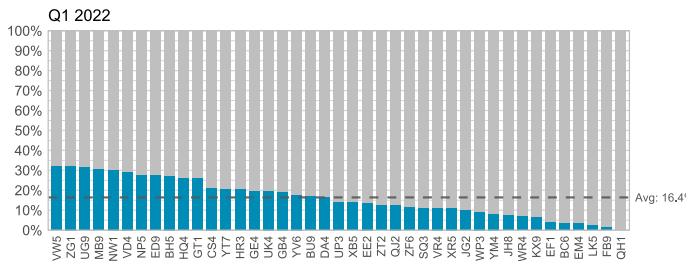
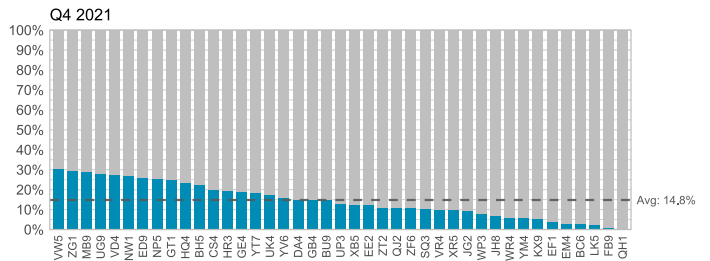
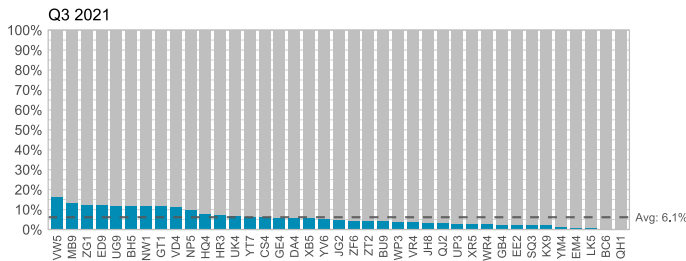
Measurement Year 2023



Measurement Year 2022

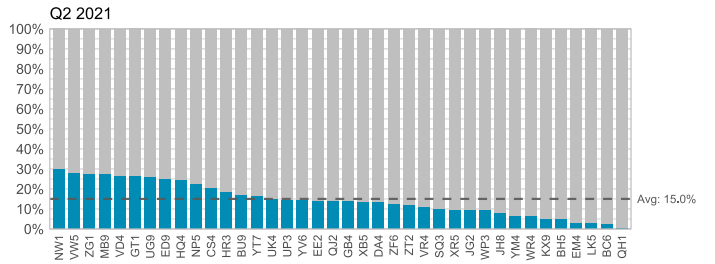
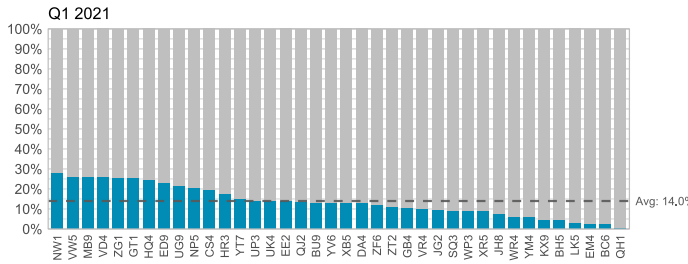
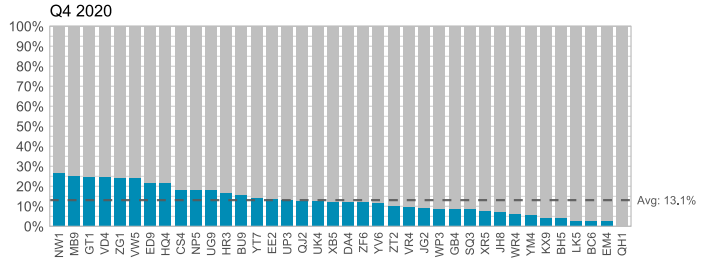
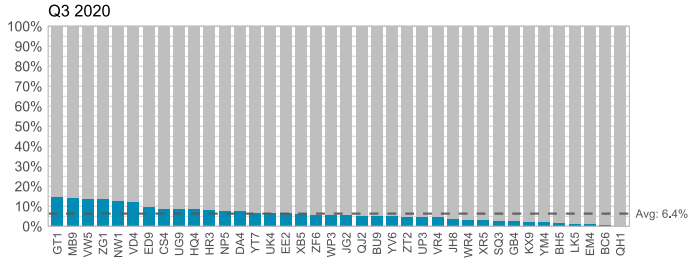


Measurement Year 2021



Baseline

Measurement Year 2020 (Intra-COVID)



Measurement Year 2019 (Pre-COVID)

