

Charting a Path to **Increase Immunization Rates** in the Post-Acute and Long-Term Care Settings

Vaccines

are a critically important tool for reducing morbidity and mortality among older residents in long-term care settings, including skilled nursing care centers, assisted living communities, and post-acute care facilities. In an effort to maximize immunization rates in the nation's long-term care settings, **The Gerontological Society of America** convened a 1-day stakeholder meeting focused on successes and needs in immunization practice for long-term care staff and residents.

Learn more at:
https://navp.org/images/navp/PDF/ImmunizRatesWP_FNL.pdf

The Gerontological Society of America gratefully acknowledges the financial support of Sanofi Pasteur for the development of a meeting, white paper, and this infographic.

Long-Term Care Residents

4 million people are admitted to long-term care facilities each year

+ Increased management of chronic and acute health conditions needed



More than half of adults in assisted living communities are **85** years of age or older

Disease Impact

Influenza and pneumonia are the **8th** leading cause of deaths among Americans

90% of those deaths occur in people

65 years of age or older

Risk of hospitalization for pneumonia is **30 times higher** for long-term care residents than risk for adults living in the community

Shingles occur in: **1 in 3** adults aged **50+** and **1 in 2** adults aged **85+**



aged 50+



aged 85+

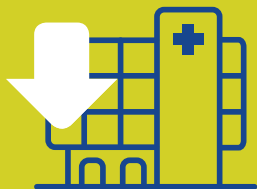


Immunity declines with age The body is more susceptible to developing an infectious disease and having more serious sequelae when that occurs

Charting a Path to Increase Immunization Rates in the Post-Acute and Long-Term Care Settings

Benefits of Vaccination in Older Adults

Decreased risk of hospitalization



Reduced exposure to other pathogens, invasive treatments, and disruptions that come with acute care

Very effective formulations available to overcome age related decline in immunity

Recommended for staff & residents by the CDC

Challenges with Vaccinating in Long-Term Care

1 **Organizational barriers**, including fostering a culture of immunization starting with leaders and administrators



3 **Managing costs** and optimizing billing for vaccines

2 **Obtaining informed consent** for vaccinations from residents and staff members



4 **Maintaining high levels of motivation** among vaccine champions

Prioritized Strategies to Improve Immunization Rates

Increase use of **mandatory staff vaccination policies**

1

Make vaccination **condition of hire**

2

Implement **mandatory resident vaccination policies** across all long-term care settings

3

Create **financing tip sheets** (eg, roster billing, best practices, algorithms, calculator of outbreak costs)

4

Examine **tools and resources** for opportunities to weave immunizations into other priorities for post-acute and long-term care facilities

5

