

# Rise to Immunize™

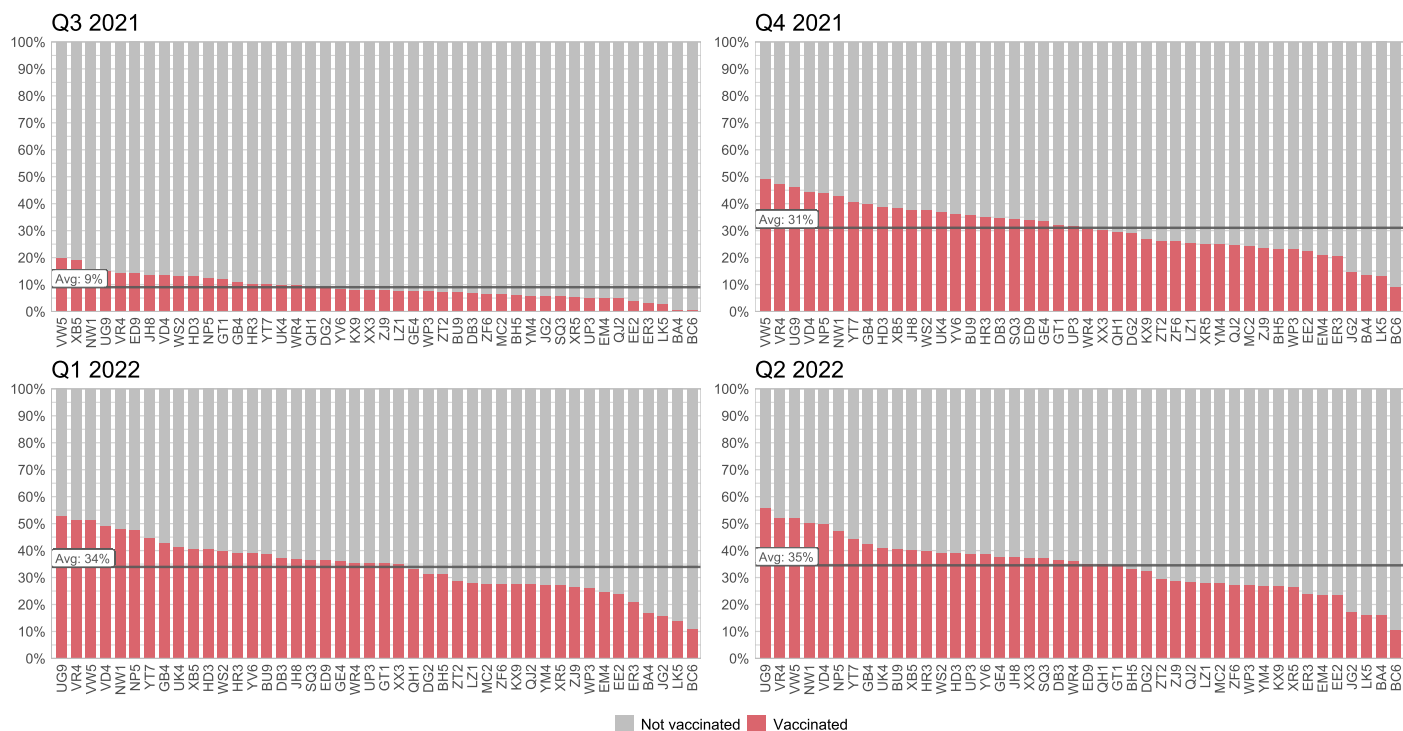
## Blinded Comparative Report

August 31, 2022

### Influenza (M1)

#### Intervention

#### Measurement Year 2021 (All 4 quarters reported)



This Q2 2022 report marks the end of our first full measurement year of the campaign. Now that we have complete data for Measurement Year 2021 (MY 2021), we see that the average influenza vaccination rate across all organizations this past flu season was 35%. This is 5% lower than the average of the last cumulative measurement year (MY 2020).

One reason for this decrease may be that the MY 2021 data did not have as long to mature compared to 2019 and 2020 Baseline data. Delayed reports from pharmacies and state registries could have led to under-reporting of flu vaccines. Another reason may be that flu vaccines rates are just lower this year overall compared to last year.

#### Top 5 Highest Influenza Vaccination Rates in Q2 2022

Org	Rank	Rate
UG9	1	56.0%
VR4	2	52.3%
VW5	3	52.1%
NW1	4	50.5%
VD4	5	50.1%

#### Top 5 Most Improved Orgs by Rank

# of spots moved from Q2 2021 to Q2 2022

Org	Increase in Rank
UK4	10
XB5	9
YT7	6
UG9	4
WS2	4

#### Top 5 Orgs with Largest Increase (or Smallest Decrease) in Rate

Change from Q2 2021 to Q2 2022

Org	Change in Rate
UG9	1.3%
BA4	0.0%
YT7	-0.4%
XB5	-1.2%
UK4	-1.4%

### Top 5 Highest Vaccination Rates in Q2 2022

- Congratulations to the 5 organizations with the highest influenza vaccination rates in Q2 2022! UG9, VR4, VW5, and VD4 remain in the top from last quarter, and end MY 2021 with the 5 highest influenza vaccination rates of all participating organizations.

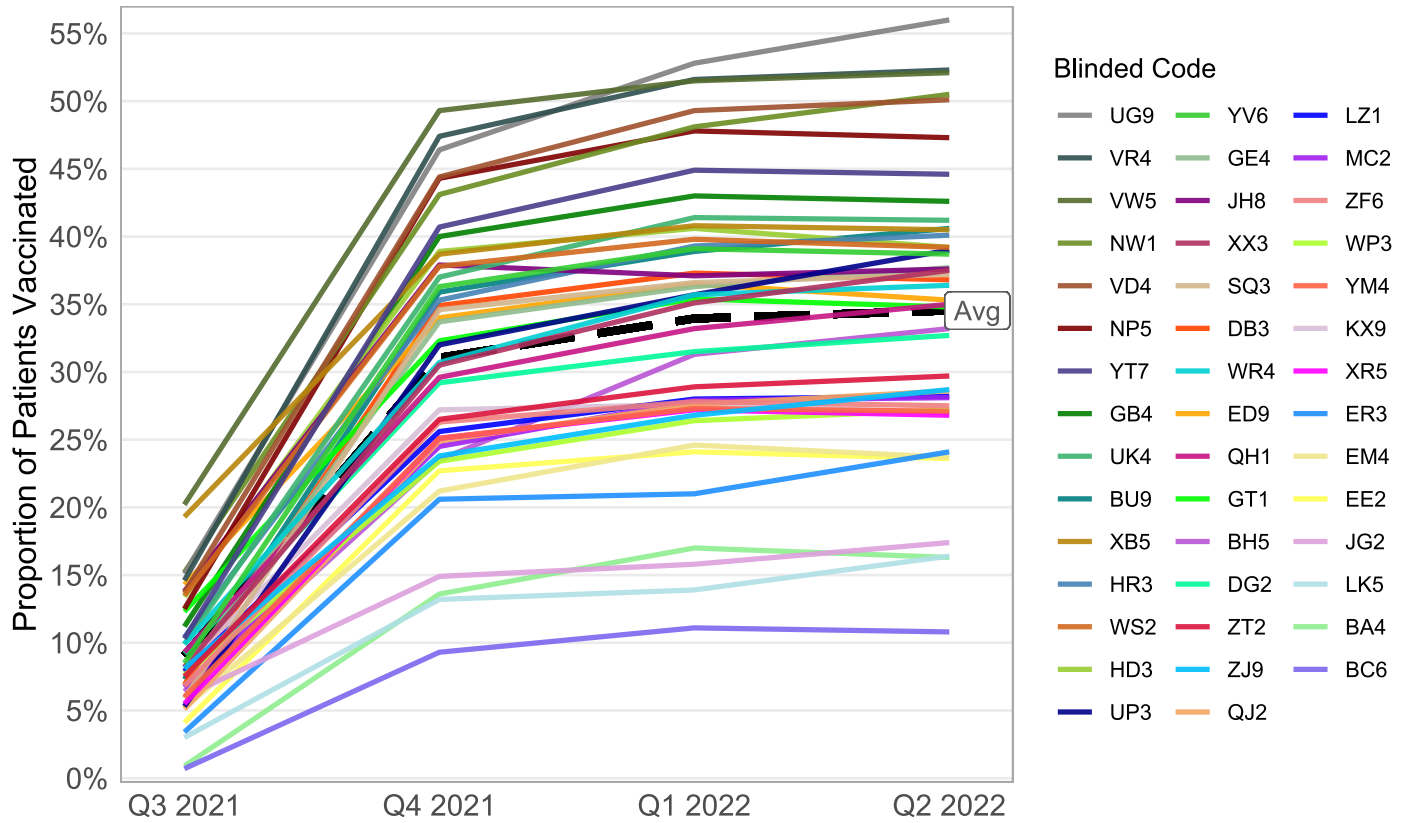
### Top 5 Most Improved Orgs by Rank

- Congratulations to the 5 organizations whose rank increased the most from Q2 2021 to Q2 2022! UK4 moved up enough spots to crack the top 10, with XB5 close behind.

### Top 5 Orgs with Largest Increase (or Smallest Decrease) in Rate

- These organizations had the smallest decrease in influenza rate compared to Q2 2021. UG9 increased their rate by 1.3% in a year that saw an overall decrease in flu vaccination rates.

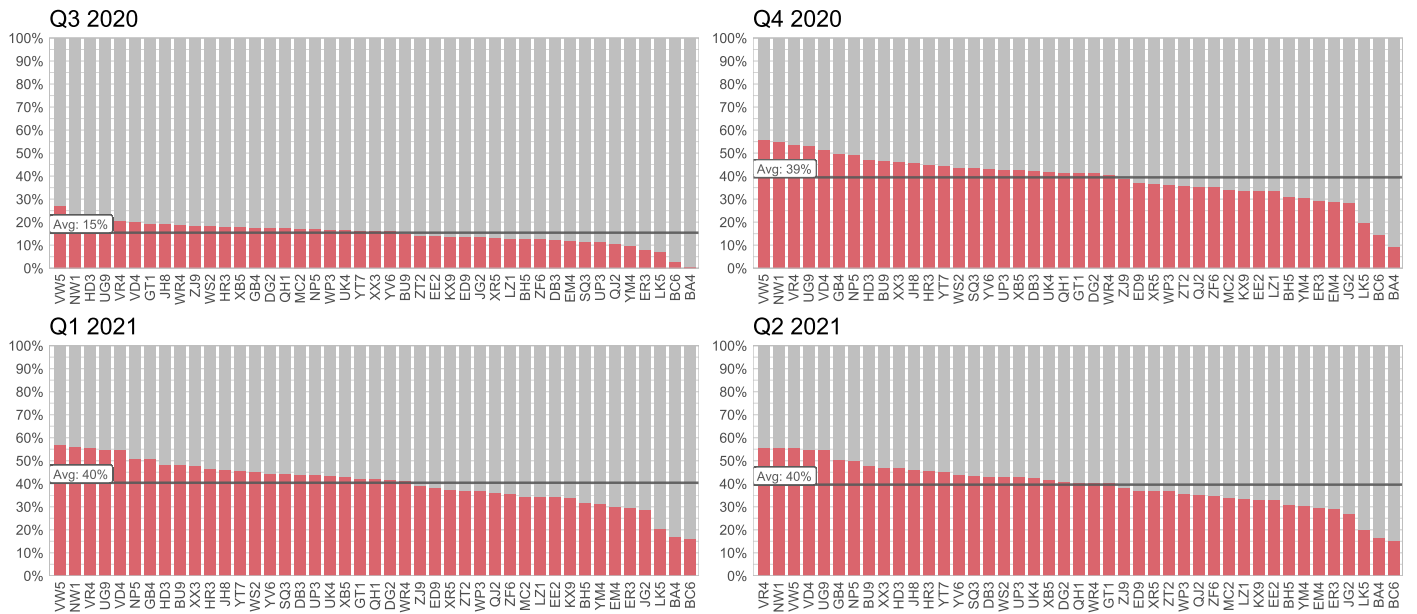
## Influenza vaccination rates over time by organization



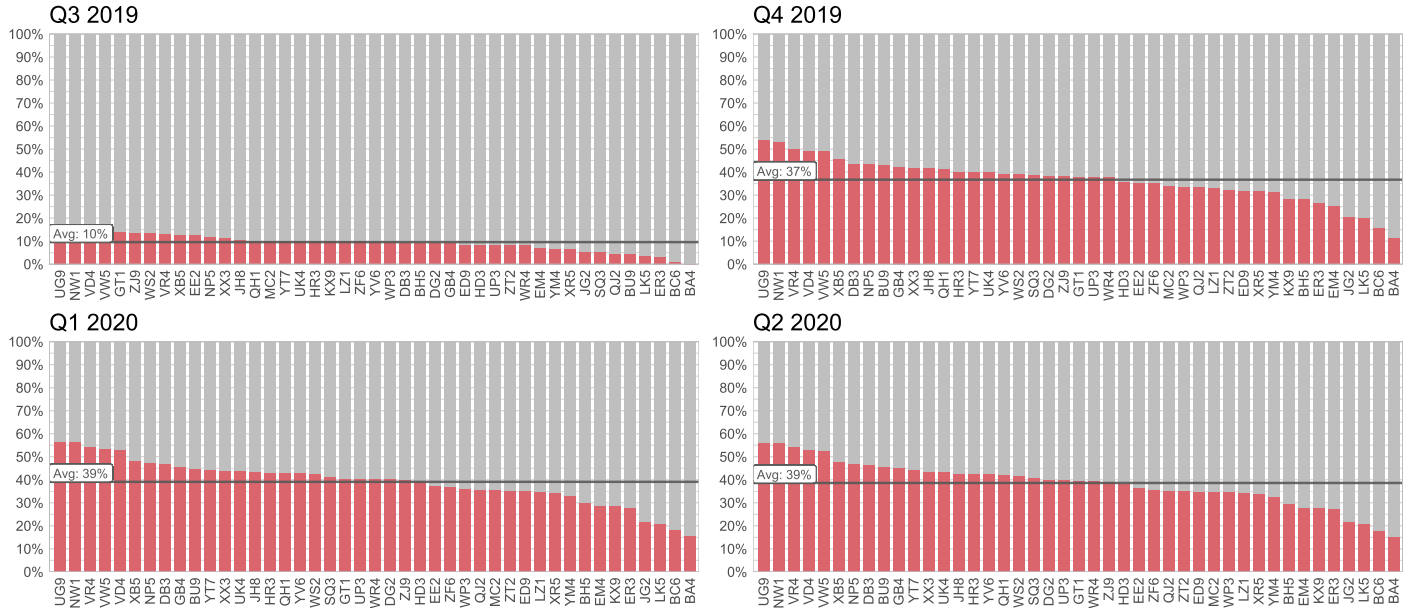
# Influenza (M1)

## Baseline

### Measurement Year 2020 (Intra-COVID)



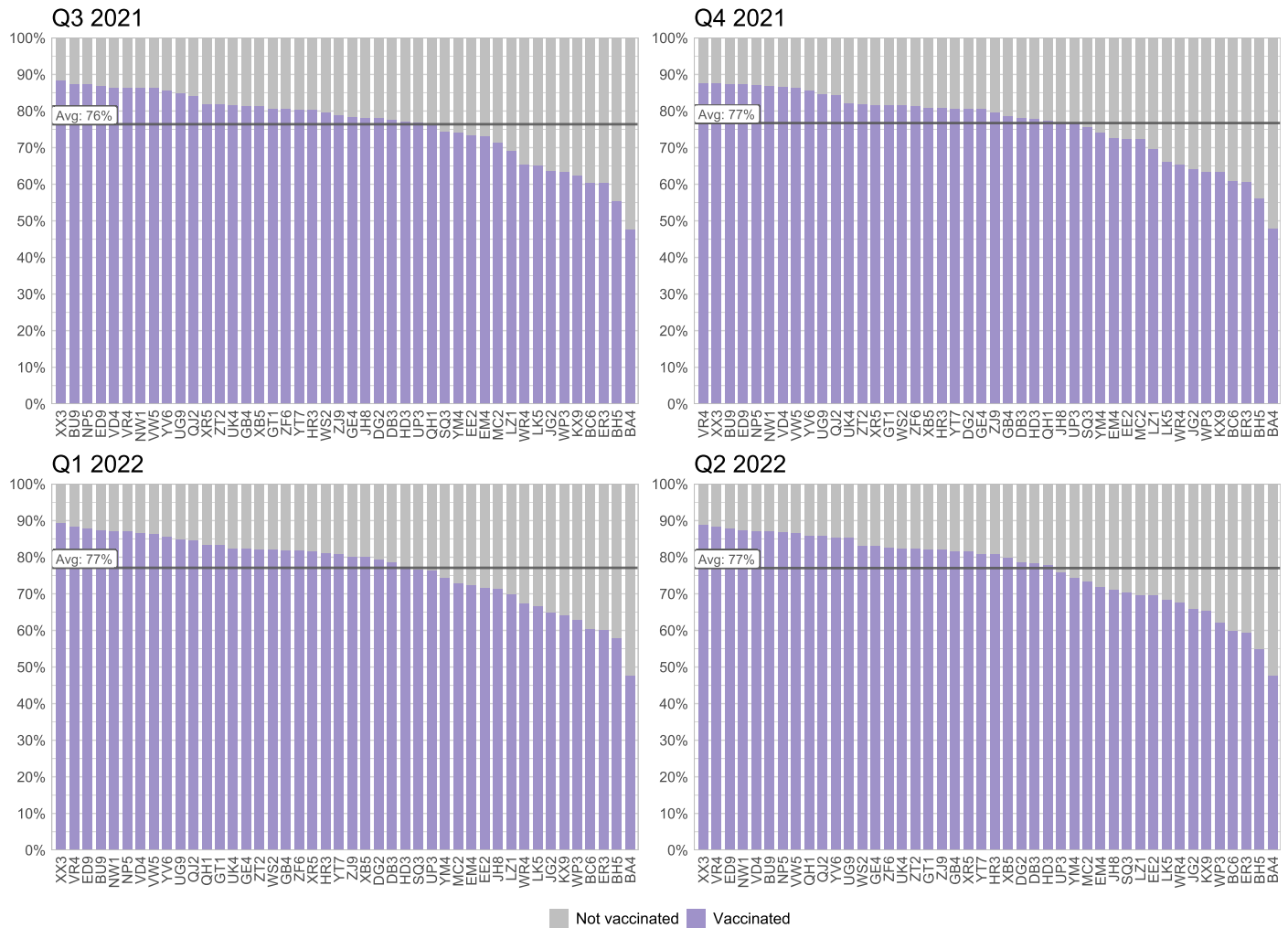
### Measurement Year 2019 (Pre-COVID)



# Pneumococcal (M2)

## Intervention

### Measurement Year 2021 (All 4 quarters reported)



The average pneumococcal vaccination rate across organizations decreased by 1% in Q2 2022 compared to Q2 2021 (78% vs. 79%).

The next report (Q3 2022) will be the first that uses the campaign's new pneumococcal criteria (any *conjugate* pneumococcal vaccine instead of any pneumococcal vaccine). We expect that, while this change will drop the rates across all organizations, it will also be a great opportunity to see real-time growth over the next 3 years as organizations implement the new CDC guidelines.

#### Top 5 Highest Pneumococcal Vaccination Rates in Q2 2022

Org	Rank	Rate
XX3	1	88.8%
VR4	2	88.4%
ED9	3	87.9%
NW1	4	87.3%
VD4	5	87.2%

#### Top 5 Most Improved Orgs by Rank

# of spots moved from Q2 2021 to Q2 2022	
Org	Increase in Rank
QH1	17
NW1	7
XX3	6
DG2	5
VW5	4

#### Top 5 Orgs with Largest Increase (or Smallest Decrease) in Rate

Change from Q2 2021 to Q2 2022	
Org	Change in Rate
QH1	8.0%
KX9	4.0%
DG2	3.6%
JG2	3.3%
WR4	2.8%

#### Top 5 Highest Vaccination Rates in Q2 2022

- Congratulations to the 5 organizations with the highest pneumococcal vaccination rates in Q1 2022! XX3 ends Measurement Year 2021 as the top performer, with VR4 close behind. VD4 has cracked the top 5, while ED9 and NW1 retained their top 5 spots.

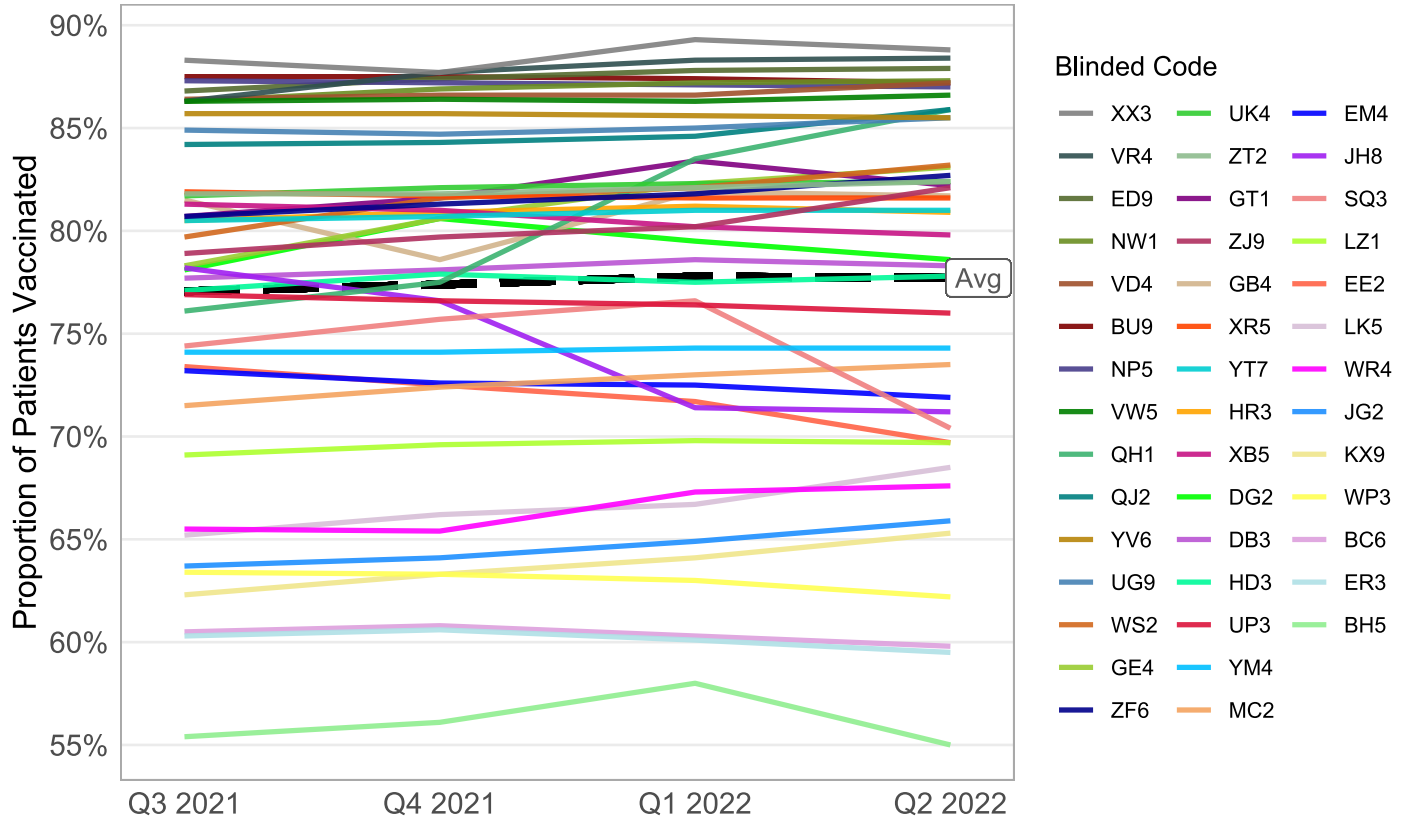
**Top 5 Most Improved Orgs by Rank**

- QH1 has shown tremendous growth in rank compared to Q2 2021. XX3 climbed from #5 in MY 2020 to #1 in MY 2021. NW1 was #11 and climbed to #4.

**Top 5 Orgs with Largest Increase (or Smallest Decrease) in Rate**

- QH1 had a large increase in rate—they increased their rate from 78% in Q2 2021 to 86% in Q2 2022! KX9, DG2, JG2, and WR4 also increased their rates by 3% to 4%.

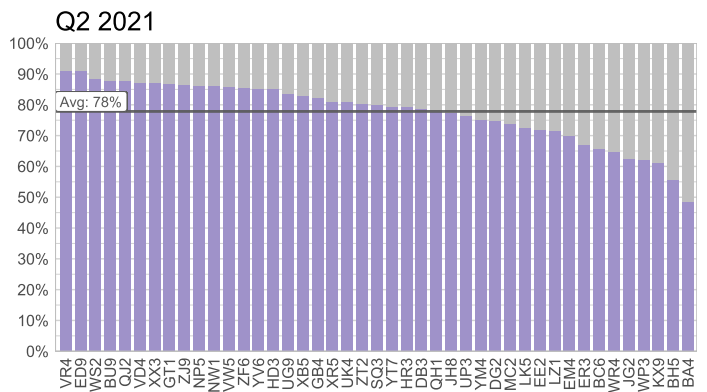
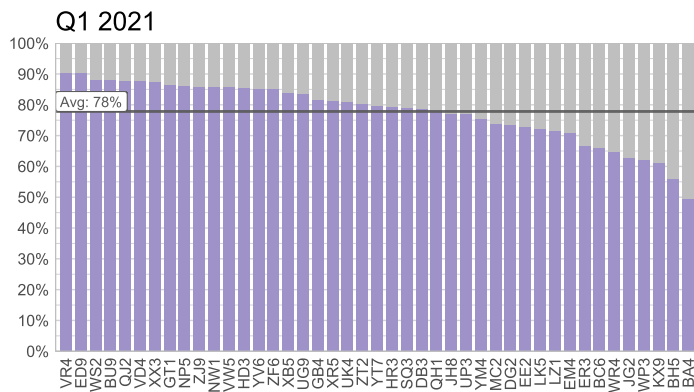
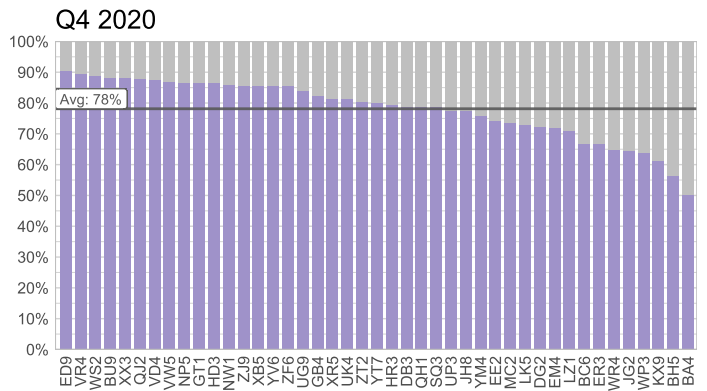
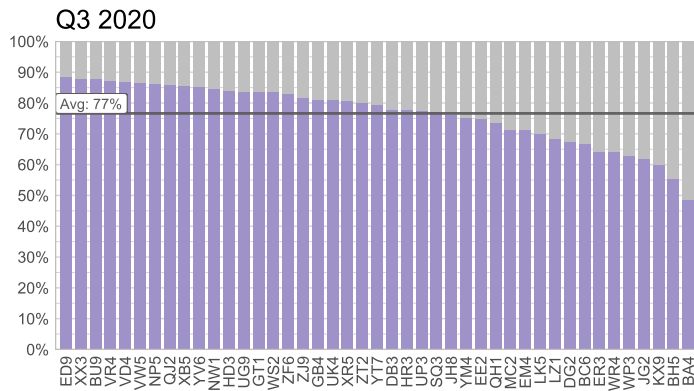
**Pneumococcal vaccination rates over time by organization**



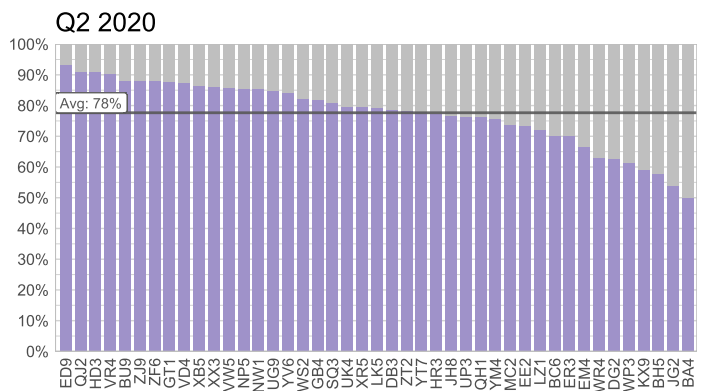
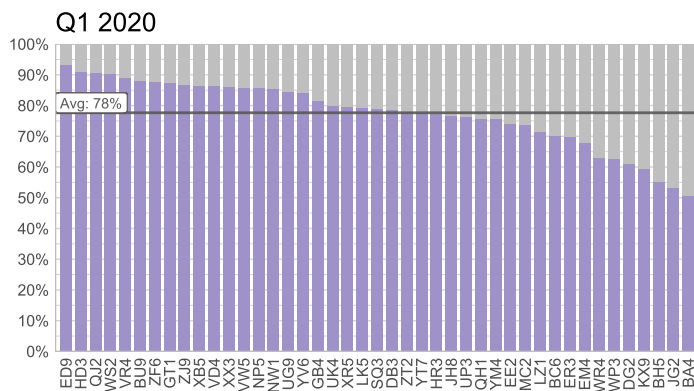
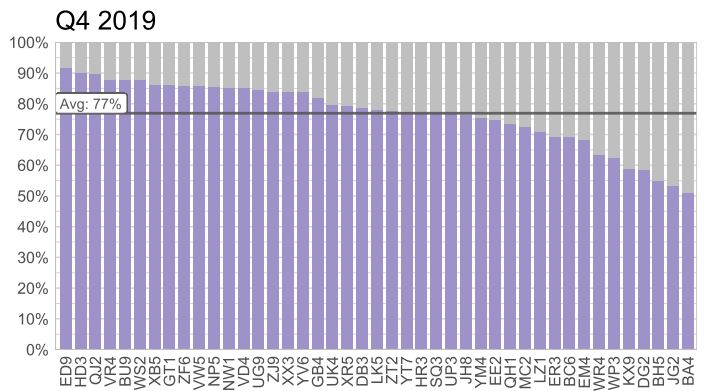
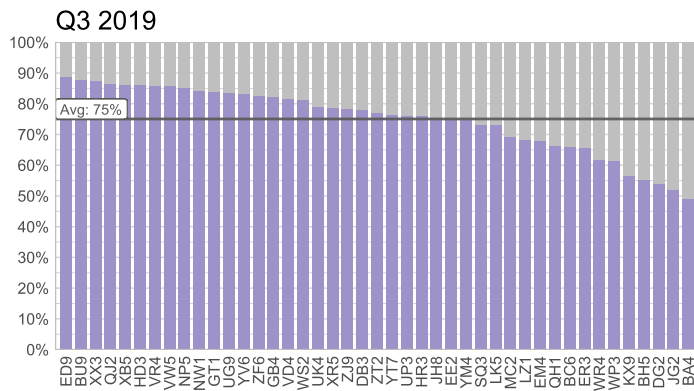
# Pneumococcal (M2)

## Baseline

### Measurement Year 2020 (Intra-COVID)



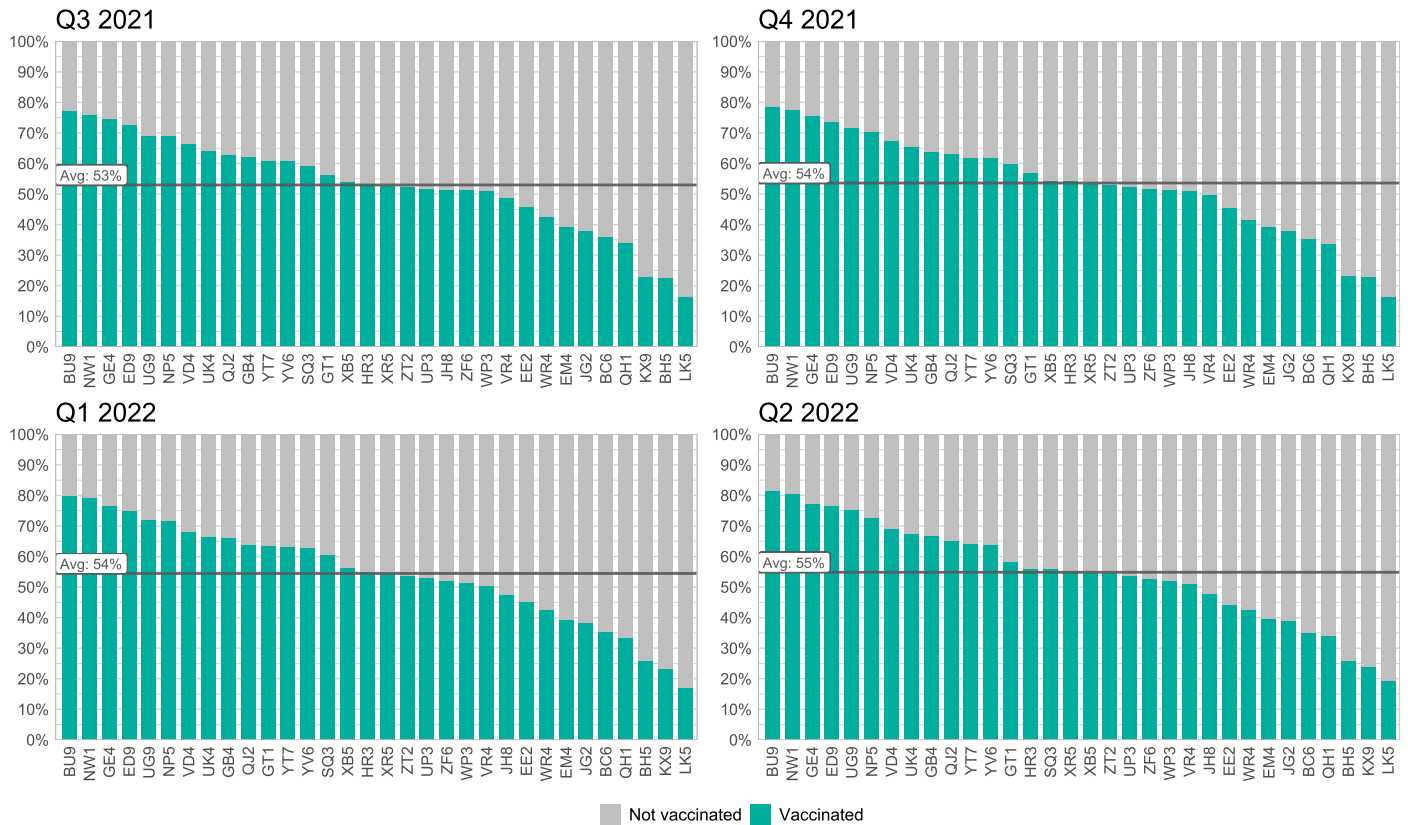
### Measurement Year 2019 (Pre-COVID)



# Td/Tdap (M3)

## Intervention

### Measurement Year 2021 (All 4 quarters reported)



Td/Tdap vaccination rates ranged from 19% to 81% across organizations in MY 2021. This was the widest range of all vaccinations in the campaign. The average Td/Tdap vaccination rate in Q2 2022 increased by about 1% compared to Q2 2021. It is encouraging to see that Td/Tdap vaccination rates have increased in just the first year of the campaign!

Top 5 Highest Td/Tdap Vaccination Rates in Q2 2022		
Org	Rank	Rate
BU9	1	81.5%
NW1	2	80.6%
GE4	3	77.3%
ED9	4	76.6%
UG9	5	75.3%

Top 5 Most Improved Orgs by Rank	
# of spots moved from Q2 2021 to Q2 2022	
Org	Increase in Rank
HR3	4
ZT2	4
UP3	2
WR4	1
BU9	0

Top 5 Orgs with Largest Increase (or Smallest Decrease) in Rate	
Change from Q2 2021 to Q2 2022	
Org	Change in Rate
UG9	4.0%
GB4	3.7%
BH5	3.5%
LK5	3.5%
QH1	3.2%

#### Top 5 Highest Vaccination Rates in Q1 2022

- Congratulations to the 5 organizations with the highest Td/Tdap vaccination rates in Q1 2022! BU9 and NW1—the top 2 performers—have eclipsed 80%! GE4, ED9 and UG9 round out the top 5.

#### Top 5 Most Improved Orgs by Rank

- Congratulations to the 5 organizations whose rank increased the most from Q2 2021 to Q2 2022! HR3 and ZT2 are steadily rising in the ranks.

#### Top 5 Orgs with Largest Increase (or Smallest Decrease) in Rate

- Congratulations to the 5 organizations with the highest increase in rate from Q2 2021 to Q2 2022!

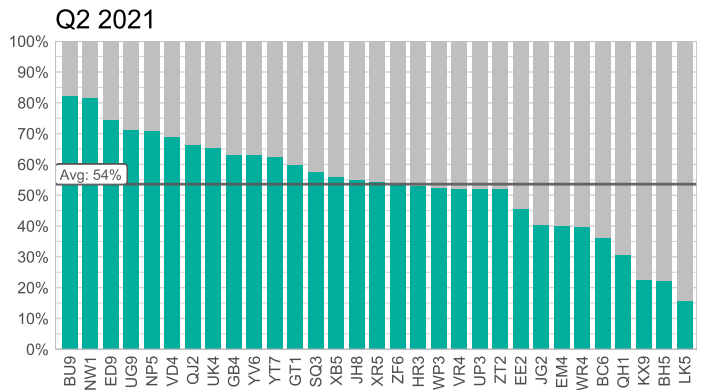
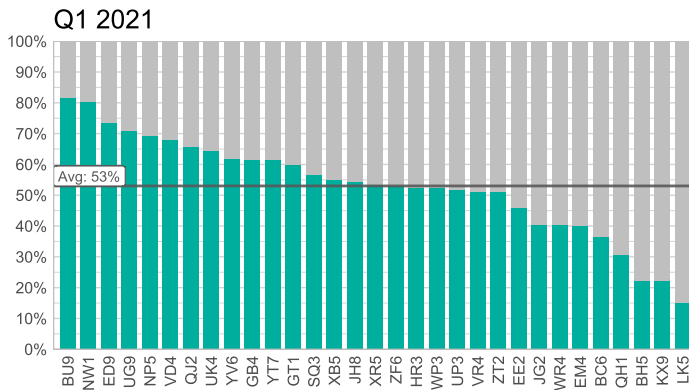
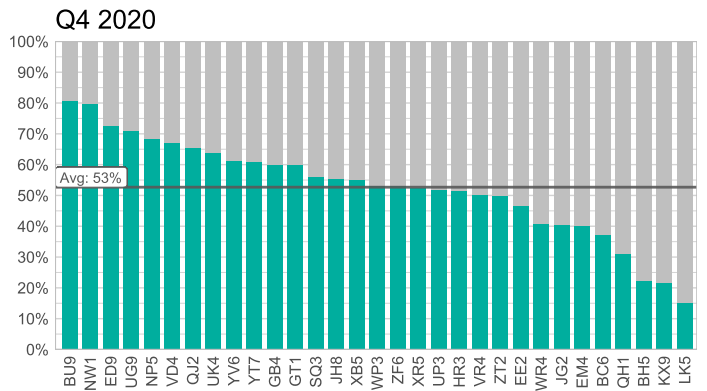
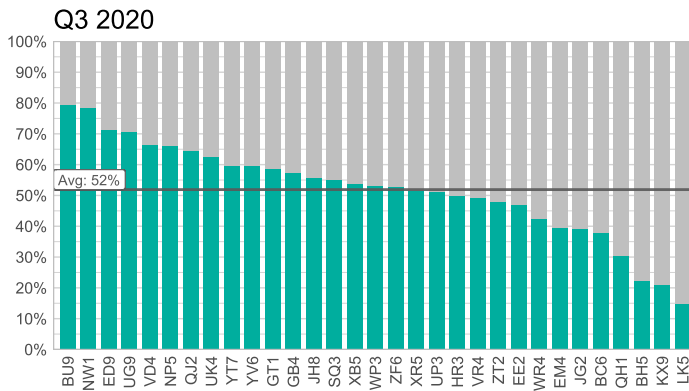




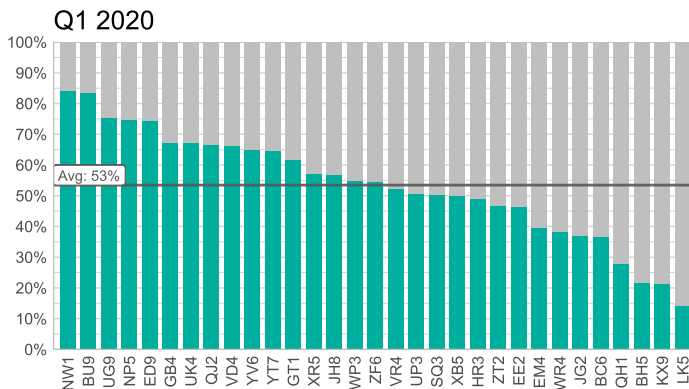
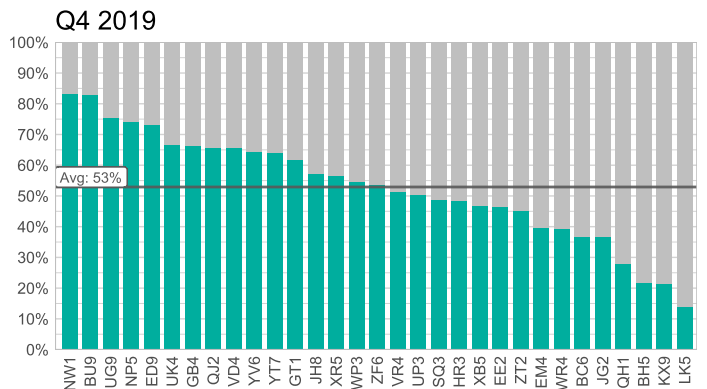
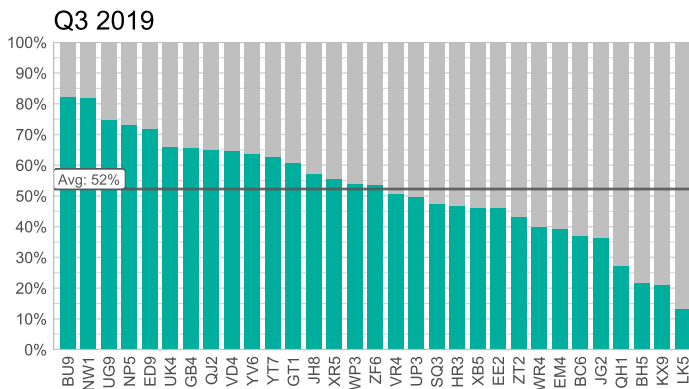
# Td/Tdap (M3)

## Baseline

### Measurement Year 2020 (Intra-COVID)



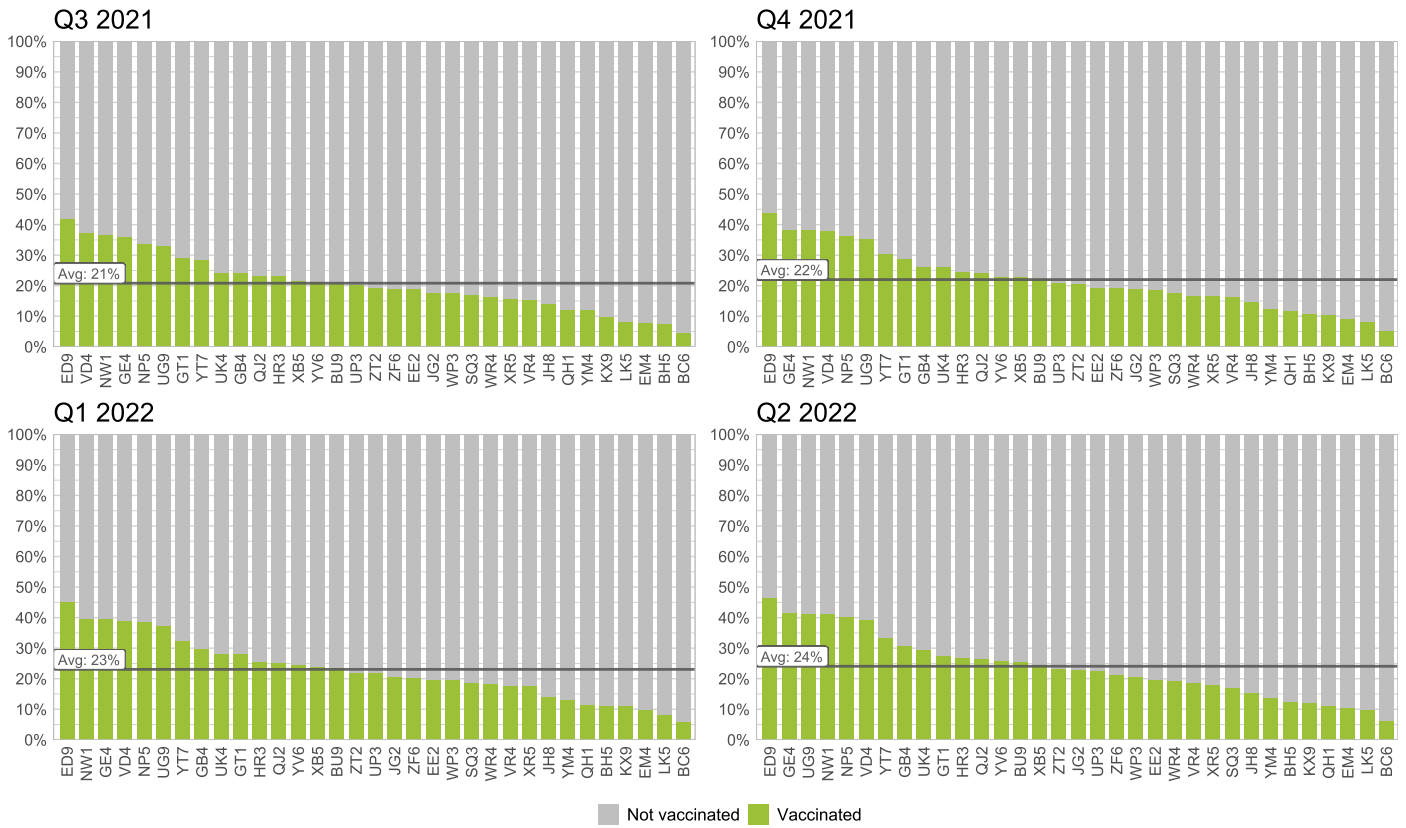
### Measurement Year 2019 (Pre-COVID)



# Zoster (M4)

## Intervention

### Measurement Year 2021 (All 4 quarters reported)



The average rate of zoster vaccination by the end of MY 2021 increased by 5% compared to last year (Q2 2021). Organizations continue to increase their documentation of the new recombinant vaccine. If the average increases by 5% in each year of the campaign, it will be almost 40% by the end of MY 2023!

Top 5 Highest Zoster Vaccination Rates in Q2 2022		
Org	Rank	Rate
ED9	1	46.5%
GE4	2	41.6%
UG9	3	41.2%
NW1	4	41.1%
NP5	5	40.2%

Top 5 Most Improved Orgs by Rank	
# of spots moved from Q2 2021 to Q2 2022	
Org	Increase in Rank
JG2	2
UG9	1
YV6	1
ZT2	1
BH5	1

Top 5 Orgs with Largest Increase (or Smallest Decrease) in Rate	
Change from Q2 2021 to Q2 2022	
Org	Change in Rate
NP5	10.7%
UG9	10.4%
ED9	9.2%
UK4	8.3%
GB4	8.2%

#### Top 5 Highest Vaccination Rates in Q1 2022

- Congratulations to the 5 organizations with the highest zoster vaccination rates in Q2 2022! ED9 ends MY 2021 as the top performer. GE4 has rapidly climbed to the #2 spot, with UG9, NW1, and NP5 close behind.

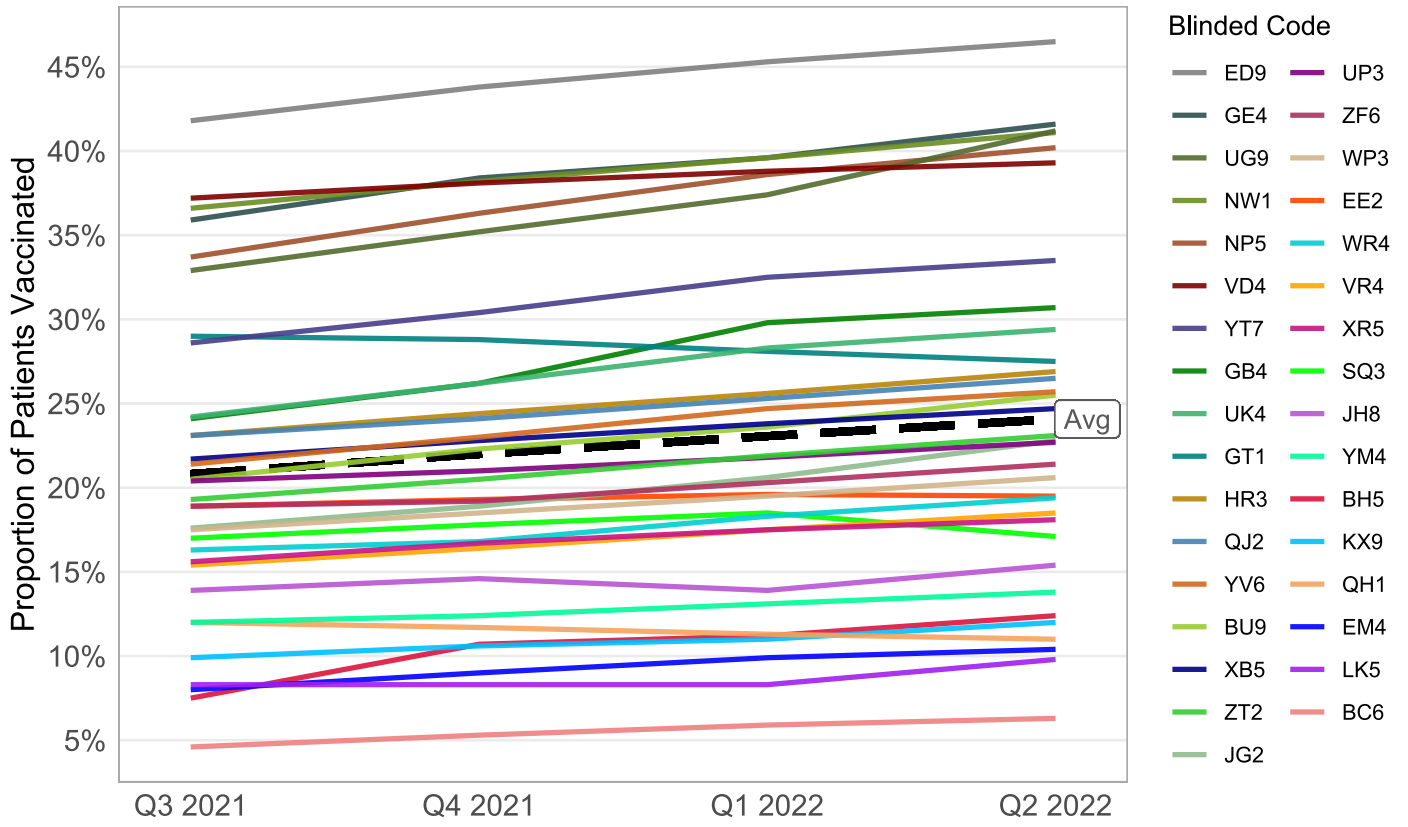
#### Top 5 Most Improved Orgs by Rank

- There wasn't much movement in terms of rank, but JG2 climbed the most spots this year compared to last!

#### Top 5 Orgs with Largest Increase (or Smallest Decrease) in Rate

- Congratulations to the 5 organizations with the highest increase in rate from Q1 2021 to Q1 2022! NP5 and UG9 have increased their rates by just over 10%, earning them spots in the top 5.

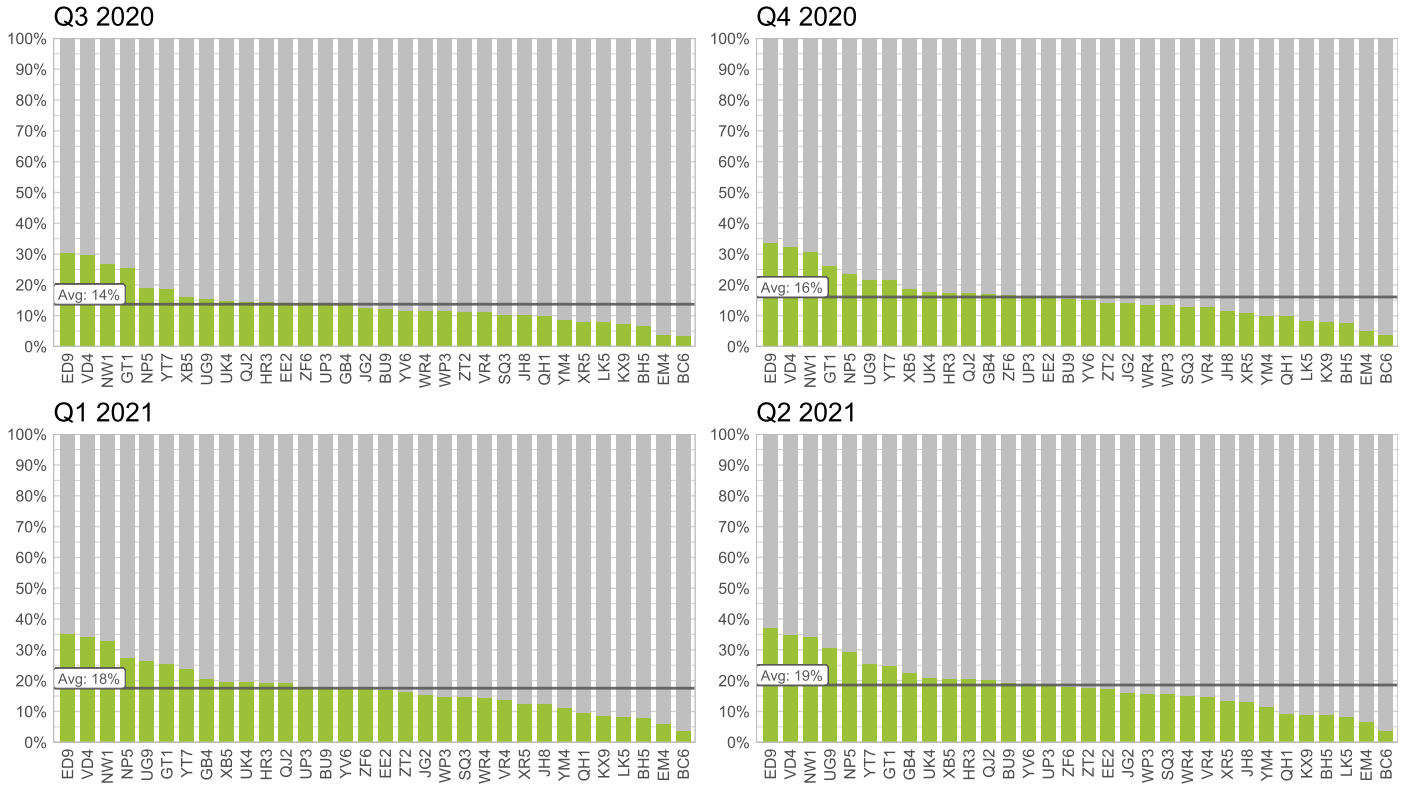
## Zoster vaccination rates over time by organization



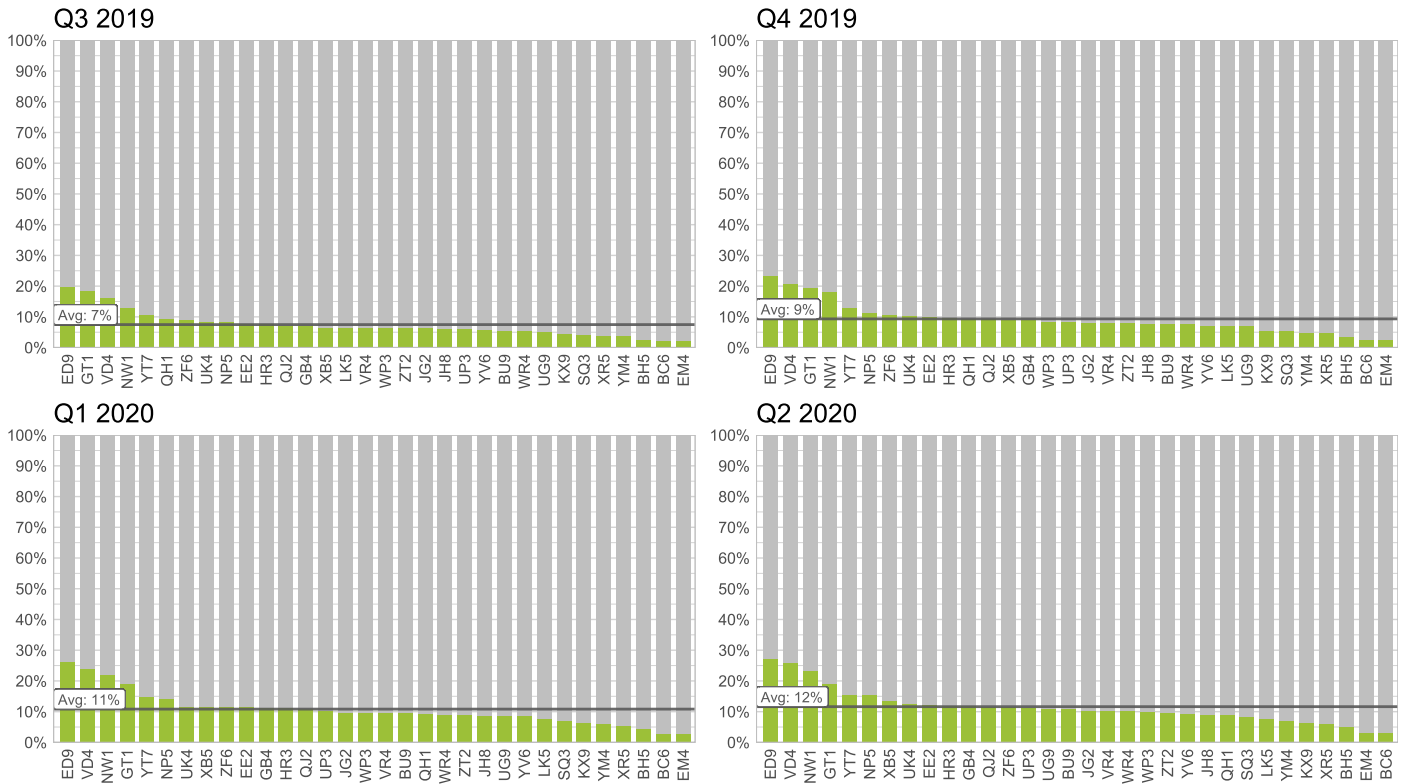
# Zoster (M4)

## Baseline

### Measurement Year 2020 (Intra-COVID)



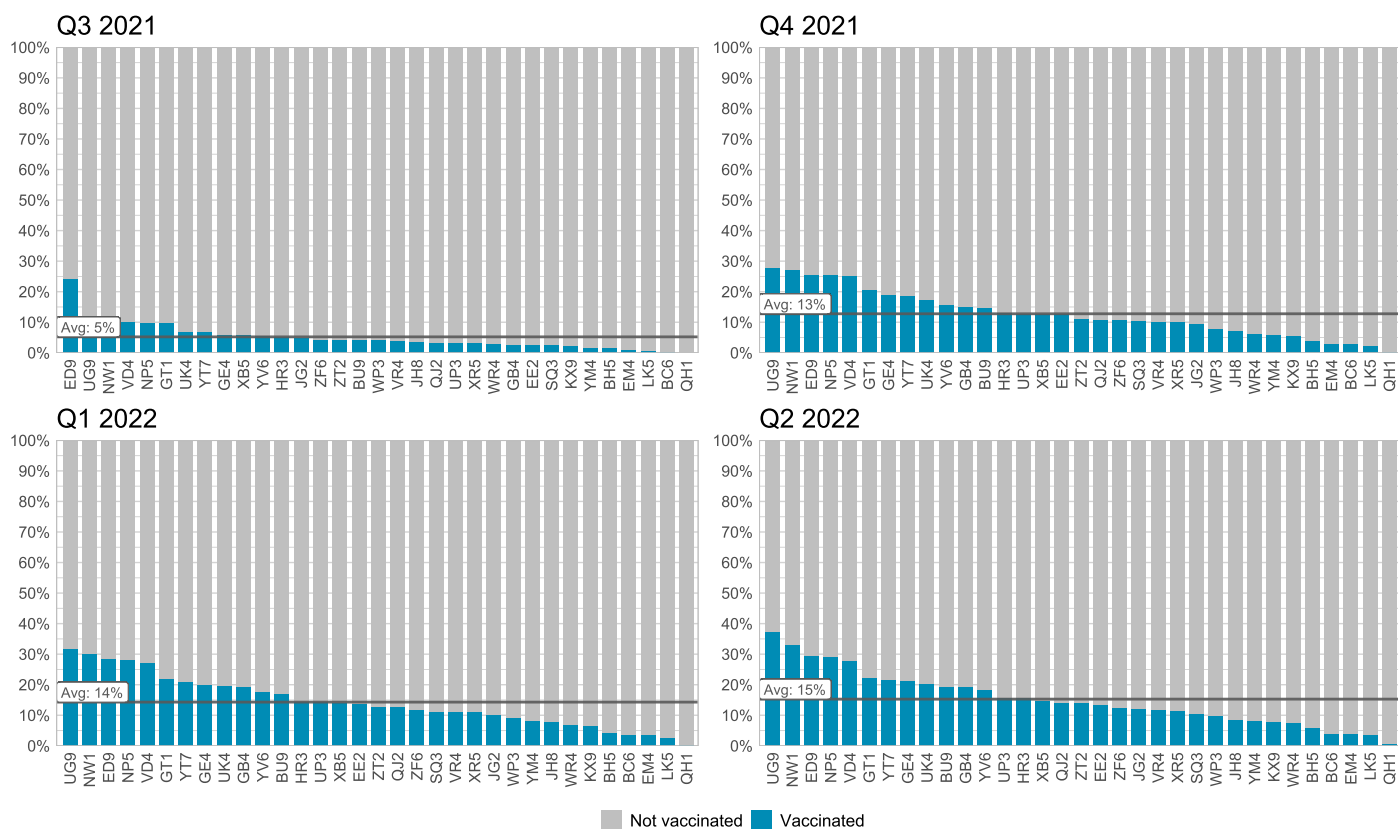
### Measurement Year 2019 (Pre-COVID)



# Bundle (M5)

## Intervention

### Measurement Year 2021 (All 4 quarters reported)



MY 2021 conclude with a 16% average across all organizations. Bundle rates increased by 3% this MY (Q2 2022 vs. Q2 2021), which is 1% more than last quarter's increase (Q1 2022 vs. Q1 2022). Next measurement year, we expect that Bundle rates will decrease due to the changes in the pneumococcal measure. This presents an opportunity to observe and measure growth in the Bundle measure as organizations implement the new pneumococcal measures.

**Top 5 Highest Bundle Vaccination Rates in Q2 2022**

Org	Rank	Rate
UG9	1	37.2%
NW1	2	33.1%
ED9	3	29.3%
NP5	4	29.1%
VD4	5	27.8%

**Top 5 Most Improved Orgs by Rank**

Org	Increase in Rank
ED9	3
GB4	3
HR3	2
JG2	2
UG9	1

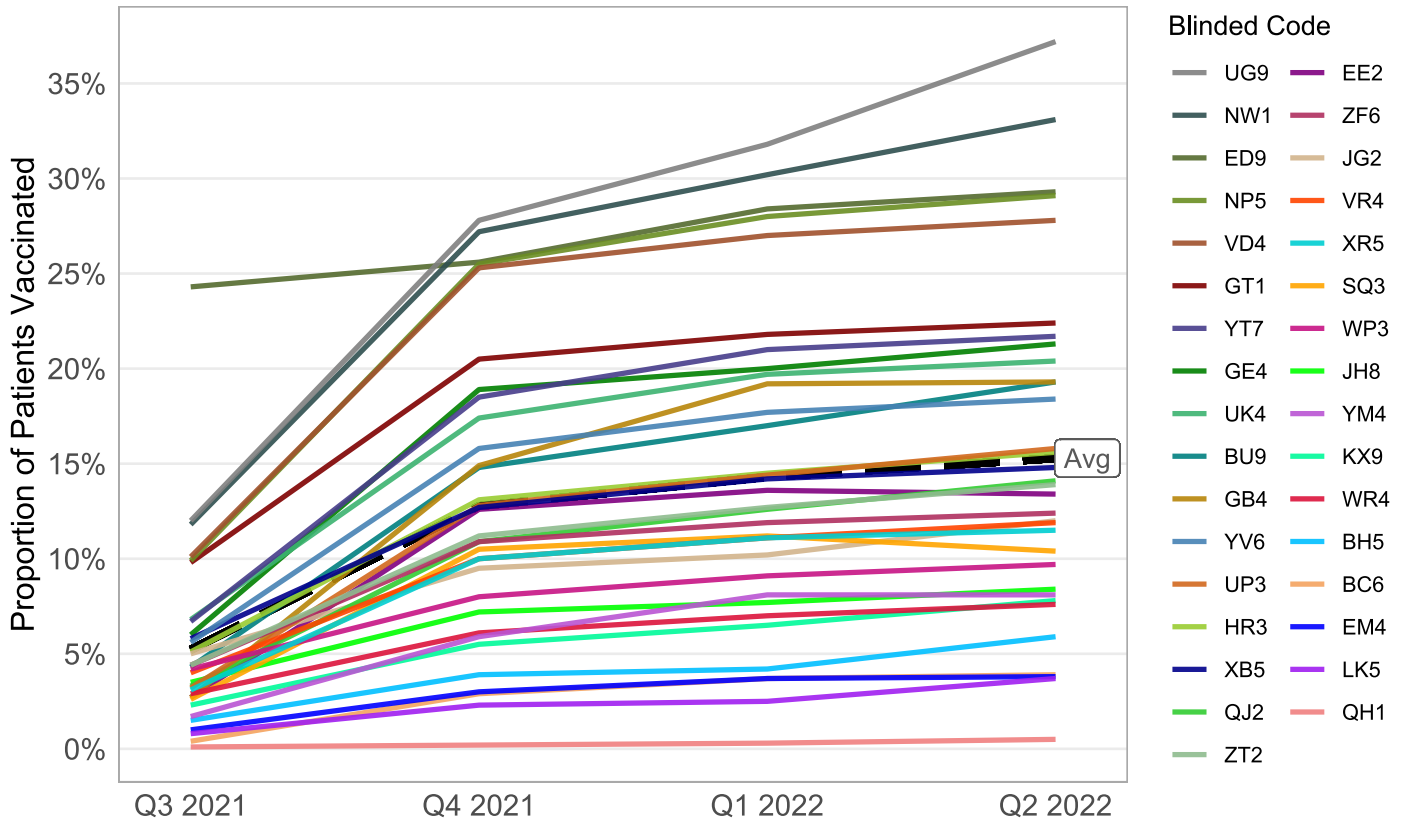
**Top 5 Orgs with Largest Increase (or Smallest Decrease) in Rate**

Org	Change in Rate
UG9	10.8%
ED9	7.3%
NP5	6.3%
GB4	5.2%
UK4	5.1%

#### Top 5 Highest Vaccination Rates in Q1 2022

- Congratulations to the 5 organizations with the highest bundle rates in Q4 2021! UG9—the top performer of MY 2021—is fast approaching the 40% milestone, with NW1 close behind, ED9, NP5, and VD4 round out the top 5 of MY 2021.

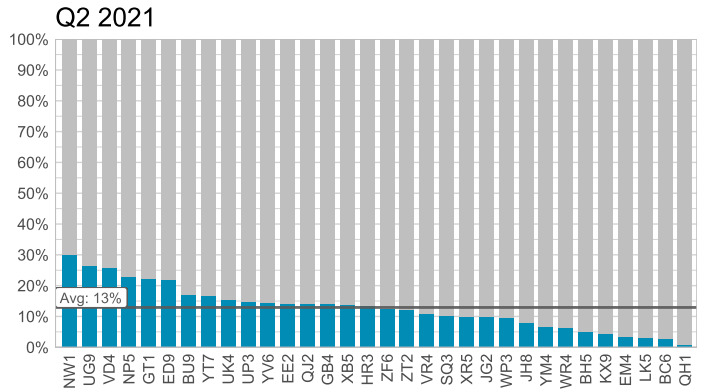
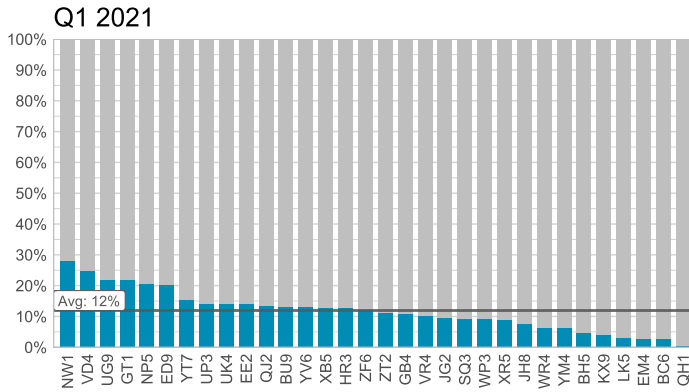
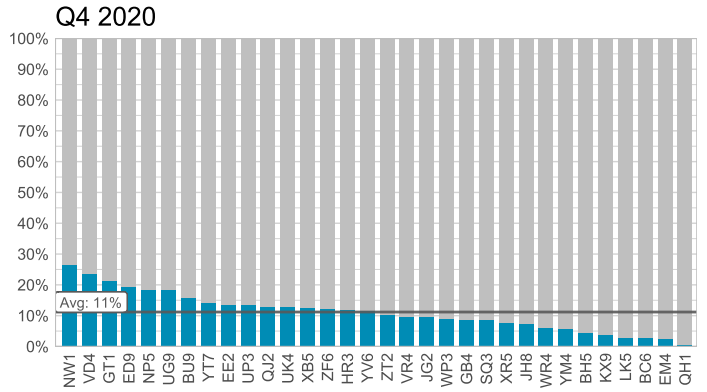
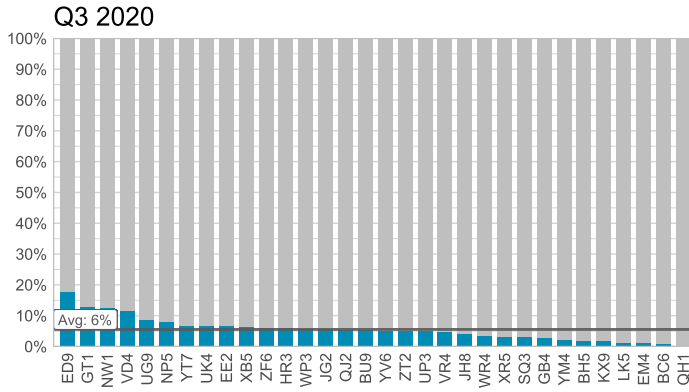
# Bundle vaccination rates over time by organization



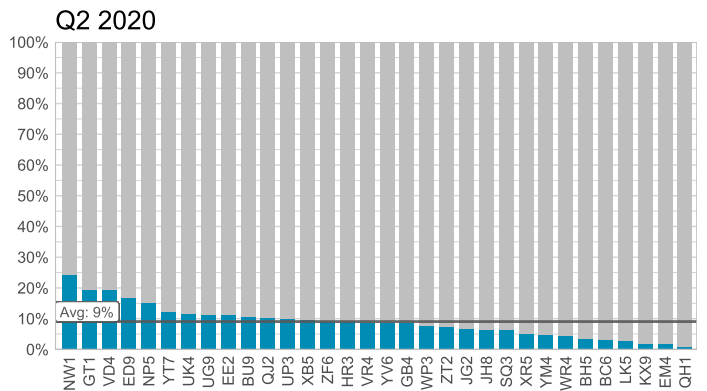
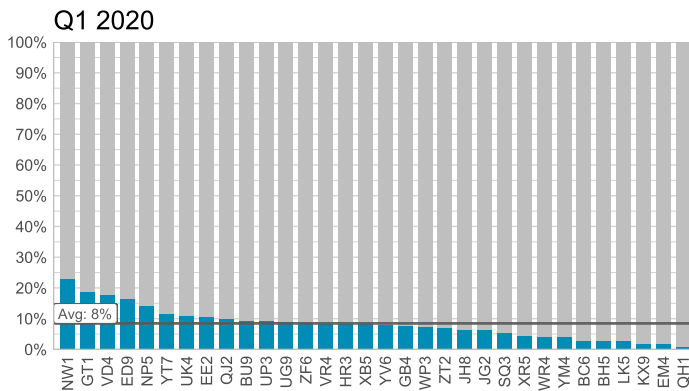
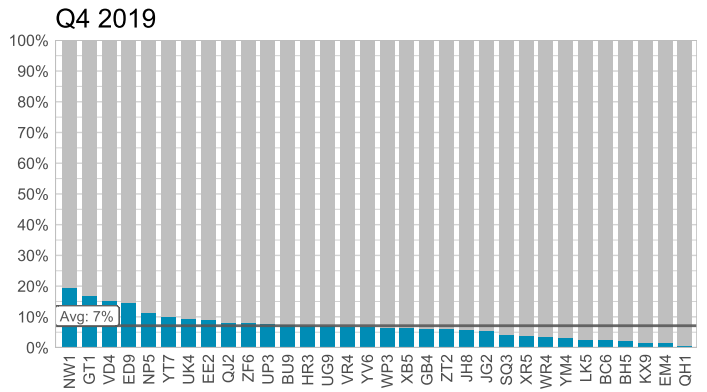
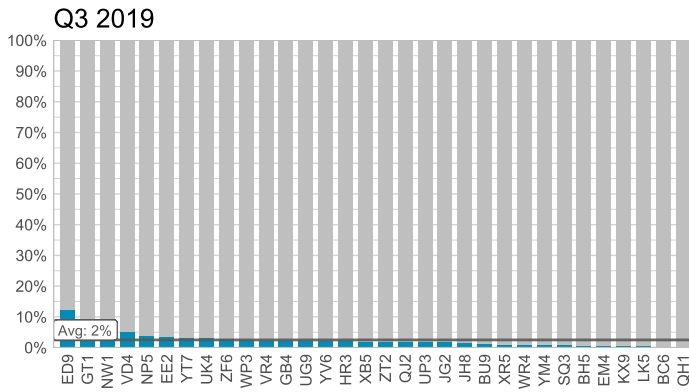
# Bundle (M5)

## Baseline

### Measurement Year 2020 (Intra-COVID)



### Measurement Year 2019 (Pre-COVID)



# Performance Summary

## Q2 2022: Summary Statistics

Vaccine	Average	SD	Min	25th pctl	Median	75th pctl	Max
Influenza	35.1%	10.8%	10.8%	27.5%	36.4%	40.5%	59.7%
Pneumo.	77.3%	10.1%	47.7%	70.4%	81.0%	85.5%	88.8%
Td/Tdap	54.5%	16.5%	19.2%	44.3%	54.7%	66.7%	81.5%
Zoster	24.1%	10.6%	6.3%	17.1%	22.8%	29.4%	46.5%
Bundle	15.3%	8.9%	0.5%	8.4%	13.9%	20.4%	37.2%

## Q2 2022: All Organizations

Org	Track	Influenza	Pneumo.	Td/Tdap	Zoster	Bundle
BA4	Basic	16.3%	47.7%	-	-	-
DB3	Basic	36.8%	78.3%	-	-	-
DG2	Basic	32.7%	78.6%	-	-	-
ER3	Basic	24.1%	59.5%	-	-	-
HD3	Basic	39.2%	77.8%	-	-	-
LZ1	Basic	28.2%	69.7%	-	-	-
MC2	Basic	28.1%	73.5%	-	-	-
VK4	Basic	59.7%	88.6%	-	-	-
VW5	Basic	52.1%	86.6%	-	-	-
WS2	Basic	39.2%	83.2%	-	-	-
XX3	Basic	37.5%	88.8%	-	-	-
ZJ9	Basic	28.7%	82.1%	-	-	-
BC6	Core	10.8%	59.8%	35.0%	6.3%	3.9%
BH5	Core	33.2%	55.0%	25.7%	12.4%	5.9%
BU9	Core	40.6%	87.2%	81.5%	25.5%	19.3%
ED9	Core	35.3%	87.9%	76.6%	46.5%	29.3%
EE2	Core	23.6%	69.7%	44.3%	19.5%	13.4%
EM4	Core	23.7%	71.9%	39.5%	10.4%	3.8%
GB4	Core	42.6%	81.7%	66.7%	30.7%	19.3%
GE4	Core	37.7%	83.1%	77.3%	41.6%	21.3%
GT1	Core	34.8%	82.2%	58.3%	27.5%	22.4%
HR3	Core	40.1%	80.9%	56.1%	26.9%	15.6%
JG2	Core	17.4%	65.9%	39.1%	22.8%	12.0%
JH8	Core	37.6%	71.2%	47.8%	15.4%	8.4%
KX9	Core	27.0%	65.3%	23.9%	12.0%	7.8%
LK5	Core	16.4%	68.5%	19.2%	9.8%	3.7%
NP5	Core	47.3%	87.0%	72.8%	40.2%	29.1%
NW1	Core	50.5%	87.3%	80.6%	41.1%	33.1%
QH1	Core	35.0%	85.9%	33.9%	11.0%	0.5%
QJ2	Core	28.6%	85.9%	65.1%	26.5%	14.1%



<b>Org</b>	<b>Track</b>	<b>Influenza</b>	<b>Pneumo.</b>	<b>Td/Tdap</b>	<b>Zoster</b>	<b>Bundle</b>
SQ3	Core	37.2%	70.4%	56.1%	17.1%	10.4%
UG9	Core	56.0%	85.5%	75.3%	41.2%	37.2%
UK4	Core	41.2%	82.4%	67.3%	29.4%	20.4%
UP3	Core	39.0%	76.0%	53.8%	22.7%	15.8%
VD4	Core	50.1%	87.2%	68.9%	39.3%	27.8%
VR4	Core	52.3%	88.4%	51.0%	18.5%	11.9%
WP3	Core	27.2%	62.2%	51.9%	20.6%	9.7%
WR4	Core	36.4%	67.6%	42.5%	19.4%	7.6%
XB5	Core	40.5%	79.8%	54.7%	24.7%	14.8%
XR5	Core	26.8%	81.6%	54.9%	18.1%	11.5%
YM4	Core	27.1%	74.3%	44.7%	13.8%	8.1%
YT7	Core	44.6%	81.0%	64.2%	33.5%	21.7%
YV6	Core	38.7%	85.5%	63.7%	25.7%	18.4%
ZF6	Core	27.5%	82.7%	52.8%	21.4%	12.4%
ZT2	Core	29.7%	82.4%	54.6%	23.1%	13.9%