

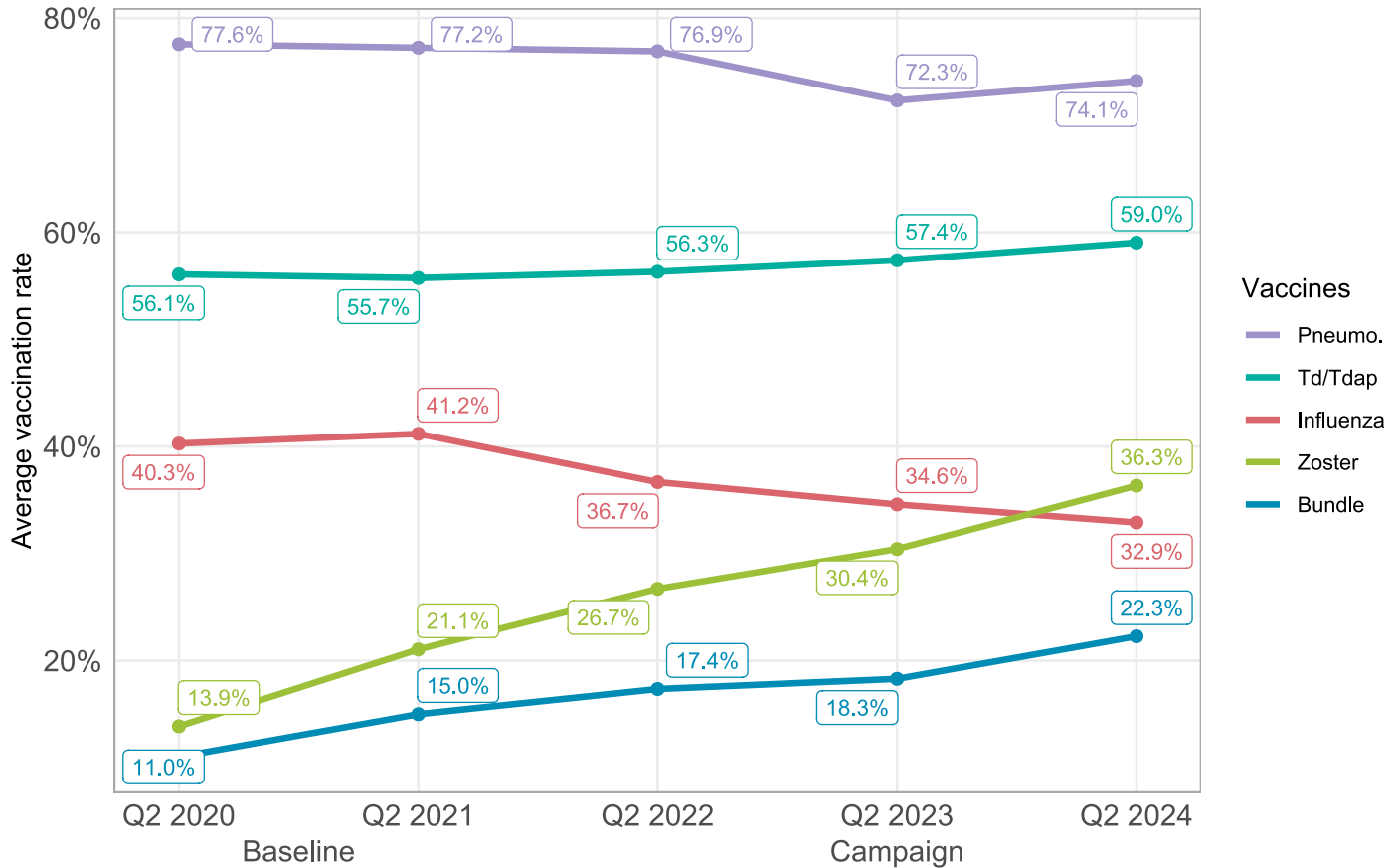
# Rise to Immunize™

## Blinded Comparative Report

August, 2024

### Group-weighted average of vaccination rates across all organizations, year-over-year

Cumulative Measurement Year (MY) rates as of Q2 in each year



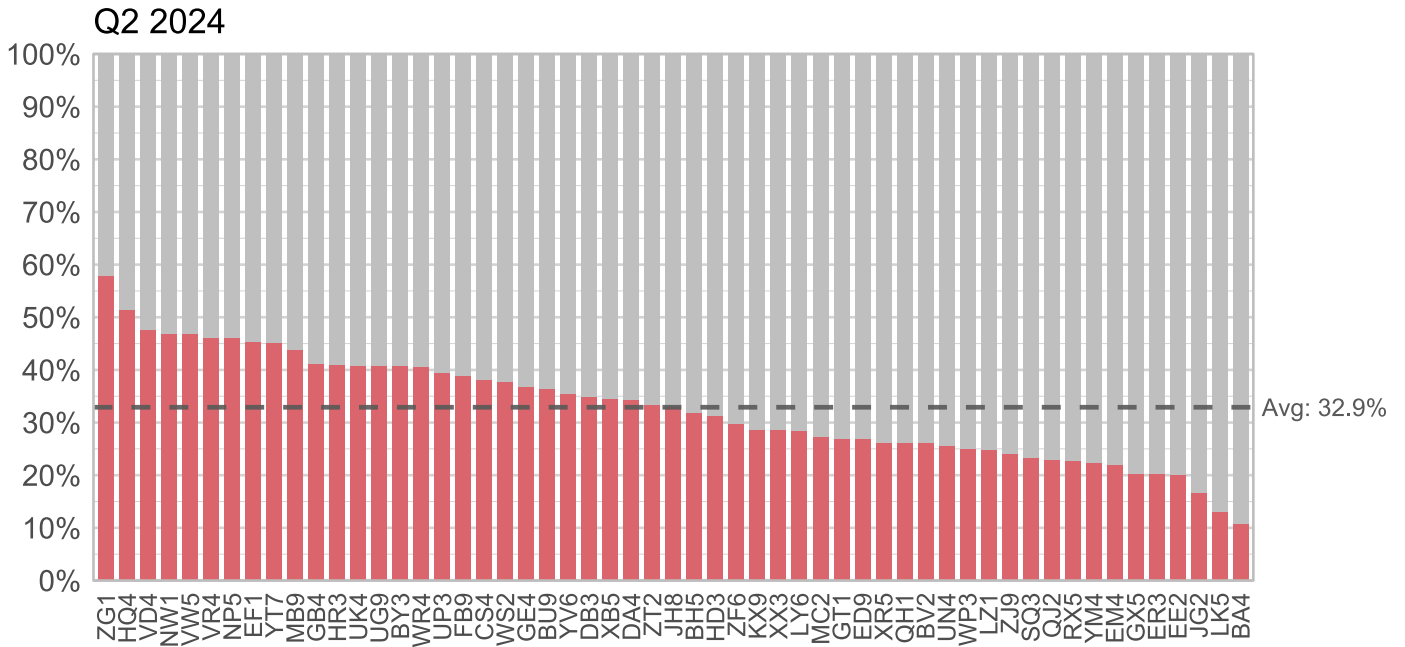
This plot compares the average rates of all Q2s in the campaign so far, including Q2 2024 (the most recent reporting quarter). Q2 rates represent a full year of RIZE data.

- The average pneumococcal vaccination rate across all organizations increased by 1.8% this year (Q2 2024) compared to last year (Q2 2023), an encouraging sign that groups have rapidly adapted to the new conjugate-only measure after a full year.
- The Td/Tdap vaccination rate has increased by 1.6%. Td/Tdap rates have continued to climb.
- Zoster vaccination rates increased by 5.9%, a larger increase than last year!
- The downward trend of influenza vaccination rates has persisted this measurement year.

# Influenza (M1)

## Intervention

Measurement Year 2023



### Top 5 Highest Influenza Vaccination Rates in Q2 2024

Org	Rank	Rate
ZG1	1	57.9%
HQ4	2	51.4%
VD4	3	47.7%
NW1	4	46.9%
VW5	5	46.9%

### Top 5 Most Improved Orgs by Rank

# of spots moved from Q2 2023 to Q2 2024

Org	Increase in Rank
GE4	11
FB9	9
EF1	8
ZT2	8
ZF6	8

### Top 5 Orgs with Largest Increase (or Smallest Decrease) in Rate

Change from Q2 2023 to Q2 2024

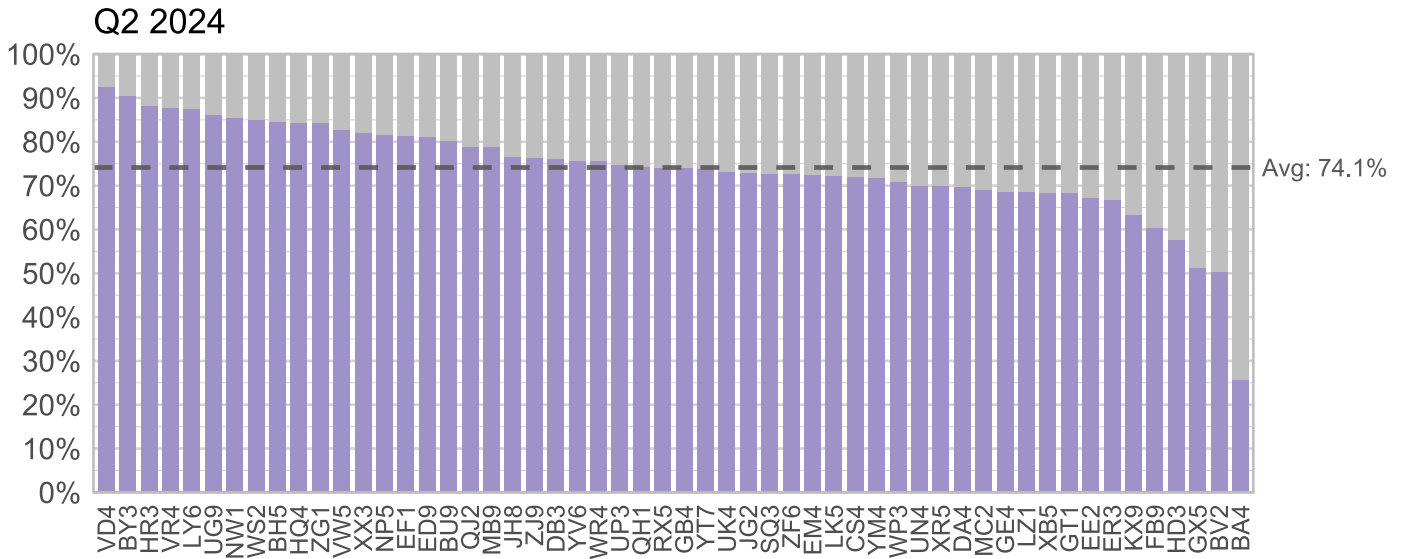
Org	Change in Rate
GX5	5.9%
FB9	5.6%
GE4	5.4%
RX5	3.6%
ZT2	3.2%

- Congratulations to the 5 organizations with the highest influenza vaccination rates this measurement year, ZG1, HQ4, VD4, NW1, and VW5! Despite the overall downward trend in influenza vaccination rates this year, these organizations have stood tall.
- GE4, GX5, FB9, RX5, and ZT2 saw the greatest improvements in influenza vaccination rates this year.

# Pneumococcal (M2)

## Intervention

Measurement Year 2023



**Top 5 Highest Pneumococcal Vaccination Rates in Q2 2024**

Org	Rank	Rate
VD4	1	92.6%
HR3	2	88.3%
VR4	3	87.7%
LY6	4	87.5%
UG9	5	86.3%

**Top 5 Most Improved Orgs by Rank**

# of spots moved from Q2 2023 to Q2 2024

Org	Increase in Rank
DB3	17
YM4	11
DA4	8
UK4	7
HR3	6

**Top 5 Orgs with Largest Increase (or Smallest Decrease) in Rate**

Change from Q2 2023 to Q2 2024

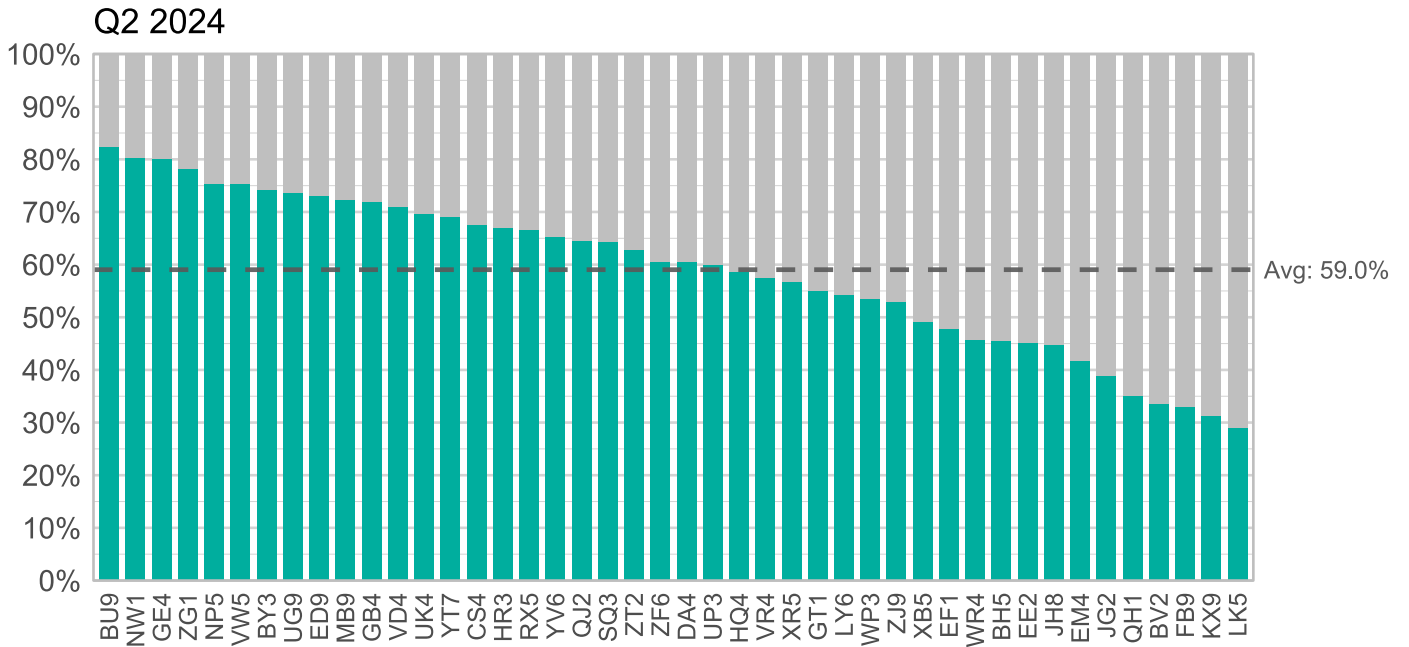
Org	Change in Rate
DB3	7.3%
YM4	6.9%
DA4	5.4%
UK4	4.2%
YT7	4.0%

- Congratulations to the organizations with the top 5 highest pneumococcal vaccination rates, VD4, HR3, VR4, LY6, and UG9! Our first organization has eclipsed 90%, with others close behind.
- DB3, DA4, YM4, UP3, UK4, and others continue to improve their pneumococcal vaccination rates.

# Td/Tdap (M3)

## Intervention

Measurement Year 2023



### Top 5 Highest Td/Tdap Vaccination Rates in Q2 2024

Org	Rank	Rate
BU9	1	82.4%
NW1	2	80.4%
GE4	3	80.2%
ZG1	4	78.2%
NP5	5	75.4%

### Top 5 Most Improved Orgs by Rank

# of spots moved from Q2 2023 to Q2 2024

Org	Increase in Rank
NP5	3
UG9	3
SQ3	3
VR4	3
RX5	2

### Top 5 Orgs with Largest Increase (or Smallest Decrease) in Rate

Change from Q2 2023 to Q2 2024

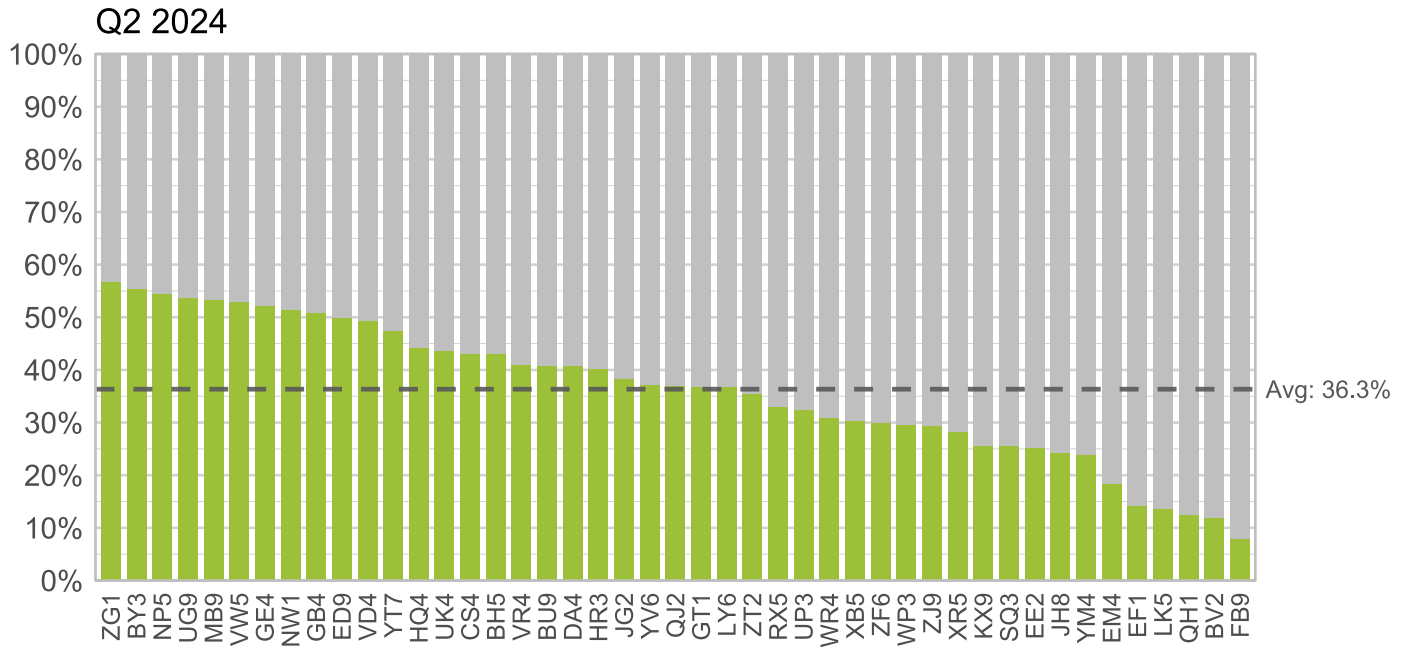
Org	Change in Rate
SQ3	6.7%
BV2	6.5%
RX5	6.1%
LK5	4.4%
VR4	4.2%

- Congratulations to the 5 organizations with the highest Td/Tdap vaccination rates this measurement year, BU9, NW1, GE4, ZG1, and NP5!
- SQ3, BV2, RX5, LK5, and others have continued to improve their Td/Tdap vaccination rates.

# Zoster (M4)

## Intervention

Measurement Year 2023



**Top 5 Highest Zoster Vaccination Rates in Q2 2024**

Org	Rank	Rate
ZG1	1	56.7%
NP5	2	54.6%
UG9	3	53.8%
MB9	4	53.3%
VW5	5	52.9%

**Top 5 Most Improved Orgs by Rank**  
# of spots moved from Q2 2023 to Q2 2024

Org	Increase in Rank
VR4	8
GB4	7
RX5	5
NP5	4
VW5	2

**Top 5 Orgs with Largest Increase (or Smallest Decrease) in Rate**

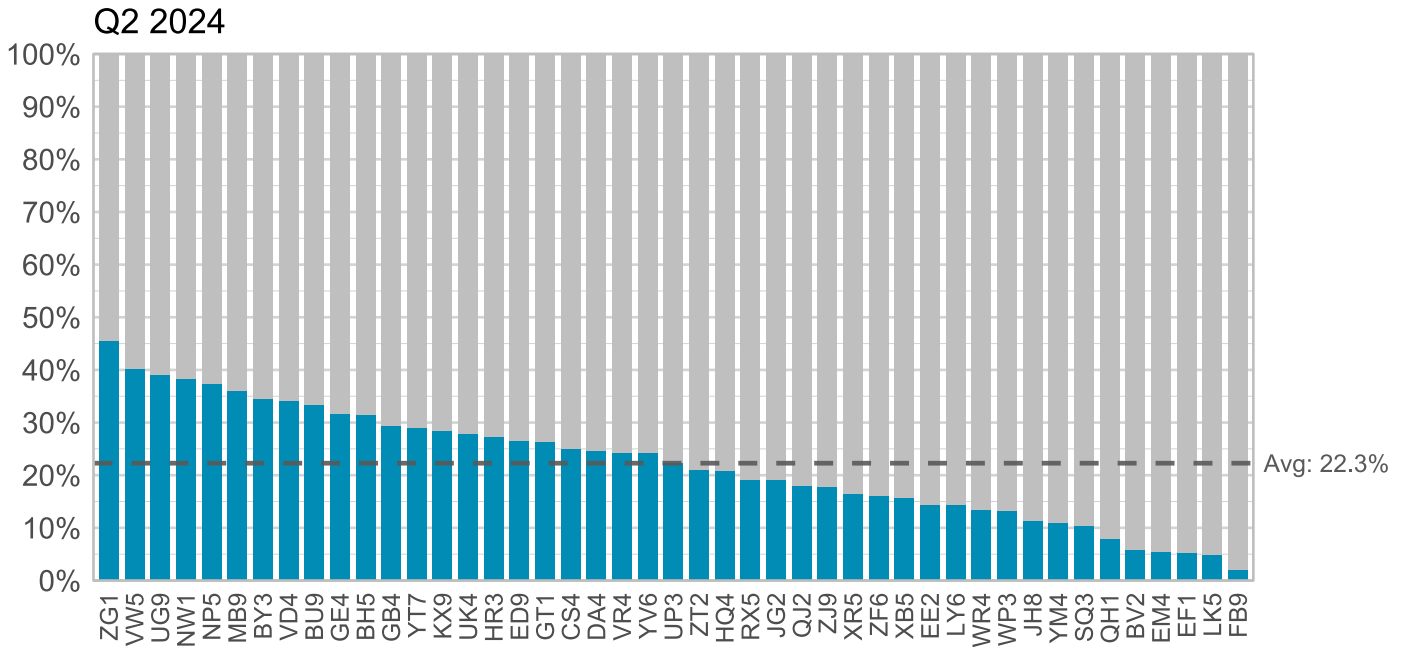
Org	Change in Rate
GB4	14.3%
VR4	12.2%
RX5	8.6%
YM4	8.3%
BU9	8.1%

- Congratulations to the 5 organizations with the highest zoster vaccination rates this measurement year, ZG1, NP5, UG9, MB9, and VW5!
- VR4, GB4 and others lead the pack in improving zoster vaccination rates.

# Bundle (M5)

## Intervention

Measurement Year 2023



**Top 5 Highest Bundle Vaccination Rates in Q2 2024**

Org	Rank	Rate
ZG1	1	45.6%
VW5	2	40.2%
UG9	3	39.2%
NW1	4	38.4%
NP5	5	37.5%

**Top 5 Most Improved Orgs by Rank**  
# of spots moved from Q2 2023 to Q2 2024

Org	Increase in Rank
GE4	11
BU9	7
RX5	7
KX9	6
GB4	5

**Top 5 Orgs with Largest Increase (or Smallest Decrease) in Rate**

Org	Change in Rate
GE4	13.4%
BU9	11.1%
KX9	9.6%
GB4	7.7%
RX5	7.0%

- Congratulations to the 5 organizations with the highest Bundle vaccination rates this measurement year! ZG1 and VW5 have eclipsed 40%.
- GE4, BU9, KX9 and others have shown rapid improvements in the Bundle measure.

# Performance Summary

## Q2 2024: All Organizations

Org	Track	Influenza	Pneumo.	Td/Tdap	Zoster	Bundle
BA4	Basic	10.9%	25.7%	-	-	-
DB3	Basic	34.9%	76.1%	-	-	-
ER3	Basic	20.3%	66.8%	-	-	-
GX5	Basic	20.3%	51.3%	-	-	-
HD3	Basic	31.4%	57.7%	-	-	-
LZ1	Basic	24.9%	68.6%	-	-	-
MC2	Basic	27.3%	69.1%	-	-	-
UN4	Basic	25.6%	70.1%	-	-	-
WS2	Basic	37.8%	85.0%	-	-	-
XX3	Basic	28.6%	82.0%	-	-	-
BH5	Core	31.9%	84.5%	45.5%	43.1%	31.5%
BU9	Core	36.5%	80.3%	82.4%	40.8%	33.4%
BV2	Core	26.2%	50.4%	33.7%	12.0%	5.8%
BY3	Core	40.8%	90.5%	74.3%	55.5%	34.6%
CS4	Core	38.1%	72.1%	67.7%	43.2%	25.0%
DA4	Core	34.3%	69.8%	60.5%	40.8%	24.6%
ED9	Core	26.9%	81.1%	73.1%	49.9%	26.6%
EE2	Core	20.1%	67.3%	45.2%	25.3%	14.4%
EF1	Core	45.4%	81.5%	47.9%	14.3%	5.3%
EM4	Core	22.1%	72.4%	41.7%	18.4%	5.5%
FB9	Core	38.9%	60.3%	33.1%	7.9%	2.0%
GB4	Core	41.2%	74.0%	72.0%	50.9%	29.5%
GE4	Core	36.8%	68.7%	80.2%	52.2%	31.8%
GT1	Core	27.0%	68.3%	55.0%	36.8%	26.4%
HQ4	Core	51.4%	84.4%	58.7%	44.2%	20.9%
HR3	Core	41.1%	88.3%	67.1%	40.2%	27.4%
JG2	Core	16.8%	72.9%	38.9%	38.4%	19.1%
JH8	Core	33.0%	76.7%	44.9%	24.3%	11.3%
KX9	Core	28.6%	63.3%	31.4%	25.7%	28.5%
LK5	Core	13.1%	72.3%	29.1%	13.7%	4.9%
LY6	Core	28.5%	87.5%	54.3%	36.8%	14.4%
MB9	Core	43.8%	79.0%	72.4%	53.3%	36.1%
NP5	Core	46.1%	81.6%	75.4%	54.6%	37.5%
NW1	Core	46.9%	85.6%	80.4%	51.5%	38.4%
QH1	Core	26.2%	74.3%	35.1%	12.6%	7.9%
QJ2	Core	23.0%	79.0%	64.6%	37.1%	18.0%
RX5	Core	22.8%	74.2%	66.7%	33.1%	19.1%
SQ3	Core	23.4%	72.8%	64.3%	25.7%	10.4%
UG9	Core	40.8%	86.3%	73.7%	53.8%	39.2%

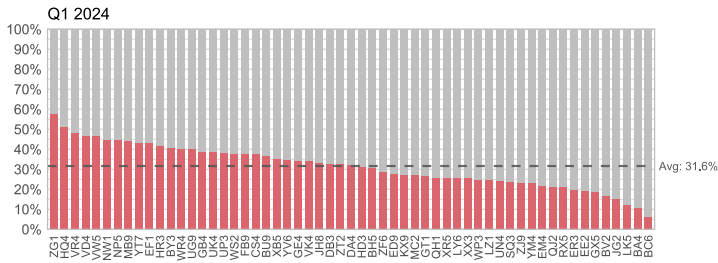
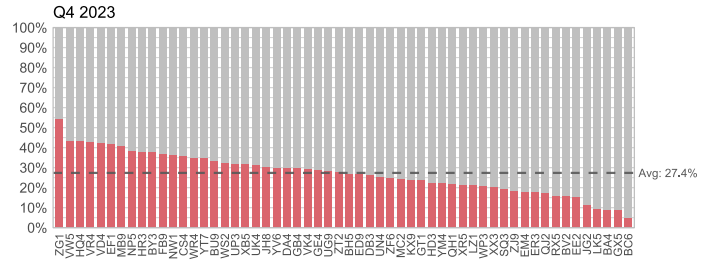
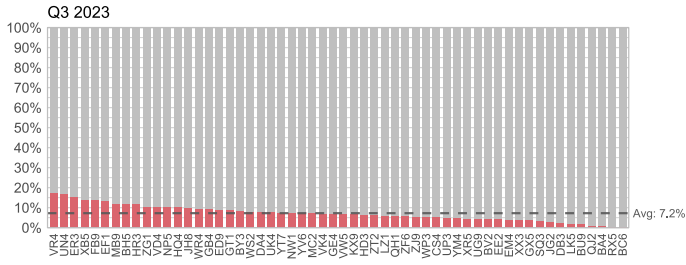
<b>Org</b>	<b>Track</b>	<b>Influenza</b>	<b>Pneumo.</b>	<b>Td/Tdap</b>	<b>Zoster</b>	<b>Bundle</b>
UK4	Core	40.8%	73.3%	69.8%	43.7%	28.0%
UP3	Core	39.5%	74.8%	60.0%	32.5%	22.5%
VD4	Core	47.7%	92.6%	71.1%	49.4%	34.2%
VR4	Core	46.2%	87.7%	57.6%	41.0%	24.3%
VW5	Core	46.9%	82.8%	75.4%	52.9%	40.2%
WP3	Core	25.1%	71.0%	53.5%	29.7%	13.3%
WR4	Core	40.7%	75.6%	45.8%	31.0%	13.4%
XB5	Core	34.5%	68.4%	49.2%	30.3%	15.8%
XR5	Core	26.3%	70.0%	56.8%	28.3%	16.5%
YM4	Core	22.4%	71.9%	48.0%	23.9%	11.0%
YT7	Core	45.2%	73.8%	69.2%	47.5%	29.1%
YV6	Core	35.5%	75.8%	65.4%	37.2%	24.3%
ZF6	Core	29.9%	72.7%	60.5%	30.1%	16.1%
ZG1	Core	57.9%	84.4%	78.2%	56.7%	45.6%
ZJ9	Core	24.1%	76.4%	52.9%	29.4%	17.9%
ZT2	Core	33.4%	84.4%	62.9%	35.6%	21.0%



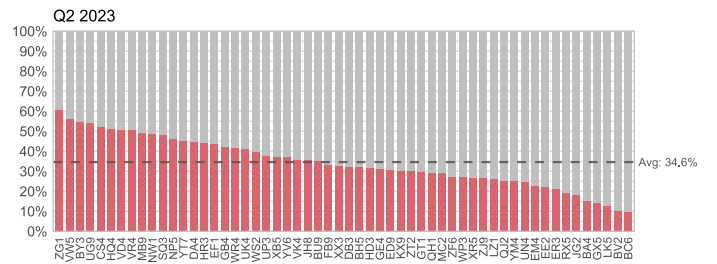
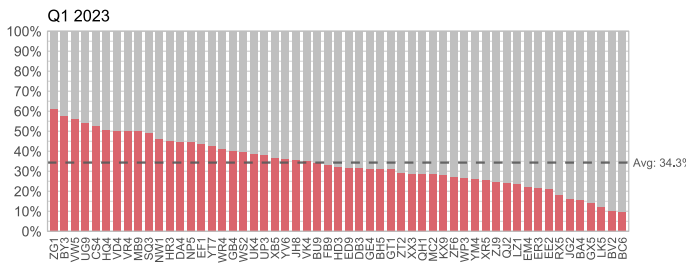
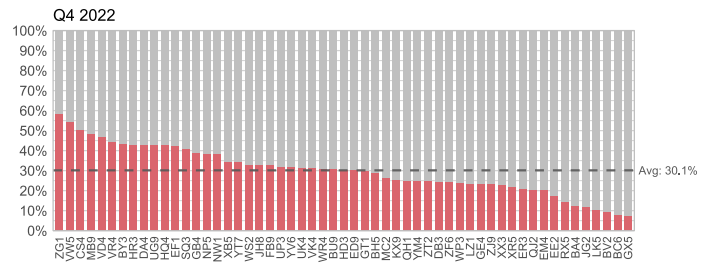
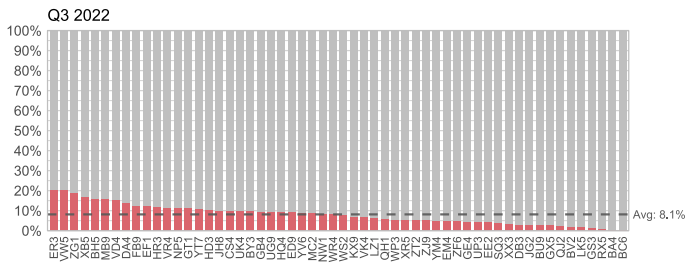
# Past Data

## Influenza (M1)

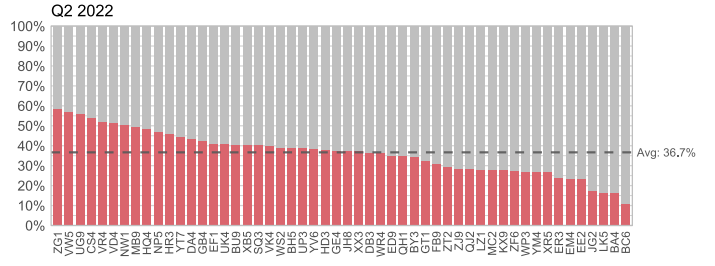
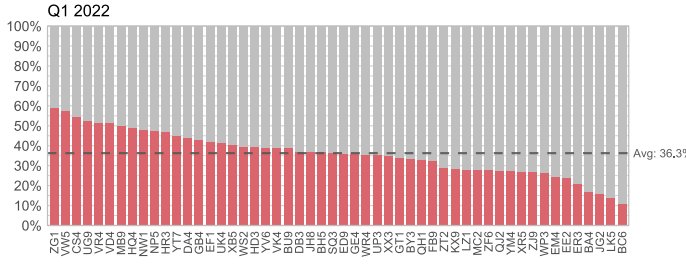
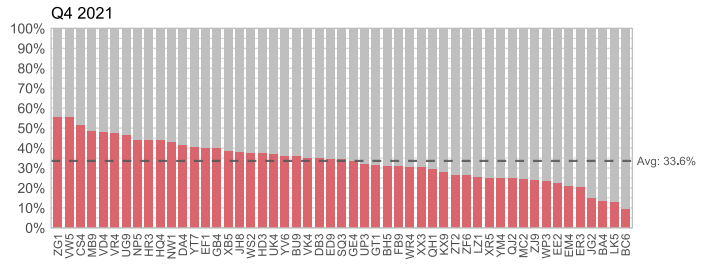
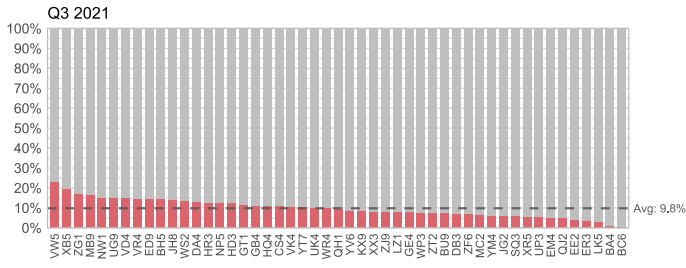
### Measurement Year 2023



### Measurement Year 2022

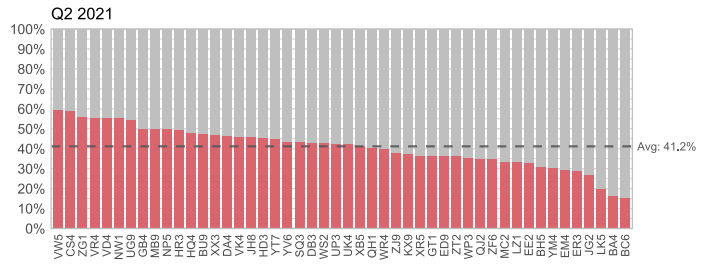
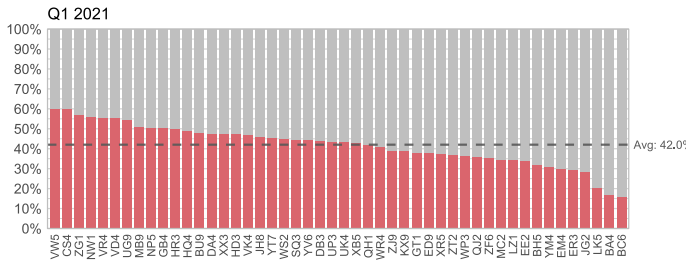
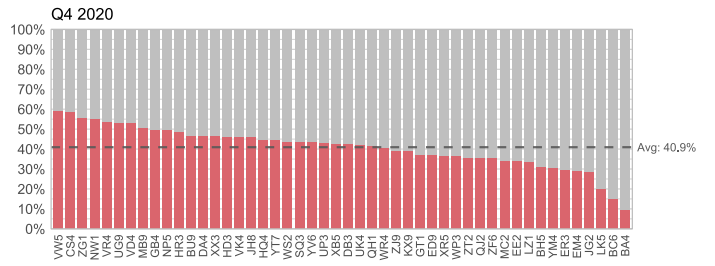
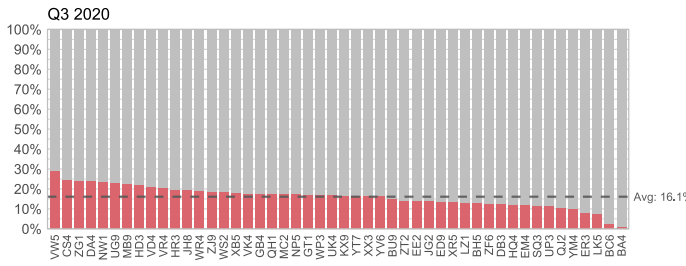


# Measurement Year 2021



## Baseline

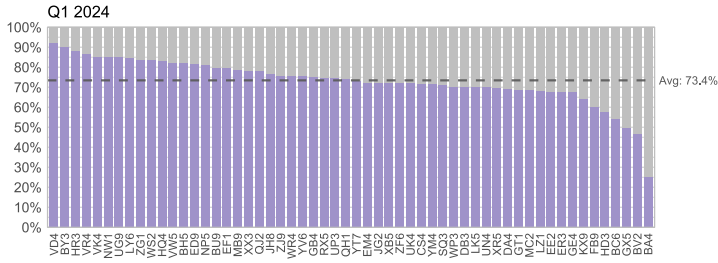
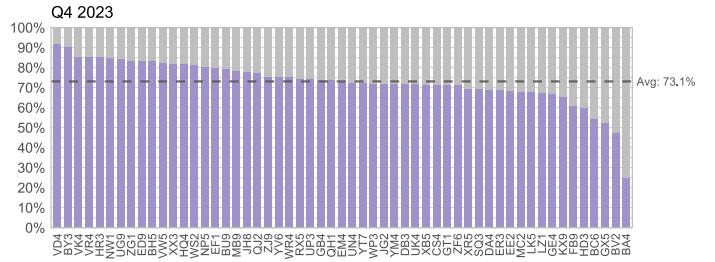
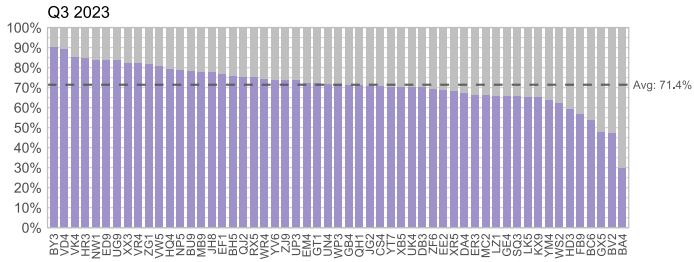
# Measurement Year 2020 (Intra-COVID)



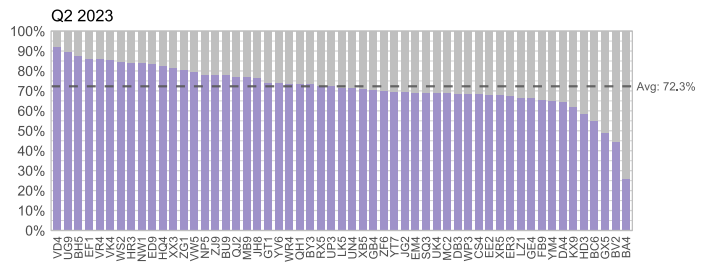
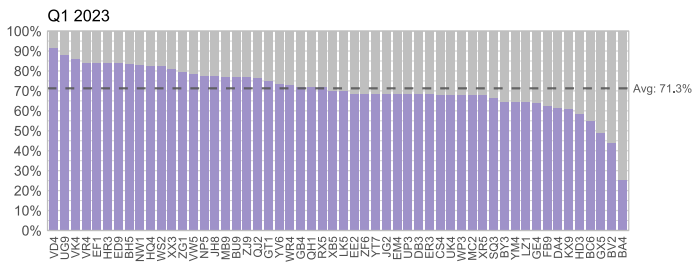
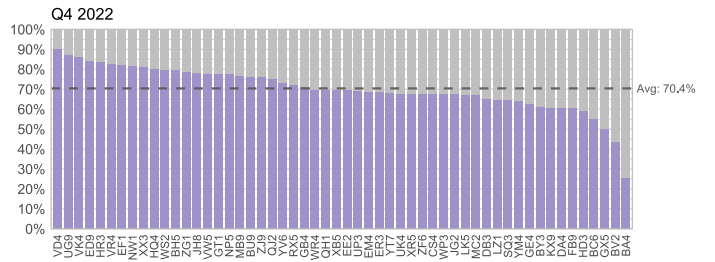
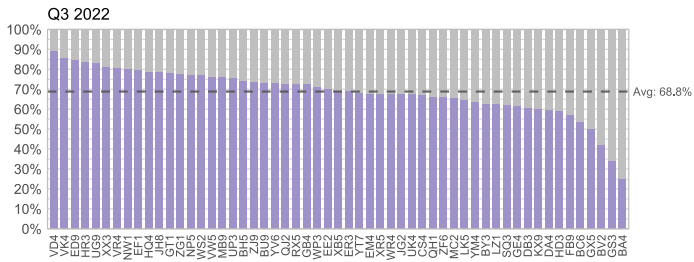


# Pneumococcal (M2)

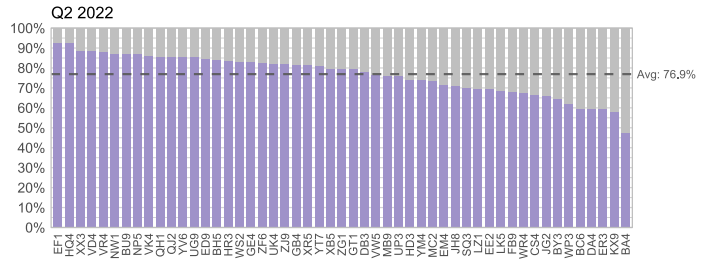
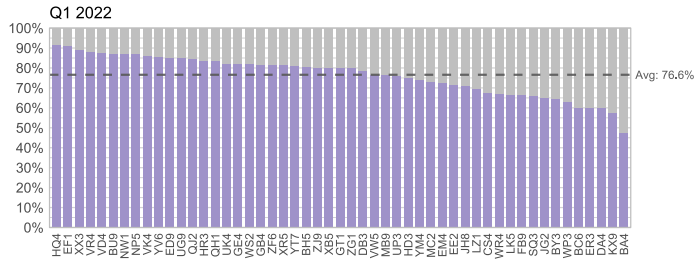
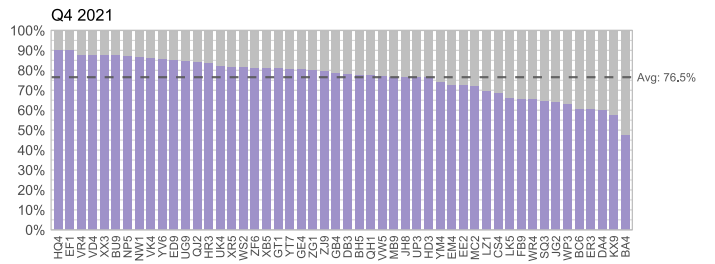
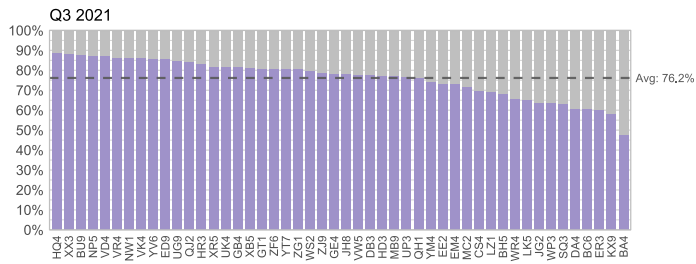
## Measurement Year 2023



## Measurement Year 2022

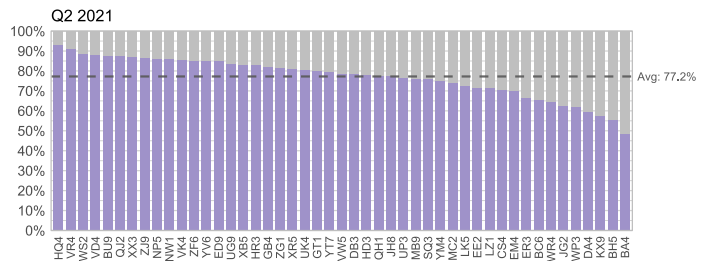
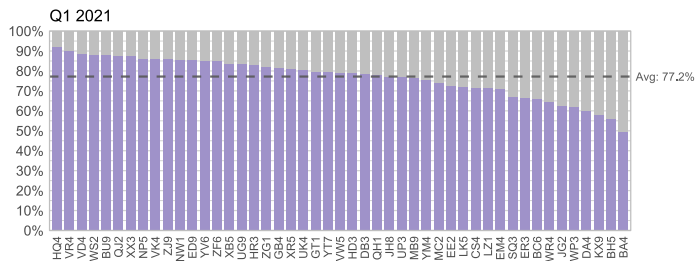
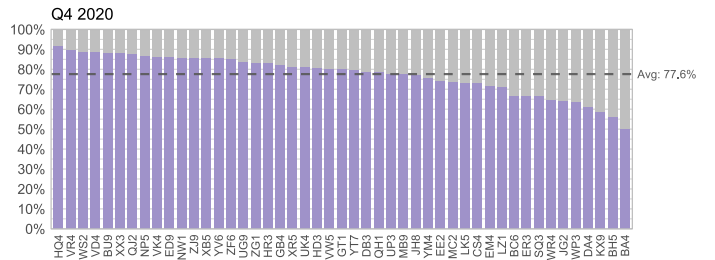
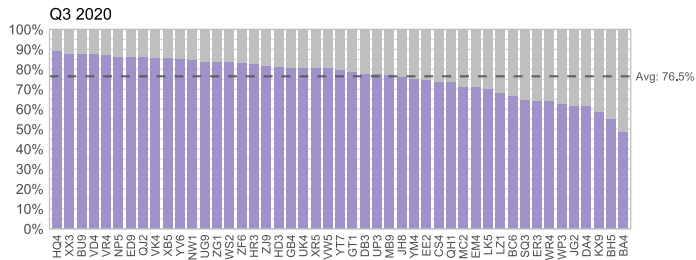


## Measurement Year 2021

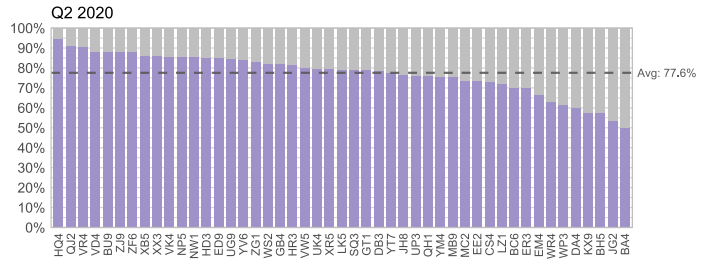
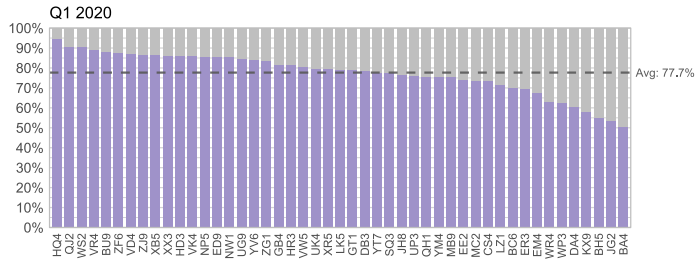
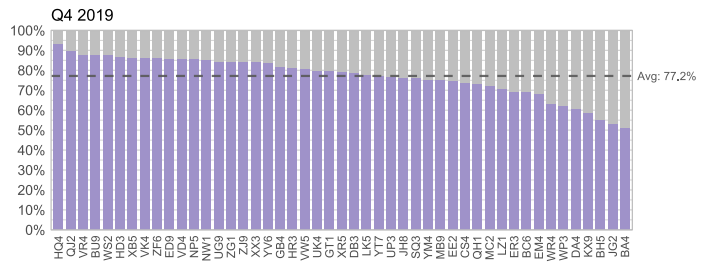
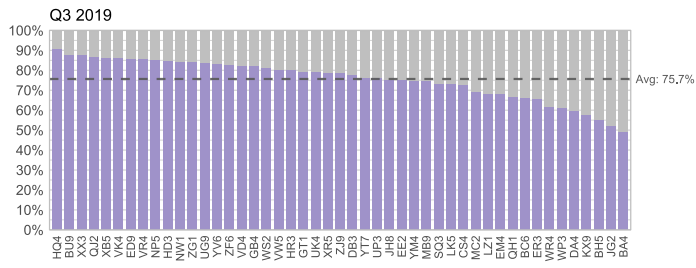


## Baseline

## Measurement Year 2020 (Intra-COVID)

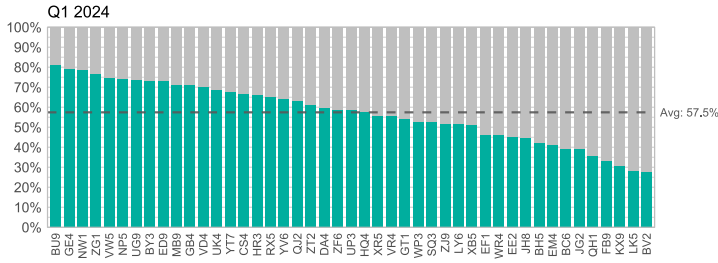
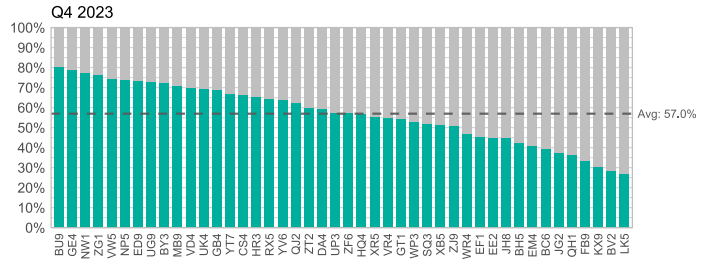
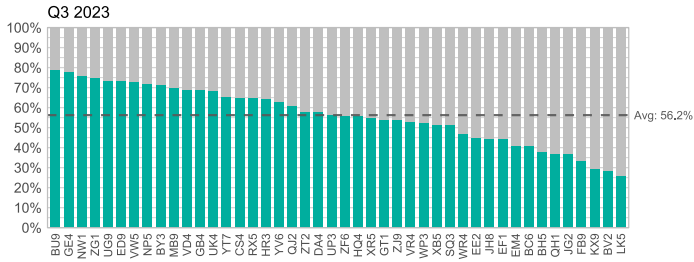


# Measurement Year 2019 (Pre-COVID)

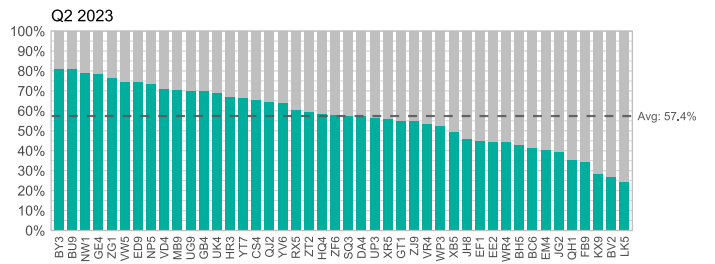
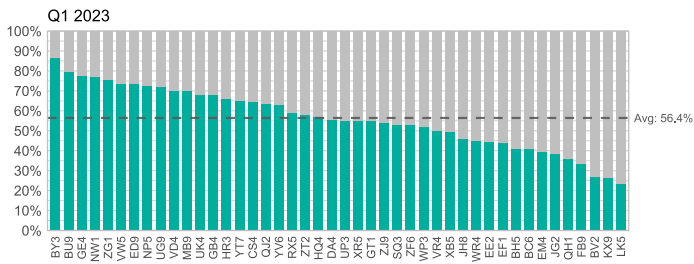
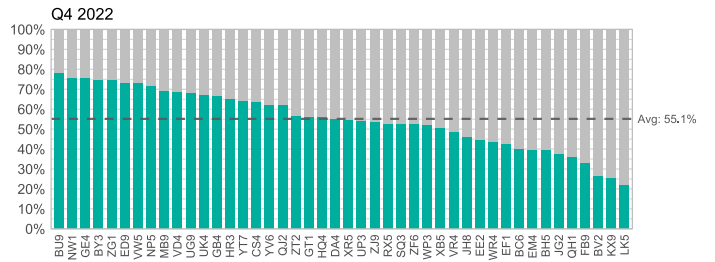
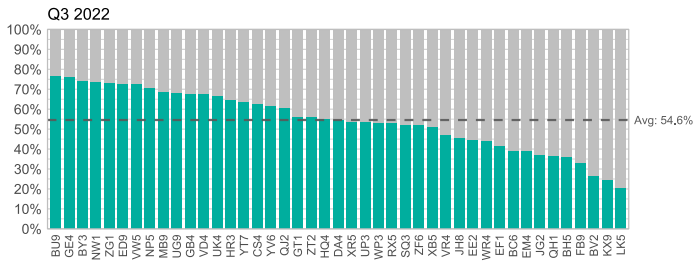


# Td/Tdap (M3)

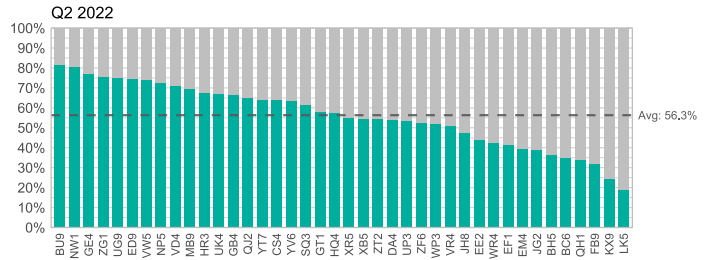
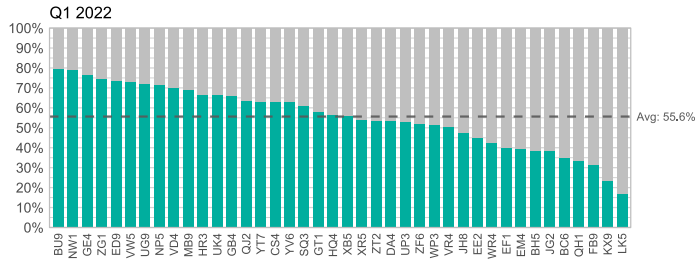
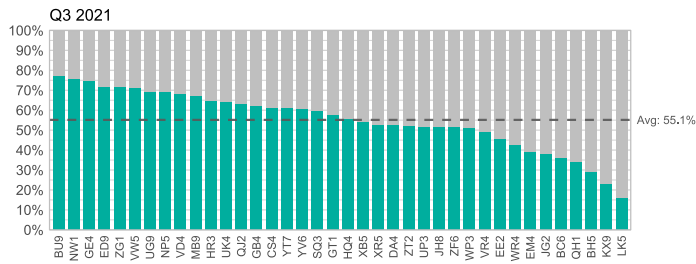
## Measurement Year 2023



## Measurement Year 2022

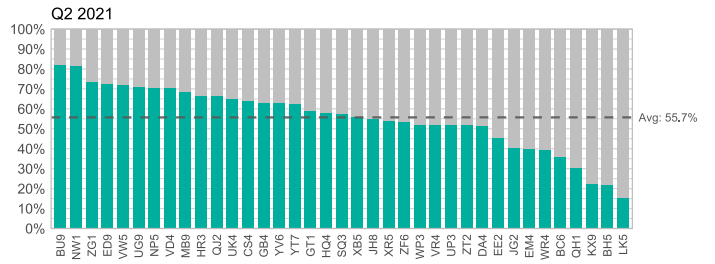
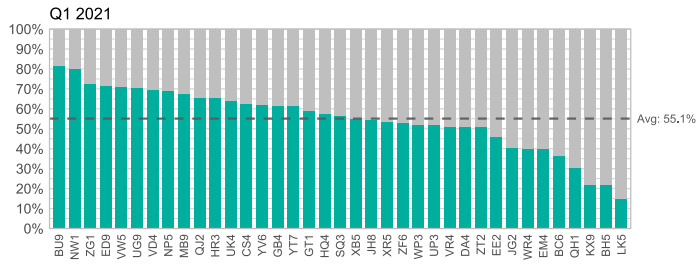
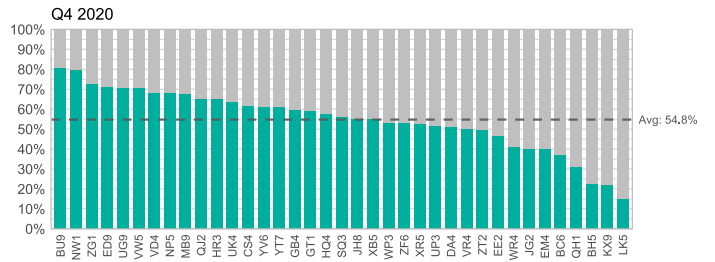
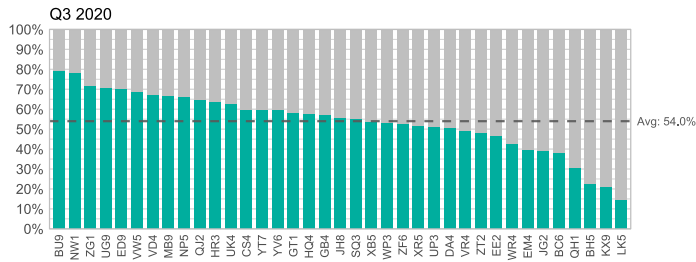


# Measurement Year 2021



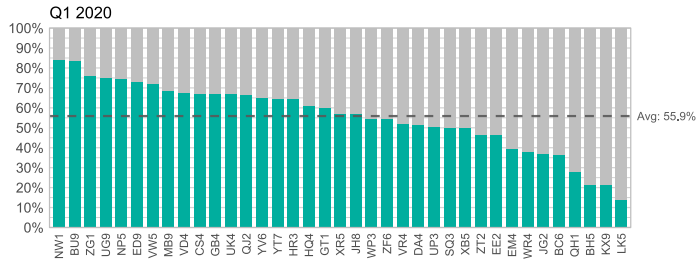
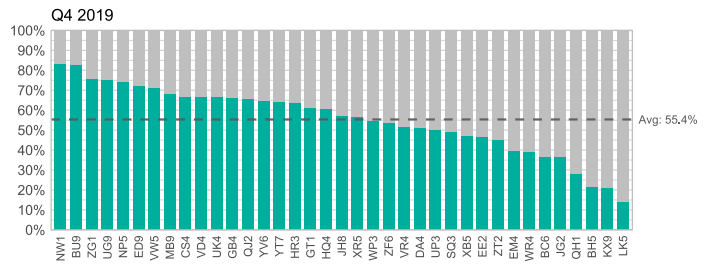
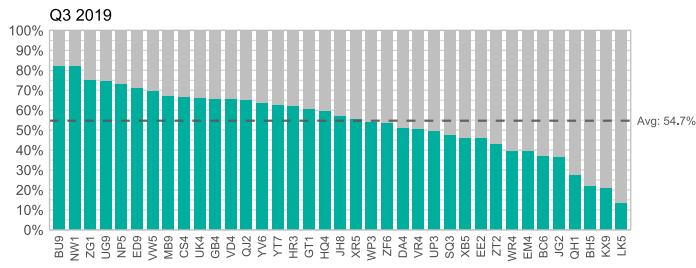
## Baseline

# Measurement Year 2020 (Intra-COVID)



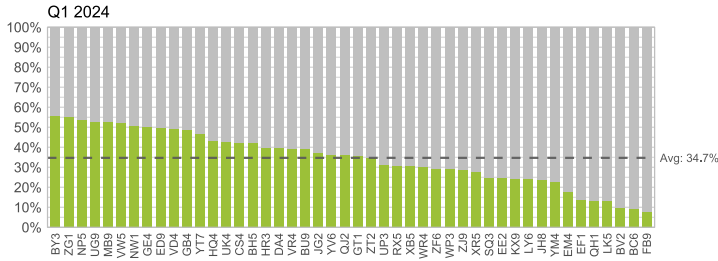
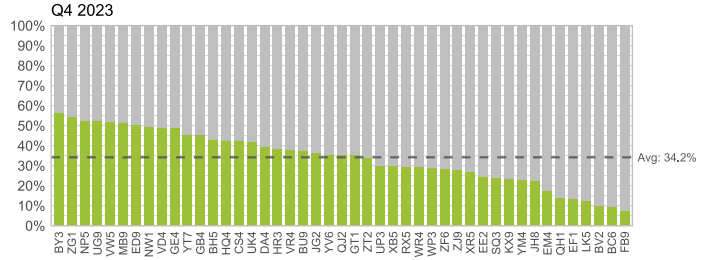
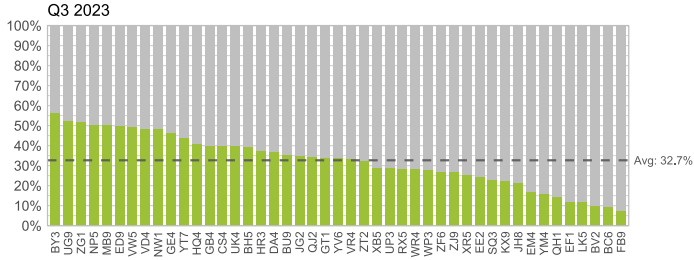


# Measurement Year 2019 (Pre-COVID)

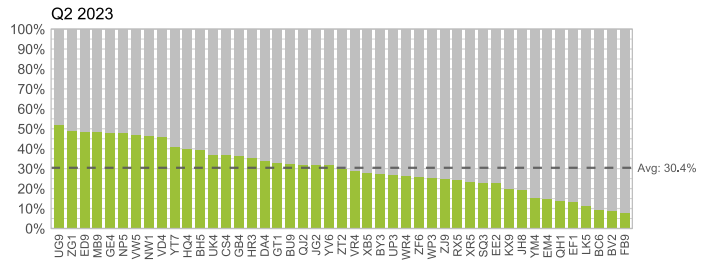
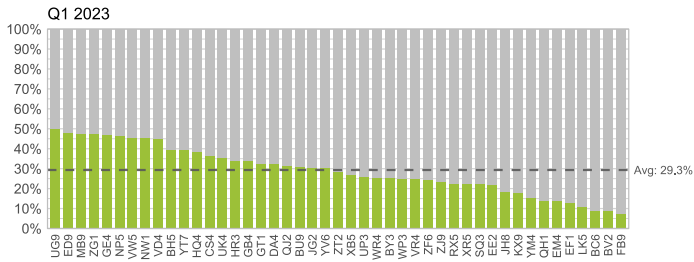
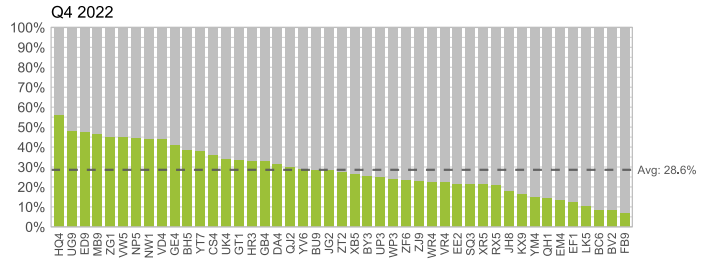
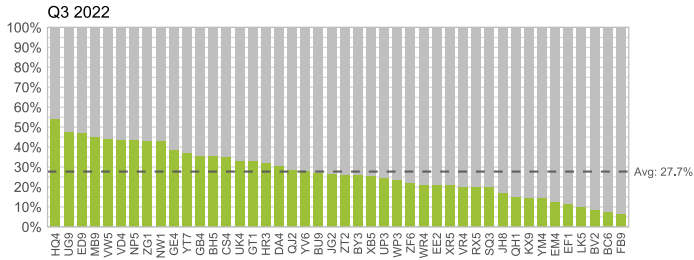


# Zoster (M4)

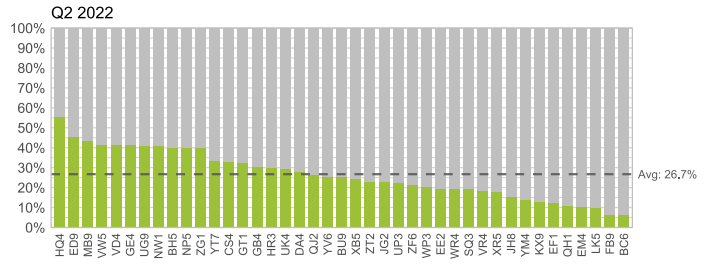
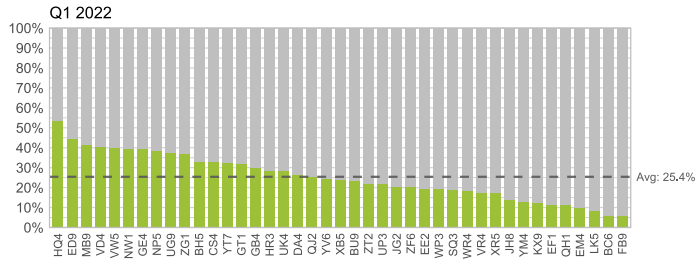
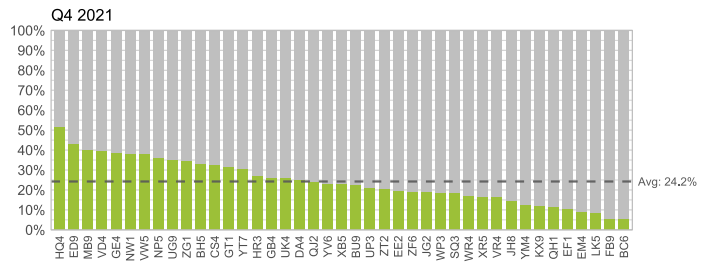
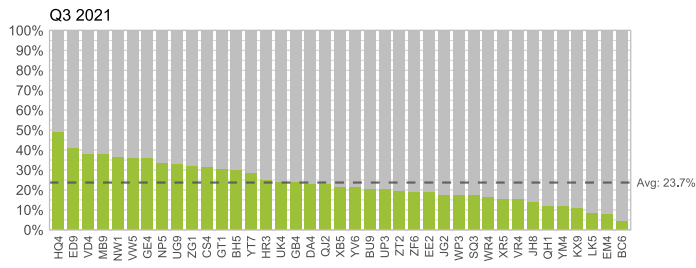
## Measurement Year 2023



## Measurement Year 2022

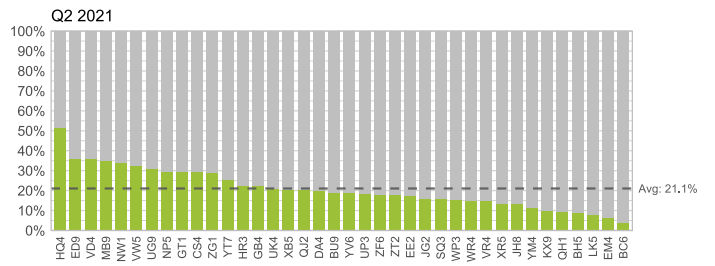
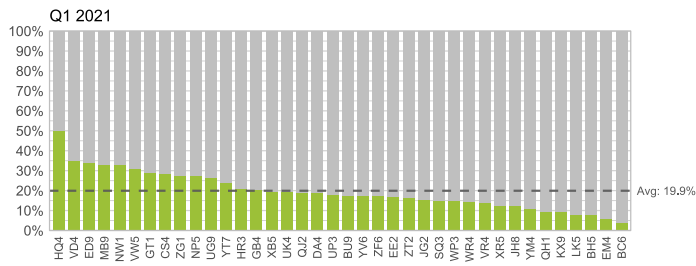
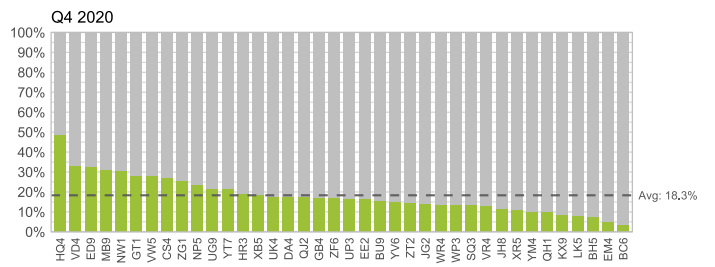
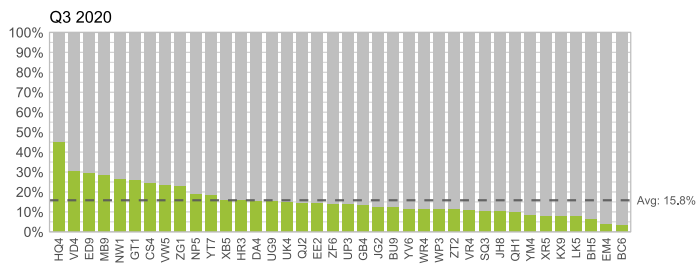


## Measurement Year 2021



## Baseline

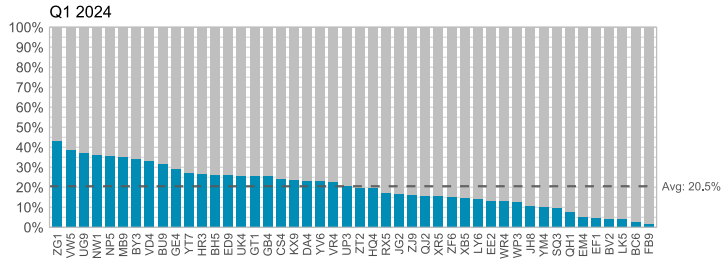
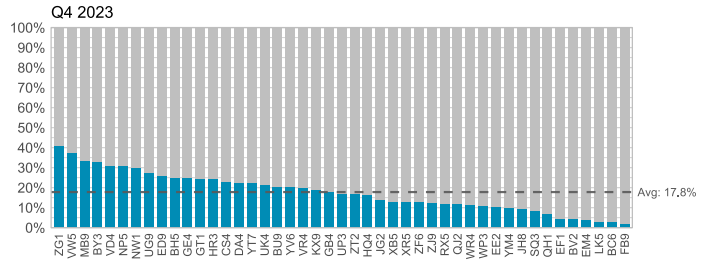
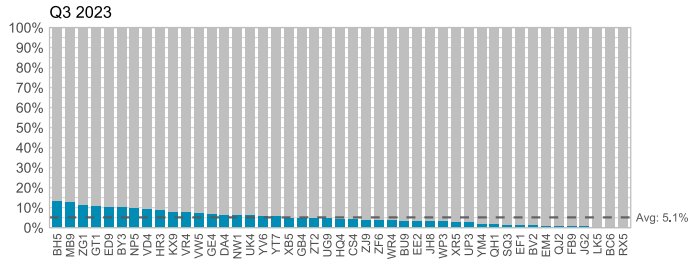
### Measurement Year 2020 (Intra-COVID)



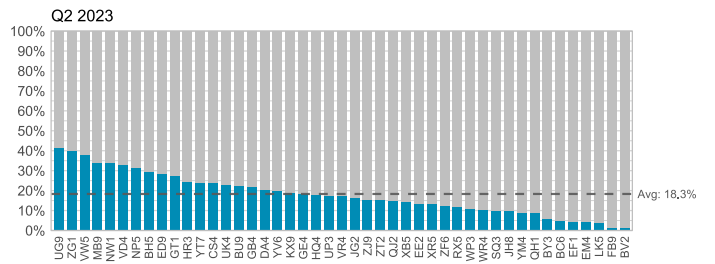
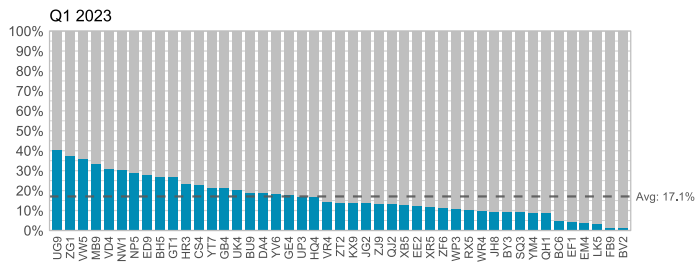
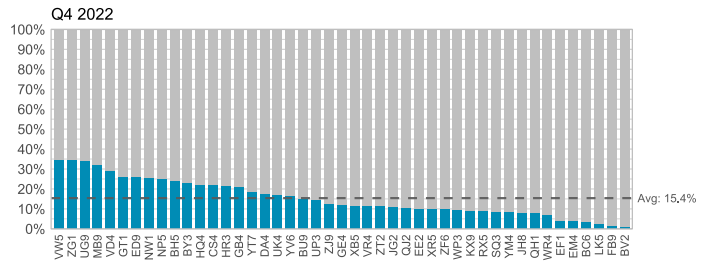
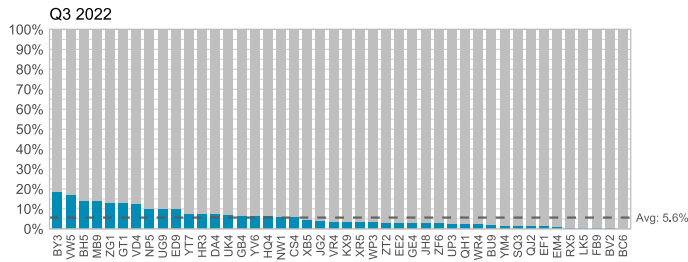


# Bundle (M5)

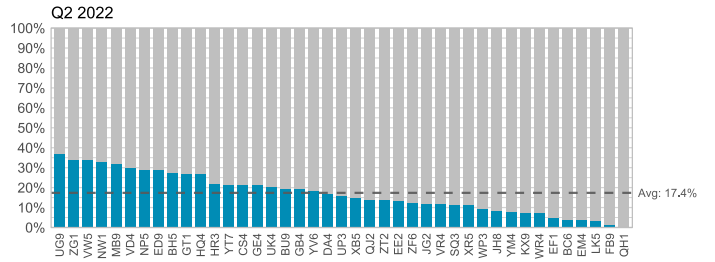
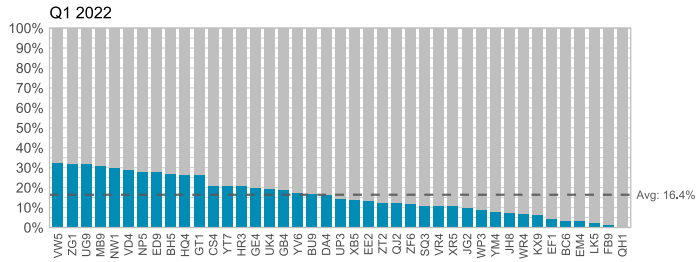
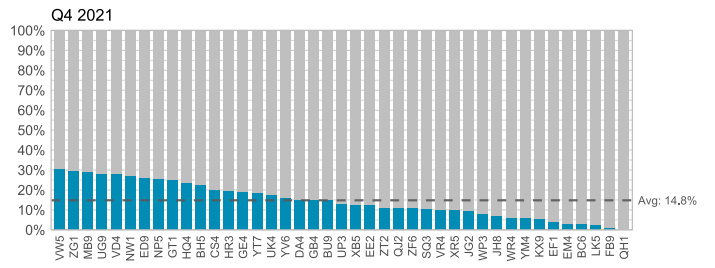
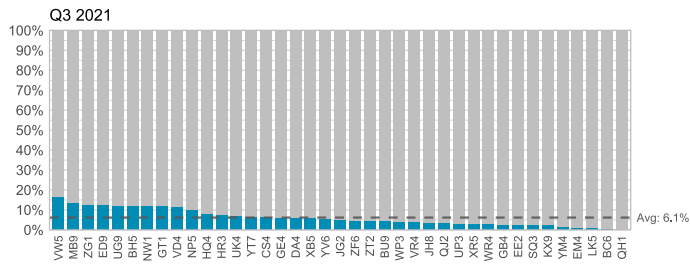
## Measurement Year 2023



## Measurement Year 2022

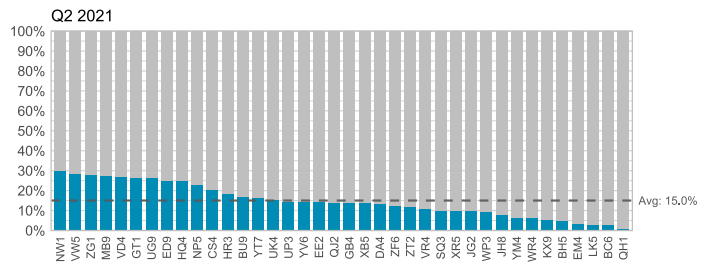
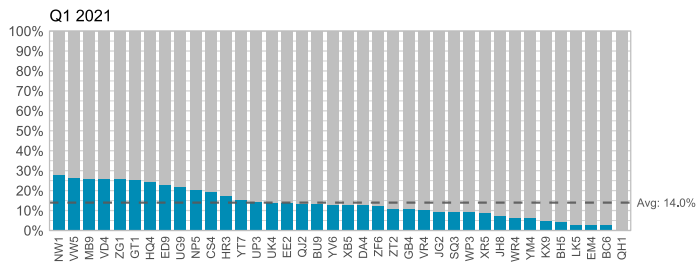
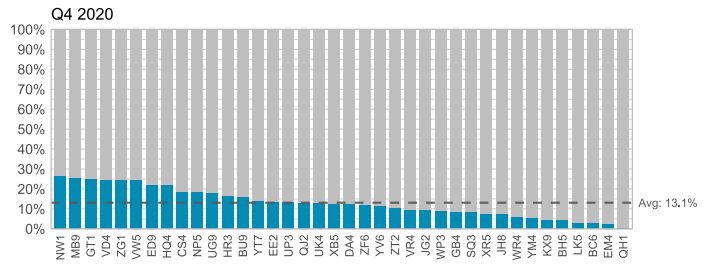
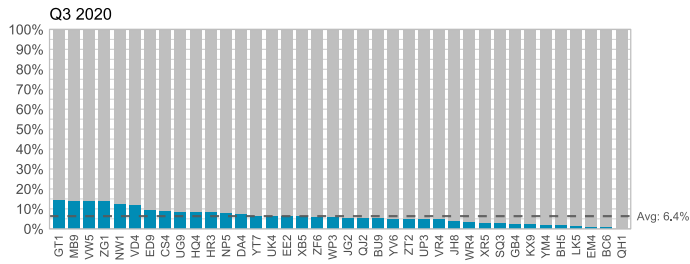


## Measurement Year 2021



## Baseline

## Measurement Year 2020 (Intra-COVID)



# Measurement Year 2019 (Pre-COVID)

